

2013



Precision Products

<http://www.tsict.com>

TSAH0230

IP67 Top Open Camera Housing

Empty housing, IP67, pressure die-casting aluminum alloy construction, suitable camera size (W × H × L): 110 mm × 70 mm × 250 mm



Model	TSAH0230
Power Consumption	<ul style="list-style-type: none"> • Heater 24 V AC: 6 W (250 mA) • Heater 220 V AC: 5.3 W (23 mA) • Heater 12 V DC: 4.2 W (350 mA) • Blower: 1.68 W (140 mA)
LAN Interface	-
Dimensions (W × H × L)	125 mm × 120 mm × 385 mm (4.92 in × 4.72 in × 15.16 in)
View Area (L × W)	60 mm × 80 mm (2.36 in × 3.15 in)
Suitable Camera Size (W × H × L)	<ul style="list-style-type: none"> • 110 mm × 70 mm × 250 mm (4.33 in × 2.76 in × 9.84 in) (empty housing) (TSAH0230) • 110 mm × 70 mm × 210 mm (4.33 in × 2.76 in × 8.27 in) (with heater/blower) (TSAH0231-1, TSAH0231-2, TSAH0231-4, TSAH0233-1, TSAH0233-2, TSAH0233-4)
Heater Control (Optional)	On at 15 °C (59 °F), off at 25 °C (77 °F) (TSAH0231-1, TSAH0231-2, TSAH0231-4, TSAH0233-1, TSAH0233-2, TSAH0233-4)
Blower Control (Optional)	On at 40 °C (104 °F), off at 30 °C (86 °F) (TSAH0233-1, TSAH0233-2, TSAH0233-4)
Environmental Operation Temperature	-20 °C to 50 °C (-4 °F to 122 °F)
Temper Glass Thickness	2 mm (0.08 in)
Bracket (Optional)	Die-casting semi cable management bracket
Weight	1.9 kg (4.19 lb)
Certifications	CE, FCC, RoHS
IR Wave Length	-
IR Distance	-
IR H.V. Angle	-
IR LEDs	-
Expected Lifetime	-
IR Light On/Off	-

*Design and specifications are subject to change without prior notice.

Features

- IP67
- Input voltage: 12 V DC/24 V AC/220 V AC (selectable)
- Built-in heater and blower (optional)
- Adjustable sliding camera tray & sealed cable entry glands
- Fully-cable management system with swivel bracket
- Pressure die-casting aluminum alloy construction

Available Models

Models	Heater	Blower	PoE	Input Voltage
TSAH0230				
TSAH0231-1	+			12 V DC
TSAH0231-2	+			24 V AC
TSAH0231-4	+			220 V AC
TSAH0233-1	+	+		12 V DC
TSAH0233-2	+	+		24 V AC
TSAH0233-4	+	+		220 V AC

Tech Specs

Model	TSAH0230
Type	Outdoor side open camera housing
Weatherproof	IP67
Material/Color	Die-casting aluminum/beige
Input Voltage (Selectable)	<ul style="list-style-type: none"> • 12 V DC (TSAH0231-1, TSAH0233-1) • 24 V AC (TSAH0231-2, TSAH0233-2) • 220 V AC (TSAH0231-4, TSAH0233-4)

TSAH0330

IP66 Cost Effective Camera Housing

Empty housing, IP66, aluminum construction, suitable camera size (W × H × L):
76 mm × 72 mm × 300 mm



Model	TSAH0330
Power Consumption	<ul style="list-style-type: none"> • Heater 24 V AC: 6 W (250 mA) • Heater 220 V AC: 5.3 W (23 mA) • Heater 12 V DC: 4.2 W (350 mA) • Blower: 1.68 W (140 mA)
LAN Interface	-
Dimensions (W × H × L)	118 mm × 107 mm × 410 mm (4.65 in × 4.21 in × 16.14 in)
View Area (L × W)	58 mm × 80 mm (2.28 in × 3.15 in)
Suitable Camera Size (W × H × L)	<ul style="list-style-type: none"> • 76 mm × 72 mm × 300 mm (2.99 in × 2.83 in × 11.81 in) (empty housing) (TSAH0330) • 76 mm × 72 mm × 250 mm (2.99 in × 2.83 in × 9.84 in) (with heater/blower) (TSAH0331-1, TSAH0331-2, TSAH0331-4, TSAH0333-1, TSAH0333-2, TSAH0333-4)
Heater Control	On at 15 °C (59 °F), off at 25 °C (77 °F) (optional) (TSAH0331-1, TSAH0331-2, TSAH0331-4, TSAH0333-1, TSAH0333-2, TSAH0333-4)
Blower Control	On at 40 °C (104 °F), off at 30 °C (86 °F) (optional) (TSAH0333-1, TSAH0333-2, TSAH0333-4)
Environmental Operation Temperature	-20 °C to 50 °C (-4 °F to 122 °F)
Temper Glass Thickness	2 mm (0.08 in)
Bracket (Optional)	Die-casting semi cable management bracket, TSAM0280 or standard bracket, TSAM0180 (optional)
Weight	1.7 kg (3.75 lb)
Certifications	CE, FCC, RoHS
IR Wave Length	-
IR Distance	-
IR H.V. Angle	-
IR LEDs	-
Expected Lifetime	-
IR Light On/Off	-

*Design and specifications are subject to change without prior notice.

Features

- IP66
- Back open
- Input voltage: 12 V DC/24 V AC/220 V AC (selectable)
- Built-in heater and blower (optional)
- Adjustable sliding camera tray & sealed cable entry glands
- Aluminum construction

Available Models

Models	Heater	Blower	PoE	Input Voltage
TSAH0330				
TSAH0331-1	+			12 V DC
TSAH0331-2	+			24 V AC
TSAH0331-4	+			220 V AC
TSAH0333-1	+	+		12 V DC
TSAH0333-2	+	+		24 V AC
TSAH0333-4	+	+		220 V AC

Tech Specs

Model	TSAH0330
Type	Outdoor back open camera housing
Weatherproof	IP66
Material/Color	Extruded Aluminum/beige and silver-grey
Input Voltage (Selectable)	<ul style="list-style-type: none"> • 12 V DC (TSAH0331-1, TSAH0333-1) • 24 V AC (TSAH0331-2, TSAH0333-2) • 220 V AC (TSAH0331-4, TSAH0333-4)

TSAH0430

IP66 Side Open Polycarbonate Camera Housing

Empty housing, IP66, polycarbonate construction, suitable camera size (W × H × L): 95 mm × 80 mm × 250 mm



Features

- IP66
- PoE upgradable
- Input power voltage: 12 V DC/24 V AC/220 V AC (selectable) or PoE (48 V DC in, 12 V DC/2 A out) upgradable
- Built-in heater and blower (optional)
- Adjustable sliding camera tray & sealed cable entry glands
- Fully-cable management system with swivel bracket
- Polycarbonate construction

Available Models

Models	Heater	Blower	PoE	Input Voltage
TSAH0430				
TSAH0431-1	+			12 V DC
TSAH0431-2	+			24 V AC
TSAH0431-4	+			220 V AC
TSAH0433-1	+	+		12 V DC
TSAH0433-2	+	+		24 V AC
TSAH0433-4	+	+		220 V AC
TSAH0430-5			+	
TSAH0431-5	+		+	
TSAH0433-5	+	+	+	

Tech Specs

Model	TSAH0430
Type	Outdoor side open camera housing

Model	TSAH0430
Weatherproof	IP66
Material/Color	Polycarbonate/beige
Input Voltage	<ul style="list-style-type: none"> • 12 V DC (TSAH0431-1, TSAH0433-1) • 24 V AC (TSAH0431-2, TSAH0433-2) • 220 V AC (TSAH0431-4, TSAH0433-4) • PoE (48 V DC in, 12 V DC/2 A out) upgradable (TSAH0430-5, TSAH0431-5, TSAH0433-5)
Power Consumption	<ul style="list-style-type: none"> • Heater 24 V AC: 6 W (250 mA) • Heater 220 V AC: 5.3 W (23 mA) • Heater 12 V DC: 4.2 W (350 mA) • Blower: 1.68 W (140 mA)
LAN Interface	RJ-45 × 2 (PoE in/data output) for PoE model (TSAH0430-5, TSAH0431-5, TSAH0433-5)
Dimensions (W × H × L)	151 mm × 145 mm × 390 mm (5.94 in × 5.71 in × 15.35 in)
View Area (L × W)	74 mm × 74 mm (2.91 in × 2.91 in)
Suitable Camera Size (W × H × L)	<ul style="list-style-type: none"> • 95 mm × 80 mm × 250 mm (3.74 in × 3.15 in × 9.84 in) (empty housing and with heater/blower) (TSAH0430, TSAH0431-1, TSAH0431-2, TSAH0431-4, TSAH0433-1, TSAH0433-2, TSAH0433-4) • 95 mm × 80 mm × 215 mm (3.74 in × 3.15 in × 8.46 in) (with heater/blower/PoE module) (TSAH0430-5, TSAH0431-5, TSAH0433-5)
Heater Control	On at 15 °C (59 °F), off at 25 °C (77 °F) (optional) (TSAH0431-1, TSAH0431-2, TSAH0431-4, TSAH0433-1, TSAH0433-2, TSAH0433-4, TSAH0431-5, TSAH0433-5)
Blower Control	On at 40 °C (104 °F), off at 30 °C (86 °F) (optional) (TSAH0433-1, TSAH0433-2, TSAH0433-4, TSAH0433-5)
Environmental Operation Temperature	-20 °C to 50 °C (-4 °F to 122 °F)
Temper Glass Thickness	2 mm (0.08 in)
Bracket (Optional)	Die-casting cable management bracket, TSAM0265 (optional)
Weight	1.9 kg (4.19 lb)
Certifications	CE, FCC, RoHS
IR Wave Length	-
IR Distance	-
IR H.V. Angle	-
IR LEDs	-
Expected Lifetime	-
IR Light On/Off	-

*Design and specifications are subject to change without prior notice.

TSAH0530

IP66/67 Die-casting Side Open Camera Housing

Empty housing, IP66/67, pressure die-casting aluminum alloy construction, suitable camera size (W × H × L): 100 mm × 70 mm × 350 mm



Features

- IP66/67
- PoE upgradable
- Input voltage: 12 V DC/24 V AC/220 V AC (selectable)
- Built-in heater and blower (optional)
- Adjustable sliding camera tray & sealed cable entry glands
- Fully-cable management system with swivel bracket
- Die-casting aluminum construction

Available Models

Models	Heater	Blower	PoE	Input Voltage
TSAH0530				
TSAH0531-1	+			12 V DC
TSAH0531-2	+			24 V AC
TSAH0531-4	+			220 V AC
TSAH0533-1	+	+		12 V DC
TSAH0533-2	+	+		24 V AC
TSAH0533-4	+	+		220 V AC
TSAH0530-5			+	
TSAH0531-5	+		+	
TSAH0533-5	+	+	+	
TSAH0533-9	+	+	+	

Tech Specs

Model	TSAH0530
Type	Outdoor side open camera housing

Model	TSAH0530
Weatherproof	IP66/67
Material/Color	Die-casting aluminum/beige
Input Voltage	<ul style="list-style-type: none"> • 12 V DC (TSAH0531-1, TSAH0533-1) • 24 V AC (TSAH0531-2, TSAH0533-2) • 220 V AC (TSAH0531-4, TSAH0533-4) • PoE (48 V DC in, 12 V DC/2 A out) upgradable (TSAH0530-5, TSAH0531-5, TSAH0533-5) • PoE (48 V DC in) upgradable (TSAH0533-9)
Power Consumption	<ul style="list-style-type: none"> • Heater 24 V AC: 6 W (250 mA) • Heater 220 V AC: 5.3 W (23 mA) • Heater 12 V DC: 4.2 W (350 mA) • Blower: 1.68 W (140 mA)
LAN Interface	<ul style="list-style-type: none"> • RJ-45 × 2 (PoE in/data output) for PoE model (TSAH0530-5, TSAH0531-5, TSAH0533-5) • RJ-45 × 2 (PoE in/PoE output) (TSAH0533-9)
Dimensions (W × H × L)	155 mm × 110 mm × 400 mm (6.10 in × 4.33 in × 15.75 in)
View Area (L × W)	58 mm × 80 mm (2.28 in × 3.15 in)
Suitable Camera Size (W × H × L)	<ul style="list-style-type: none"> • 100 mm × 70 mm × 350 mm (3.94 in × 2.76 in × 13.78 in) (empty housing) (TSAH0530) • 100 mm × 70 mm × 310 mm (3.94 in × 2.76 in × 12.20 in) (with heater/blower) (TSAH0531-1, TSAH0531-2, TSAH0531-4, TSAH0533-1, TSAH0533-2, TSAH0533-4, TSAH0533-9) • 100 mm × 70 mm × 200 mm (3.94 in × 2.76 in × 7.87 in) (with heater/blower/PoE module) (TSAH0530-5, TSAH0531-5, TSAH0533-5)
Heater Control	On at 15 °C (59 °F), off at 25 °C (77 °F) (optional) (TSAH0531-1, TSAH0531-2, TSAH0531-4, TSAH0533-1, TSAH0533-2, TSAH0533-4, TSAH0531-5, TSAH0533-5, TSAH0533-9)
Blower Control	On at 40 °C (104 °F), off at 30 °C (86 °F) (optional) (TSAH0533-1, TSAH0533-2, TSAH0533-4, TSAH0533-5, TSAH0533-9)
Environmental Operation Temperature	-20 °C to 50 °C (-4 °F to 122 °F)
Temper Glass Thickness	2 mm (0.08 in)
Bracket (Optional)	Die-casting cable management bracket, TSAM0265 (optional)
Weight	2.5 kg (5.51 lb)
Certifications	CE, FCC, RoHS
IR Wave Length	-
IR Distance	-
IR H.V. Angle	-
IR LEDs	-
Expected Lifetime	-
IR Light On/Off	-

*Design and specifications are subject to change without prior notice.

TSAH0630

IP68 Die-casting Side Open Camera Housing

Side open camera empty housing, IP68, pressure die-casting aluminum alloy construction, suitable camera size (W × H × L): 100 mm × 65 mm × 300 mm



Features

- IP68 rating
- Designed for indoor and outdoor applications
- Input voltage: 12 V DC/24 V AC/220 V AC (selectable) or PoE (48 V DC in, 12 V DC/2 A out) upgradable
- Built-in heater and blower (optional)
- Adjustable sliding camera tray & sealed cable entry glands
- Fully-cable management system with swivel bracket
- Die-casting aluminum construction
- Lightweight for easy wall mounting
- High impact resistance
- Side opening
- Easy access for service and installation
- Withstand severe environment conditions
- Bundled cable-management bracket

Available Models

Models	Heater	Blower	PoE	Input Voltage
TSAH0630				
TSAH0631-1	+			12 V DC
TSAH0631-2	+			24 V AC
TSAH0631-4	+			220 V AC
TSAH0633-1	+	+		12 V DC
TSAH0633-2	+	+		24 V AC
TSAH0633-4	+	+		220 V AC
TSAH0630-5			+	
TSAH0631-5	+		+	
TSAH0633-5	+	+	+	

Tech Specs

Model	TSAH0630
Type	Outdoor side open camera housing
Weatherproof	IP68
Material/Color	Die-casting aluminum/beige
Input Voltage	<ul style="list-style-type: none"> • 12 V DC (TSAH0631-1, TSAH0633-1) • 24 V AC (TSAH0631-2, TSAH0633-2) • 220 V AC (TSAH0631-4, TSAH0633-4) • PoE (48 V DC in, 12 V DC/2 A out) upgradable (TSAH0630-5, TSAH0631-5, TSAH0633-5)
Power Consumption	<ul style="list-style-type: none"> • Heater 24 V AC: 6 W (250 mA) • Heater 220 V AC: 5.3 W (23 mA) • Heater 12 V DC: 4.2 W (350 mA) • Blower: 1.68 W (140 mA)
LAN Interface	RJ-45 × 2 (PoE in/data output) for PoE model (TSAH0630-5, TSAH0631-5, TSAH0633-5)
Dimensions (W × H × L)	145 mm × 109 mm × 406 mm (5.71 in × 4.29 in × 15.98 in)
View Area (L × W)	92 mm × 76 mm (3.62 in × 2.99 in)
Suitable Camera Size (W × H × L)	<ul style="list-style-type: none"> • 100 mm × 65 mm × 300 mm (3.94 in × 2.56 in × 11.81 in) (empty housing) (TSAH0630) • 100 mm × 65 mm × 220 mm (3.94 in × 2.56 in × 8.66 in) (with heater/blower) (TSAH0631-1, TSAH0631-2, TSAH0631-4, TSAH0633-1, TSAH0633-2, TSAH0633-4) • 100 mm × 65 mm × 200 mm (3.94 in × 2.56 in × 7.87 in) (with heater/blower/PoE module) (TSAH0630-5, TSAH0631-5, TSAH0633-5)
Heater Control	On at 15 °C (59 °F), off at 25 °C (77 °F) (optional) (TSAH0631-1, TSAH0631-2, TSAH0631-4, TSAH0633-1, TSAH0633-2, TSAH0633-4, TSAH0631-5, TSAH0633-5)
Blower Control	On at 40 °C (104 °F), off at 30 °C (86 °F) (optional) (TSAH0633-1, TSAH0633-2, TSAH0633-4, TSAH0633-5)
Environmental Operation Temperature	-40 °C to 50 °C (-40 °F to 122 °F)
Temper Glass Thickness	2 mm (0.08 in)
Bracket (Optional)	Die-casting cable management bracket, TSAM0465 or TSAM0165 (optional)
Weight	3.6 kg (7.94 lb)
Certifications	CE, FCC, RoHS
IR Wave Length	-
IR Distance	-
IR H.V. Angle	-
IR LEDs	-
Expected Lifetime	-
IR Light On/Off	-

*Design and specifications are subject to change without prior notice.

TSAH0730

IP66 Extruded Side Open Camera Housing

Empty side open camera housing, IP66, extruded aluminum construction, built-in sun-shield, suitable camera size (W × H × L): 95 mm × 70 mm × 260 mm



Model	TSAH0730
Power Consumption	<ul style="list-style-type: none"> • 220 V AC (TSAH0731-4, TSAH0733-4) • Heater 24 V AC: 6 W (250 mA) • Heater 220 V AC: 5.3 W (23 mA) • Heater 12 V DC: 4.2 W (350 mA) • Blower: 1.68 W (140 mA)
LAN Interface	-
Dimensions (W × H × L)	147 mm × 115 mm × 377 mm (3.74 in × 2.76 in × 7.87 in)
View Area (L × W)	75 mm × 75 mm (2.95 in × 2.95 in)
Suitable Camera Size (W × H × L)	<ul style="list-style-type: none"> • 95 mm × 70 mm × 260 mm (3.74 in × 2.76 in × 10.24 in) (empty housing) (TSAH0730) • 95 mm × 70 mm × 200 mm (3.74 in × 2.76 in × 7.87 in) (with heater/blower) (TSAH0731-1, TSAH0731-2, TSAH0731-4, TSAH0733-1, TSAH0733-2, TSAH0733-4)
Heater Control	On at 15 °C (59 °F), off at 25 °C (77 °F) (optional) (TSAH0731-1, TSAH0731-2, TSAH0731-4, TSAH0733-1, TSAH0733-2, TSAH0733-4)
Blower Control	On at 40 °C (104 °F), off at 30 °C (86 °F) (optional) (TSAH0733-1, TSAH0733-2, TSAH0733-4)
Environmental Operation Temperature	-20 °C to 50 °C (-4 °F to 122 °F)
Temper Glass Thickness	2 mm (0.08 in)
Bracket (Optional)	Die-casting semi cable management bracket, TSAM0280 or standard bracket, TSAM0180 (optional)
Weight	2.5 kg (5.51 lb)
Certifications	CE, FCC, RoHS
IR Wave Length	-
IR Distance	-
IR H.V. Angle	-
IR LEDs	-
Expected Lifetime	-
IR Light On/Off	-

Features

- IP66
- Input voltage: 12 V DC/24 V AC/220 V AC (selectable)
- Built-in heater and blower (optional)
- Adjustable sliding camera tray & sealed cable entry glands
- Fully-cable management system with swivel bracket
- Extruded aluminum construction

Available Models

Models	Heater	Blower	PoE	Input Voltage
TSAH0730				
TSAH0731-1	+			12 V DC
TSAH0731-2	+			24 V AC
TSAH0731-4	+			220 V AC
TSAH0733-1	+	+		12 V DC
TSAH0733-2	+	+		24 V AC
TSAH0733-4	+	+		220 V AC

Tech Specs

Model	TSAH0730
Type	Outdoor side open camera housing
Weatherproof	IP66
Material/Color	Extruded Aluminum/beige and white epoxy powder coating
Input Voltage (Selectable)	<ul style="list-style-type: none"> • 12 V DC (TSAH0731-1, TSAH0733-1) • 24 V AC (TSAH0731-2, TSAH0733-2)

*Design and specifications are subject to change without prior notice.

TSAH0830

IP66 Extruded Side Open Camera Housing

Empty side open camera housing, IP66, extruded aluminum construction, suitable camera size (W × H × L): 100 mm × 75 mm × 260 mm



Model	TSAH0830
	<ul style="list-style-type: none"> 220 V AC (TSAH0831-4, TSAH0833-4)
Power Consumption	<ul style="list-style-type: none"> Heater 24 V AC: 6 W (250 mA) Heater 220 V AC: 5.3 W (23 mA) Heater 12 V DC: 4.2 W (350 mA) Blower: 1.68 W (140 mA)
LAN Interface	-
Dimensions (W × H × L)	138 mm × 117 mm × 375 mm (5.43 in × 4.60 in × 14.76 in)
View Area (L × W)	75 mm × 75 mm (2.95 in × 2.95 in)
Suitable Camera Size (W × H × L)	<ul style="list-style-type: none"> 100 mm × 75 mm × 260 mm (3.94 in × 2.95 in × 10.24 in) (empty housing) (TSAH0830) 100 mm × 65 mm × 220 mm (3.94 in × 2.56 in × 8.66 in) (with heater/blower) (TSAH0831-1, TSAH0831-2, TSAH0831-4, TSAH0833-1, TSAH0833-2, TSAH0833-4)
Heater Control	On at 15 °C (59 °F), off at 25 °C (77 °F) (optional) (TSAH0831-1, TSAH0831-2, TSAH0831-4, TSAH0833-1, TSAH0833-2, TSAH0833-4)
Blower Control	On at 40 °C (104 °F), off at 30 °C (86 °F) (optional) (TSAH0833-1, TSAH0833-2, TSAH0833-4)
Environmental Operation Temperature	-20 °C to 50 °C (-4 °F to 122 °F)
Temper Glass Thickness	2 mm (0.08 in)
Bracket (Optional)	Die-casting semi cable management bracket, TSAM0265, TSAM0280 or standard bracket, TSAM0180 (optional)
Weight	1.5 kg (3.31 lb)
Certifications	CE, FCC, RoHS
IR Wave Length	-
IR Distance	-
IR H.V. Angle	-
IR LEDs	-
Expected Lifetime	-
IR Light On/Off	-

Features

- IP66
- Input power voltage: 12 V DC/24 V AC/220 V AC (selectable)
- Built-in heater and blower (optional)
- Adjustable sliding camera tray & sealed cable entry glands
- Fully-cable management system with swivel bracket
- Extruded aluminum construction

Available Models

Models	Heater	Blower	PoE	Input Voltage
TSAH0830				
TSAH0831-1	+			12 V DC
TSAH0831-2	+			24 V AC
TSAH0831-4	+			220 V AC
TSAH0833-1	+	+		12 V DC
TSAH0833-2	+	+		24 V AC
TSAH0833-4	+	+		220 V AC

Tech Specs

Model	TSAH0830
Type	Outdoor side open camera housing
Weatherproof	IP66
Material/Color	Extruded Aluminum/beige and white epoxy powder coating
Input Voltage (Selectable)	<ul style="list-style-type: none"> 12 V DC (TSAH0831-1, TSAH0833-1) 24 V AC (TSAH0831-2, TSAH0833-2)

*Design and specifications are subject to change without prior notice.

TSAH0930

IP66 Cost Effective Big Size Camera Housing

Empty housing, IP66, Aluminum construction, suitable camera size (W × H × L): 105 mm × 100 mm × 320 mm



Features

- IP66
- Input power voltage: 12 V DC/24 V AC/220 V AC (selectable)
- Built-in heater, blower and PoE (optional)
- Adjustable sliding camera tray and sealed cable entry glands
- Aluminum construction

Available Models

Models	Heater	Blower	PoE	Input Voltage
TSAH0930				
TSAH0931-1	+			12 V DC
TSAH0931-2	+			24 V AC
TSAH0931-4	+			220 V AC
TSAH0933-1	+	+		12 V DC
TSAH0933-2	+	+		24 V AC
TSAH0933-4	+	+		220 V AC
TSAH0930-5			+	
TSAH0931-5	+		+	
TSAH0933-5	+	+	+	

Tech Specs

Model	TSAH0930
Type	Outdoor back open camera housing
Weatherproof	IP66
Material/Color	Extruded Aluminum/beige and silver-grey
Input Voltage	<ul style="list-style-type: none"> • 12 V DC (TSAH0931-1, TSAH0933-1)

Model	TSAH0930
	<ul style="list-style-type: none"> • 24 V AC (TSAH0931-2, TSAH0933-2) • 220 V AC (TSAH0931-4, TSAH0933-4) • PoE (48 V DC in, 12 V DC/2 A out) upgradable (TSAH0930-5, TSAH0931-5, TSAH0933-5)
Power Consumption	<ul style="list-style-type: none"> • Heater 24 V AC: 6 W (250 mA) • Heater 220 V AC: 5.3 W (23 mA) • Heater 12 V DC: 4.2 W (350 mA) • Blower: 1.68 W (140 mA)
LAN Interface	RJ-45 × 2 (PoE in/data output) for PoE model (TSAH0930-5, TSAH0931-5, TSAH0933-5)
Dimensions (W × H × L)	148 mm × 145 mm × 465 mm (5.83 in × 5.71 in × 18.31 in)
View Area (L × W)	80 mm × 70 mm (3.15 in × 2.76 in)
Suitable Camera Size (W × H × L)	<ul style="list-style-type: none"> • 105 mm × 100 mm × 320 mm (4.13 in × 3.94 in × 22.60 in) (empty housing) (TSAH0930) • 105 mm × 100 mm × 260 mm (4.13 in × 3.94 in × 10.24 in) (with heater/blower) (TSAH0931-1, TSAH0931-2, TSAH0931-4, TSAH0933-1, TSAH0933-2, TSAH0933-4) • 105 mm × 100 mm × 250 mm (4.13 in × 3.94 in × 9.84 in) (with heater/PoE module) (TSAH0930-5, TSAH0931-5) • 105 mm × 100 mm × 190 mm (4.13 in × 4.94 in × 7.48 in) (with heater/blower/PoE module) (TSAH0933-5)
Heater Control	On at 15 °C (59 °F), off at 25 °C (77 °F) (optional) (TSAH0931-1, TSAH0931-2, TSAH0931-4, TSAH0933-1, TSAH0933-2, TSAH0933-4, TSAH0931-5, TSAH0933-5)
Blower Control	On at 40 °C (104 °F), off at 30 °C (86 °F) (optional) (TSAH0933-1, TSAH0933-2, TSAH0933-4, TSAH0933-5)
Environmental Operation Temperature	-20 °C to 60 °C (-4 °F to 140 °F)
Temper Glass Thickness	2 mm (0.08 in)
Bracket (Optional)	Die-casting semi cable management bracket, TSAM0280 or standard bracket, TSAM0180 (optional)
Weight	2.6 kg (5.73 lb)
Certifications	CE, FCC, RoHS
IR Wave Length	-
IR Distance	-
IR H.V. Angle	-
IR LEDs	-
Expected Lifetime	-
IR Light On/Off	-

*Design and specifications are subject to change without prior notice.

TSAH1030

IP66 Latched Side Open Camera Housing

IP66 latched side open housing, Aluminum construction mixed with plastic covers, suitable camera size (W × H × L): 85 mm × 85 mm × 300 mm



Features

- IP66
- Input power voltage: 12 V DC/24 V AC/220 V AC (selectable)
- Built-in heater and blower(optional)
- Adjustable sliding camera tray and sealed cable entry glands (bottom side or back side)
- Aluminum construction
- Latched side opening for easy installation and camera setup
- Available as compact housings with cable management bracket or semi cable management bracket

Available Models

Models	Heater	Blower	PoE	Input Voltage
TSAH1030				
TSAH1031-1	+			12 V DC
TSAH1031-2	+			24 V AC
TSAH1031-4	+			220 V AC
TSAH1033-1	+	+		12 V DC
TSAH1033-2	+	+		24 V AC
TSAH1033-4	+	+		220 V AC

Tech Specs

Model	TSAH1030
Type	Outdoor latched side open housing
Weatherproof	IP66
Material/Color	Extruded Aluminum and ABS /beige and silver-grey

Model	TSAH1030
Input Voltage (Selectable)	<ul style="list-style-type: none"> • 12 V DC (TSAH1031-1, TSAH1033-1) • 24 V AC (TSAH1031-2, TSAH1033-2) • 220 V AC (TSAH1031-4, TSAH1033-4)
Power Consumption	<ul style="list-style-type: none"> • Heater 24 V AC: 6 W (250 mA) • Heater 220 V AC: 5.3 W (23 mA) • Heater 12 V DC: 4.2 W (350 mA) • Blower: 1.68 W (140 mA)
LAN Interface	-
Dimensions (W × H × L)	145 mm × mm 110 × mm 414 mm (5.71 in × 4.33 in × 16.30 in)
View Area (L × W)	75 mm × 75 mm (2.95 in × 2.95 in)
Suitable Camera Size (W × H × L)	<ul style="list-style-type: none"> • 85 mm × 85 mm × 300 mm (3.35 in × 3.35 in × 11.81 in) (empty housing) (TSAH1030) • 85 mm × 85 mm × 240 mm (3.35 in × 3.35 in × 9.45 in) (with heater) (TSAH1031-1, TSAH1031-2, TSAH1031-4) • 85 mm × 85 mm × 210 mm (3.35 in × 3.35 in × 8.27 in) (with heater and blower) (TSAH1033-1, TSAH1033-2, TSAH1033-4)
Heater Control	On at 15 °C (59 °F), off at 25 °C (77 °F) (optional) (TSAH1031-1, TSAH1031-2, TSAH1031-4, TSAH1033-1, TSAH1033-2, TSAH1033-4)
Blower Control	On at 40 °C (104 °F), off at 30 °C (86 °F) (optional) (TSAH1033-1, TSAH1033-2, TSAH1033-4)
Environmental Operation Temperature	-40 to 60 °C (-40 °F to 140 °F)
Temper Glass Thickness	2 mm (0.08 in)
Bracket (Optional)	Cable management bracket TSAM0275, die-casting semi cable management bracket, TSAM0280 or standard bracket, TSAM0180 (optional)
Weight	1.5 kg (3.31 lb)
Certifications	CE, FCC, RoHS
IR Wave Length	-
IR Distance	-
IR H.V. Angle	-
IR LEDs	-
Expected Lifetime	-
IR Light On/Off	-

*Design and specifications are subject to change without prior notice.

TSAH1130

IP66 Extruded Side Open Camera Housing with Cable Management Bracke Design

Empty Side open camera housing, IP66, extruded Aluminum construction, built-in sunshield, with cable management design, suitable camera size (W × H × L): 95 mm × 70 mm × 260 mm



Features

- IP66
- Input power voltage: 12 V DC/24 V AC/220 V AC (selectable)
- Built-in heater and blower (optional)
- Adjustable sliding camera tray and sealed cable entry glands
- Fully-cable management system
- Extruded Aluminum construction

Available Models

Models	Heater	Blower	PoE	Input Voltage
TSAH1130				
TSAH1131-1	+			12 V DC
TSAH1131-2	+			24 V AC
TSAH1131-4	+			220 V AC
TSAH1133-1	+	+		12 V DC
TSAH1133-2	+	+		24 V AC
TSAH1133-4	+	+		220 V AC

Tech Specs

Model	TSAH1130
Type	Outdoor side open camera housing
Weatherproof	IP66
Material/Color	Extruded Aluminum/Beige and white epoxy powder coating

Model	TSAH1130
Input Voltage (Selectable)	<ul style="list-style-type: none"> • 12 V DC (TSAH1131-1, TSAH1133-1) • 24 V AC (TSAH1131-2, TSAH1133-2) • 220 V AC (TSAH1131-4, TSAH1133-4)
Power Consumption	<ul style="list-style-type: none"> • Heater 24 V AC: 6 W (250 mA) • Heater 220 V AC: 5.3 W (23 mA) • Heater 12 V DC: 4.2 W (350 mA) • Blower: 1.68 W (140 mA)
LAN Interface	-
Dimensions (W × H × L)	147 mm × 115 mm × 377 mm (5.79 in × 4.53 in × 14.84 in)
View Area (L × W)	75 mm × 75 mm (2.95 in × 2.95 in)
Suitable Camera Size (W × H × L)	<ul style="list-style-type: none"> • 95 mm × 70 mm × 260 mm (3.74 in × 2.76 in × 10.24 in) (empty housing) (TSAH1130) • 95 mm × 70 mm × 200 mm (3.74 in × 2.76 in × 7.87 in) (with heater/blower) (TSAH1131-1, TSAH1131-2, TSAH1131-4, TSAH1133-1, TSAH1133-2, TSAH1133-4)
Heater Control	On at 15 °C (59 °F), off at 25 °C (77 °F) (optional) (TSAH1131-1, TSAH1131-2, TSAH1131-4, TSAH1133-1, TSAH1133-2, TSAH1133-4)
Blower Control	On at 40 °C (104 °F), off at 30 °C (86 °F) (optional) (TSAH1133-1, TSAH1133-2, TSAH1133-4)
Environmental Operation Temperature	-40 to 60 °C (-40 °F to 140 °F)
Temper Glass Thickness	2 mm (0.08 in)
Bracket (Optional)	Die-casting cable management bracket TSAM0275, semi cable management bracket TSAM0280 or standard bracket, TSAM0180 (optional)
Weight	2.5 kg (5.51 lb)
Certifications	CE, FCC, RoHS
IR Wave Length	-
IR Distance	-
IR H.V. Angle	-
IR LEDs	-
Expected Lifetime	-
IR Light On/Off	-

*Design and specifications are subject to change without prior notice.

TSAH0143

Aluminum Dome Housing

6-inch aluminum dome housing



Model	TSAH0143
Thickness	
Bracket (Optional)	-
Weight	-
Certifications	CE, FCC, RoHS
IR Wave Length	-
IR Distance	-
IR H.V. Angle	-
IR LEDs	-
Expected Lifetime	-
IR Light On/Off	-

*Design and specifications are subject to change without prior notice.

Features

- 6-inch Aluminum dome housing, suitable for indoor installation
- Double-decked design strengthens the heat insulation
- Built-in heater/blower (optional)
- Equipped with a stainless steel retaining cable
- FEVE coating: endure harsh environment, prevents acid and base moisture, five years warranty (optional)
- Transparent or smoked cover (selectable)
- Panel mounting hole: 225 mm (8.86 in)

Tech Specs

Model	TSAH0143
Type	6-inch half-sphere indoor speed dome housing
Weatherproof	-
Material/Color	Die-casting aluminum/beige
Input Power Voltage	12 V DC
Power Consumption	12 W maximum
LAN Interface	-
Dimensions (Ø × H)	250 mm × 257 mm (9.84 in × 10.12 in)
View Area (L × W)	-
Suitable Camera Size (W × H × L)	Contact us
Heater Control	On at 5 °C (41 °F), off at 15 °C (59 °F) (optional)
Blower Control	On at 40 °C (104 °F), off at 30 °C (86 °F) (optional)
Environmental Operation Temperature	-10 °C to 50 °C (14 °F to 122 °F)
Temper Glass	2 mm (0.08 in)

TSAH0343

Dome Housing

6-inch dome housing



Model	TSAH0343
Temperature	
Temper Glass Thickness	2 mm (0.08 in)
Bracket (Optional)	Cable management wall mount
Weight	-
Certifications	CE, FCC, RoHS, IP66, IK10
IR Wave Length	-
IR Distance	-
IR H.V. Angle	-
IR LEDs	-
Expected Lifetime	-
IR Light On/Off	-

*Design and specifications are subject to change without prior notice.

Features

- 6-inch Aluminum dome housing, suitable for outdoor and indoor installation
- Double-decked design strengthens the heat insulation
- Built-in heater/blower (optional)
- Equipped with a stainless steel retaining cable
- FEVE coating: endure harsh environment, prevents acid and base moisture, five years warranty (optional)
- Internal support for camera or adjustment for speed dome and network camera
- Transparent or smoked cover (selectable)

Tech Specs

Model	TSAH0343
Type	6-inch speed dome housing
Weatherproof	IP66, IK10
Material/Color	Die-casting aluminum/beige
Input Power Voltage	12 V DC
Power Consumption	12 W maximum
LAN Interface	-
Dimensions (Ø × H)	220 mm × 336 mm (8.66 in × 13.23 in)
View Area (L × W)	-
Suitable Camera Size (W × H × L)	Contact us
Heater Control	On at 5 °C (41 °F), off at 15 °C (59 °F) (optional)
Blower Control	On at 40 °C (104 °F), off at 30 °C (86 °F) (optional)
Environmental Operation	-40 °C to 50 °C (-40 °F to 122 °F)

TSAH0443

Aluminum Dome Housing

7-inch aluminum dome housing



Model	TSAH0443
Operation Temperature	
Temper Glass Thickness	2 mm (0.08 in)
Bracket (Optional)	Cable management wall mount
Weight	-
Certifications	CE, FCC, RoHS, IP66, IK10
IR Wave Length	-
IR Distance	-
IR H.V. Angle	-
IR LEDs	-
Expected Lifetime	-
IR Light On/Off	-

*Design and specifications are subject to change without prior notice.

Features

- 7-inch Aluminum dome housing, suitable for outdoor and indoor installation
- Double-decked design strengthens the heat insulation
- Built-in heater/blower (optional)
- Equipped with a stainless steel retaining cable
- FEVE coating: endurable environment, resistible acid & base, five years warranty (optional)
- Internal support for camera or adjustment for speed dome and network camera
- Transparent or smoked cover (selectable)
- Compatible with camera Panasonic model WV-SC385

Tech Specs

Model	TSAH0443
Type	7-inch speed dome housing
Weatherproof	IP66, IK10
Material/Color	Die-casting aluminum/beige
Input Power Voltage	12 V DC
Power Consumption	12 W maximum
LAN Interface	-
Dimensions (Ø × H)	275 mm × 431 mm (10.83 in × 16.97 in)
View Area (L × W)	-
Suitable Camera Size (W × H × L)	Contact us
Heater Control	On at 5 °C (41 °F), off at 15 °C (59 °F) (optional)
Blower Control	On at 40 °C (104 °F), off at 30 °C (86 °F) (optional)
Environmental	-40 °C to 50 °C (-40 °F to 122 °F)

TSAH0543-6

IP68 Aluminum Dome Housing with Nitrogen Pressurized

7-inch IP68 aluminum dome housing with nitrogen pressurized



Model	TSAH0543-6
Environmental Operation Temperature	-40 °C to 50 °C (-40 °F to 122 °F)
Temper Glass Thickness	2 mm (0.08 in)
Bracket (Optional)	Cable management wall mount
Weight	-
Certifications	CE, FCC, RoHS, IP68, IK10
IR Wave Length	-
IR Distance	-
IR H.V. Angle	-
IR LEDs	-
Expected Lifetime	-
IR Light On/Off	-

*Design and specifications are subject to change without prior notice.

Features

- 7-inch Aluminum dome housing, suitable for outdoor and indoor installation
- Double-decked design strengthens the heat insulation
- Built-in heater/blower (optional)
- Equipped with a stainless steel retaining cable
- FEVE coating: durable environment, resistible acid & base, five years warranty
- Nitrogen pressurized dome housing IP68
- Vandal proof dome cover
- Transparent or smoked cover (selectable)

Tech Specs

Model	TSAH0543-6
Type	7-inch speed dome housing with Nitrogen pressurized dome housing IP68
Weatherproof	IP68, IK10
Material/Color	Die-casting aluminum/beige
Input Power Voltage	12 V DC
Power Consumption	12 W maximum
LAN Interface	-
Dimensions (Ø × H)	275 mm × 431 mm (10.83 in × 16.97 in)
View Area (L × W)	-
Suitable Camera Size (W × H × L)	Contact us
Heater Control	On at 5 °C (41 °F), off at 15 °C (59 °F) (optional)
Blower Control	On at 40 °C (104 °F), off at 30 °C (86 °F) (optional)

TSAH0643

Aluminum Dome Housing

9-inch aluminum dome housing



Model	TSAH0643
Environmental Operation Temperature	-40 °C to 50 °C (-40 °F to 122 °F)
Temper Glass Thickness	2 mm (0.08 in)
Bracket (Optional)	Cable management wall mount
Weight	-
Certifications	CE, FCC, RoHS, IP66, IK10
IR Wave Length	-
IR Distance	-
IR H.V. Angle	-
IR LEDs	-
Expected Lifetime	-
IR Light On/Off	-

*Design and specifications are subject to change without prior notice.

Features

- 9-inch Aluminum dome housing, suitable for outdoor and indoor installation.
- Double-decked design strengthens the heat insulation.
- Inner side: ABS/Outer side: Aluminum/Cover: Acrylic
- Built-in heater/blower (optional)
- Equipped with a stainless steel retaining cable
- FEVE coating: durable environment, resistible acid & base, five years warranty (optional)
- Internal support for camera or adjustment for speed dome and network camera
- Wall mount bracket or pendant mount bracket (selectable)

Tech Specs

Model	TSAH0643
Type	9-inch speed dome housing
Weatherproof	IP66, IK10
Material/Color	Die-casting aluminum/beige
Input Power Voltage	12 V DC
Power Consumption	12 W maximum
LAN Interface	-
Dimensions (Ø × H)	310 mm × 428 mm (12.20 in × 16.85 in)
View Area (L × W)	-
Suitable Camera Size (W × H × L)	Contact us
Heater Control	On at 5 °C (41 °F), off at 15 °C (59 °F) (optional)
Blower Control	On at 40 °C (104 °F), off at 30 °C (86 °F) (optional)

TSAX0130

*Design and specifications are subject to change without prior notice.

IP66 Explosion Proof Camera Housing

IP66 large size explosion proof camera housing with stainless steel 304 material



Features

- IP66 big size
- Operation Temperature from -25 °C to 60 °C (-13 °F to 140 °F)
- Ex d II CT6 (H2) ex-proof marking
- Made in Stainless steel 304, suitable for chemical factories, outdoors applications

Tech Specs

Model	TSAX0130
Atmospheric Pressure	80 kPa to 106 kPa
Ambient Temperature	-25 °C to 60 °C (-13 °F to 140 °F)
Relative Humidity	No more than 95 % (25 °C)
Ex-proof Marking	Ex d II CT6 (H2)
Enclosure Protection	IP66
Voltage Input	220 V AC, 50 Hz (optional)
Dimensions (W × H × L)	420 mm × 195 mm × 194 mm (16.54 in × 7.68 in × 7.64 in)
Suitable Camera Size (W × H × L)	300 mm × 80 mm × 80 mm (11.81 in × 3.15 in × 3.15 in)
Window (Ø)	-
Weight	11 kg (24.25 lb)
Material	Stainless steel 304 (chemical factories, outdoors and so on)
Auto-heated	while it is < 1 °C (optional)
Installation	All mounting (recommending TSAM0190 bracket), or fixed at pan/tilt.

TSAX0230

*Design and specifications are subject to change without prior notice.

IP66 Explosion Proof Camera Housing

IP66 large size explosion proof camera housing with stainless steel 316L material



Features

- IP66 big size
- Operation Temperature from -25 °C to 60 °C (-13 °F to 140 °F)
- Ex d II CT6 (H2) ex-proof marking
- Made in Stainless steel 316L, suitable for sea environment, oil tankers applications

Tech Specs

Model	TSAX0230
Atmospheric Pressure	80 kPa to 106 kPa
Ambient Temperature	-25 °C to 60 °C (-13 °F to 140 °F)
Relative Humidity	No more than 95 % (25 °C)
Ex-proof Marking	Ex d II CT6 (H2)
Enclosure Protection	IP66
Voltage Input	220 V AC, 50 Hz (optional)
Dimensions (W × H × L)	420 mm × 195 mm × 194 mm (16.54 in × 7.68 in × 7.64 in)
Suitable Camera Size (W × H × L)	300 mm × 80 mm × 80 mm (11.81 in × 3.15 in × 3.15 in)
Window (Ø)	-
Weight	11 kg (24.25 lb)
Material	Stainless steel 316L (sea environment, oil tankers and so on)
Auto-heated	while it is < 1 °C (optional)
Installation	All mounting (recommending TSAM0290 bracket), or fixed at pan/tilt.

TSAX0330

*Design and specifications are subject to change without prior notice.

IP66 Explosion Proof Camera Housing

IP66 small size explosion proof camera housing with stainless steel 304 material



Features

- IP66 small size
- Operation Temperature from -25 °C to 60 °C (-13 °F to 140 °F)
- Ex d II CT6 (H2) ex-proof marking
- Made in Stainless steel 304, suitable for chemical factories, outdoors applications

Tech Specs

Model	TSAX0330
Atmospheric Pressure	80 kPa to 106 kPa
Ambient Temperature	-25 °C to 60 °C (-13 °F to 140 °F)
Relative Humidity	No more than 95 % (25 °C)
Ex-proof Marking	Ex d II CT6 (H2)
Enclosure Protection	IP66
Voltage Input	220 V AC, 50 Hz (optional)
Dimensions (W × H × L)	365.5 mm × 163 mm × 169.5 mm (14.39 in × 6.42 in × 6.67 in)
Suitable Camera Size (W × H × L)	260 mm × 80 mm × 80 mm (10.24 in × 3.15 in × 3.15 in)
Window (Ø)	-
Weight	6 kg (13.23 lb)
Material	Stainless steel 304 (chemical factories, outdoors and so on)
Auto-heated	while it is < 1 °C (optional)
Installation	All mounting (recommending TSAM0190 bracket), or fixed at pan/tilt.

TSAX0430

*Design and specifications are subject to change without prior notice.

IP66 Explosion Proof Camera Housing

IP66 small size explosion proof camera housing with stainless steel 316L material



Features

- IP66 small size
- Operation Temperature from -25 °C to 60 °C (-13 °F to 140 °F)
- Ex d II CT6 (H2) ex-proof marking
- Made in Stainless steel 316L, suitable for sea environment, oil tankers applications

Tech Specs

Model	TSAX0430
Atmospheric Pressure	80 kPa to 106 kPa
Ambient Temperature	-25 °C to 60 °C (-13 °F to 140 °F)
Relative Humidity	No more than 95 % (25 °C)
Ex-proof Marking	Ex d II CT6 (H2)
Enclosure Protection	IP66
Voltage Input	220 V AC, 50 Hz (optional)
Dimensions (W × H × L)	365.5 mm × 163 mm × 169.5 mm (14.39 in × 6.42 in × 6.67 in)
Suitable Camera Size (W × H × L)	260 mm × 80 mm × 80 mm (10.24 in × 3.15 in × 3.15 in)
Window (Ø)	-
Weight	6 kg (13.23 lb)
Material	Stainless steel 316L (sea environment, oil tankers and so on)
Auto-heated	while it is < 1 °C (optional)
Installation	All mounting (recommending TSAM0290 bracket), or fixed at pan/tilt.

TSAX0530

*Design and specifications are subject to change without prior notice.

IP68 Explosion Proof Camera Housing

IP68 small size explosion proof camera housing with stainless steel 304 material



Features

- IP66 compact size
- Operation Temperature from -25 °C to 60 °C (-13 °F to 140 °F)
- Ex d II BT6/DIP A21 TA, T6 ex-proof marking
- Made in Stainless steel 304, suitable for chemical factories, outdoors applications

Tech Specs

Model	TSAX0530
Atmospheric Pressure	80 kPa to 106 kPa
Ambient Temperature	-25 °C to 60 °C (-13 °F to 140 °F)
Relative Humidity	No more than 95 % (25 °C)
Ex-proof Marking	Ex d II BT6/DIP A21 TA, T6
Enclosure Protection	IP68
Voltage Input	220 V AC, 50 Hz (optional)
Dimensions (W × H × L)	365.5 mm × 163 mm × 169.5 mm (14.39 in × 6.42 in × 6.67 in)
Suitable Camera Size (W × H × L)	260 mm × 80 mm × 80 mm (10.24 in × 3.15 in × 3.15 in)
Window (Ø)	79 mm (3.11 in)
Weight	5.5 kg (12.13 lb)
Material	Stainless steel 304 (chemical factories, outdoors and so on)
Auto-heated	while it is < 1 °C (optional)
Installation	All mounting (recommending TSAM0190 bracket), or fixed at pan/tilt.

TSAX0630

*Design and specifications are subject to change without prior notice.

IP68 Explosion Proof Camera Housing

IP68 small size explosion proof camera housing with stainless steel 316L material



Features

- IP66 compact size
- Operation Temperature from -25 °C to 60 °C (-13 °F to 140 °F)
- Ex d II BT6/DIP A21 TA, T6 ex-proof marking
- Made in Stainless steel 316L, suitable for sea environment, oil tankers applications

Tech Specs

Model	TSAX0630
Atmospheric Pressure	80 kPa to 106 kPa
Ambient Temperature	-25 °C to 60 °C (-13 °F to 140 °F)
Relative Humidity	No more than 95 % (25 °C)
Ex-proof Marking	Ex d II BT6/DIP A21 TA, T6
Enclosure Protection	IP68
Voltage Input	220 V AC, 50 Hz (optional)
Dimensions (W × H × L)	365.5 mm × 163 mm × 169.5 mm (14.39 in × 6.42 in × 6.67 in)
Suitable Camera Size (W × H × L)	260 mm × 80 mm × 80 mm (10.24 in × 3.15 in × 3.15 in)
Window (Ø)	79 mm (3.11 in)
Weight	5.5 kg (12.13 lb)
Material	Stainless steel 316L (sea environment, oil tankers and so on)
Auto-heated	while it is < 1 °C (optional)
Installation	All mounting (recommending TSAM0290 bracket), or fixed at pan/tilt.

TSAX0740

IP68 Explosion Proof Dome Camera Housing

IP68 explosion proof dome camera housing with stainless steel 304 material



Features

- IP68 compact size
- Operation Temperature from -25 °C to 60 °C (-13 °F to 140 °F)
- Ex d II CT6/DIP A21 TA, T6 ex-proof marking
- Made in Stainless steel 304, suitable for chemical factories applications

Tech Specs

Model	TSAX0740
Atmospheric Pressure	80 kPa to 106 kPa
Ambient Temperature	-25 °C to 60 °C (-13 °F to 140 °F)
Relative Humidity	No more than 95 % (25 °C)
Ex-proof Marking	Ex d II CT6/DIP A21 TA, T6
Enclosure Protection	IP68
Voltage Input	220 V AC, 50 Hz (optional)
Dimensions (Ø × H)	204 mm × 446 mm (8.03 in × 17.56 in)
Suitable Camera Size (W × H × L)	-
Window (Ø)	-
Weight	12 kg (26.45 lb)
Material	Stainless steel 304 (chemical factories and so on)
Auto-heated	while it is < 1 °C (optional)
Installation	-

*Design and specifications are subject to change without prior notice.

TSAX0840

IP68 Explosion Proof Dome Camera Housing

IP68 explosion proof dome camera housing with stainless steel 316L material



Features

- IP68 compact size
- Operation Temperature from -25 °C to 60 °C (-13 °F to 140 °F)
- Ex d II CT6/DIP A21 TA, T6 ex-proof marking
- Made in Stainless steel 316L, suitable for sea environment, oil tankers applications

Tech Specs

Model	TSAX0840
Atmospheric Pressure	80 kPa to 106 kPa
Ambient Temperature	-25 °C to 60 °C (-13 °F to 140 °F)
Relative Humidity	No more than 95 % (25 °C)
Ex-proof Marking	Ex d II CT6/DIP A21 TA, T6
Enclosure Protection	IP68
Voltage Input	220 V AC, 50 Hz (optional)
Dimensions (Ø × H)	204 mm × 446 mm (8.03 in × 17.56 in)
Suitable Camera Size (W × H × L)	-
Window (Ø)	-
Weight	12 kg (26.45 lb)
Material	Stainless steel 316L (sea environment, oil tankers and so on)
Auto-heated	while it is < 1 °C (optional)
Installation	-

*Design and specifications are subject to change without prior notice.

TSAH0110

IP68 Side Open Camera Housing with 80 m IR LED Illuminator

Side open camera housing, pressure die-casting aluminum alloy construction, IP68, IR illuminator with distance up to 80 m, suitable camera size (W × H × L): 100 mm × 65 mm × 300 mm, built-in dual glasses



Features

- IP68 rating
- Designed for indoor and outdoor applications
- Input voltage: 12 V DC or PoE (48 V DC in, 12 V DC/2 A out) upgradable
- Built-in heater and blower (optional)
- Built-in IR illuminator with distance up to 80 m (262.47 ft)
- Adjustable sliding camera tray & sealed cable entry glands
- Fully-cable management system with swivel bracket
- Made in die-casting aluminum
- Lightweight for easy wall mounting
- High impact resistance
- Side opening
- Easy access for service and installation
- Withstand severe environment conditions
- Bundled cable-management bracket

Available Models

Models	Heater	Blower	PoE	Input Voltage
TSAH0110				
TSAH0113-1	+	+		12 V DC
TSAH0113-5	+	+	+	

Tech Specs

Model	TSAH0110
Type	Outdoor side open camera housing
Weatherproof	IP68
Material/Color	Die-casting aluminum/beige and white epoxy powder coating
Input Voltage	<ul style="list-style-type: none"> • 12 V DC (TSAH0113-1) • PoE (48 V DC in, 12 V DC/2 A out) upgradable (TSAH0113-5)
Power Consumption	<ul style="list-style-type: none"> • Heater 24 V AC: 6 W (250 mA) • Heater 220 V AC: 5.3 W (23 mA) • Heater 12 V DC: 4.2 W (350 mA) • Blower: 1.68 W (140 mA)
LAN Interface	RJ-45 × 2 (PoE in/data output) for PoE model
Dimensions (W × H × L)	145 mm × 109 mm × 406 mm (5.71 in × 4.29 in × 15.98 in)
View Area (L × W)	92 mm × 76 mm (3.62 in × 2.99 in)
Suitable Camera Size (W × H × L)	<ul style="list-style-type: none"> • 100 mm × 65 mm × 300 mm (3.94 in × 2.56 in × 11.81 in) (empty housing with IR board only) (TSAH0110) • 100 mm × 65 mm × 220 mm (3.94 in × 2.56 in × 8.66 in) (with heater/blower) (TSAH0113-1) • 100 mm × 65 mm × 200 mm (3.94 in × 2.56 in × 7.87 in) (with heater/blower/PoE module) (TSAH0113-5)
Heater Control	On at 15 °C (59 °F), off at 25 °C (77 °F) (optional) (TSAH0113-1, TSAH0113-5)
Blower Control	On at 40 °C (104 °F), off at 30 °C (86 °F) (optional) (TSAH0113-1, TSAH0113-5)
Environmental Operation Temperature	-40 °C to 50 °C (-40 °F to 122 °F)
Temper Glass Thickness	2 mm (0.08 in), dual glasses
Bracket	Die-casting cable management bracket, TSAM0465 or TSAM0165 (optional)
Weight	3.7 kg (8.16 lb)
Certifications	CE, FCC, RoHS
IR Wave Length	850 nm
IR Distance	80 m (262.47 ft)
IR H.V. Angle	30°
IR LEDs	6 pieces (IR on when lux is lower than 4 lux)
Expected Lifetime	20,000 hours
IR Light On/Off	Auto

*Design and specifications are subject to change without prior notice.

TSAH0210

IP68 Side Open Camera Housing with 50 m to 70 m IR LED Illuminator

Side open camera housing, pressure die-casting aluminum alloy construction, IP68, IR illuminator with distance up to 50 m to 70 m, suitable camera size (W × H × L): 100 mm × 65 mm × 300 mm, built-in dual glasses



Features

- IP68 rating
- Designed for indoor and outdoor applications
- Input power voltage: 12 V DC or PoE (48 V DC in, 12 V DC/2 A out) upgradable
- Built-in heater and blower (optional)
- Built-in IR illuminator with distance up to 50 m to 70 m (164.04 ft to 229.66 ft)
- Adjustable sliding camera tray & sealed cable entry glands
- Fully-cable management system with swivel bracket
- Made in die-casting aluminum
- Lightweight for easy wall mounting
- High impact resistance
- Side opening
- Easy access for service and installation
- Withstand severe environment conditions
- Bundled cable-management bracket

Available Models

Models	Heater	Blower	PoE	Input Voltage
TSAH0210				
TSAH0213-1	+	+		12 V DC
TSAH0213-5	+	+	+	

Tech Specs

Model	TSAH0210
Type	Outdoor side open camera housing
Weatherproof	IP68
Material/Color	Die-casting aluminum/beige and white epoxy powder coating
Input Power Voltage	<ul style="list-style-type: none"> • 12 V DC (TSAH0213-1) • PoE (48 V DC in, 12 V DC/2 A out) upgradable (TSAH0213-5)
Power Consumption	<ul style="list-style-type: none"> • Heater 24 V AC: 6 W (250 mA) • Heater 220 V AC: 5.3 W (23 mA) • Heater 12 V DC: 4.2 W (350 mA) • Blower: 1.68 W (140 mA)
LAN Interface	RJ-45 × 2 (PoE in/data output) for PoE model (TSAH0213-5)
Dimensions (W × H × L)	145 mm × 109 mm × 406 mm (5.71 in × 4.29 in × 15.98 in)
View Area (L × W)	92 mm × 76 mm (3.62 in × 2.99 in)
Suitable Camera Size (W × H × L)	<ul style="list-style-type: none"> • 100 mm × 65 mm × 300 mm (3.94 in × 2.56 in × 11.81 in) (empty housing with IR board only) (TSAH0210) • 100 mm × 65 mm × 220 mm (3.94 in × 2.56 in × 8.66 in) (with heater/blower) (TSAH0213-1) • 100 mm × 65 mm × 200 mm (3.94 in × 2.56 in × 7.87 in) (with heater/blower/PoE module) (TSAH0213-5)
Heater Control	On at 15 °C (59 °F), off at 25 °C (77 °F) (optional) (TSAH0213-1, TSAH0213-5)
Blower Control	On at 40 °C (104 °F), off at 30 °C (86 °F) (optional) (TSAH0213-1, TSAH0213-5)
Environmental Operation Temperature	-40 °C to 50 °C (-40 °F to 122 °F)
Temper Glass Thickness	2 mm (0.08 in), dual glasses
Bracket	Die-casting cable management bracket, TSAM0165 or TSAM0465 (optional)
Weight	3.7 kg (8.16 lb)
Certifications	CE, FCC, RoHS
IR Wave Length	850 nm
IR Distance	50 m to 70 m (164.04 ft to 229.66 ft)
IR H.V. Angle	30°
IR LEDs	24 pieces (IR on when lux is lower than 4 lux)
Expected Lifetime	20,000 hours
IR Light On/Off	Auto

*Design and specifications are subject to change without prior notice.

TSAH0310

IP66 Side Open Camera Housing with 40 m IR LED Illuminator

Side open camera housing, with sun-shield, IP66, IR illuminator with distance up to 40 m, suitable camera size (W × H × L): 95 mm × 70 mm × 260 mm, built-in dual glasses



Model	TSAH0310
(Selectable)	<ul style="list-style-type: none"> • 24 V AC (TSAH0313-2) • 220 V AC (TSAH0313-4)
Power Consumption	<ul style="list-style-type: none"> • Heater 24 V AC: 6 W (250 mA) • Heater 220 V AC: 5.3 W (23 mA) • Heater 12 V DC: 4.2 W (350 mA) • Blower: 1.68 W (140 mA)
LAN Interface	-
Dimensions (W × H × L)	147 mm × 115 mm × 377 mm (5.79 in × 4.53 in × 14.84 in)
View Area (L × W)	75 mm × 75 mm (2.95 in × 2.95 in)
Suitable Camera Size (W × H × L)	<ul style="list-style-type: none"> • 95 mm × 70 mm × 260 mm (3.74 in × 2.76 in × 10.23 in) (empty housing with IR board only) (TSAH0310) • 95 mm × 70 mm × 200 mm (3.74 in × 2.76 in × 7.87 in) (with heater/blower) (TSAH0313-1, TSAH0313-2, TSAH0313-4)
Heater Control	On at 15 °C (59 °F), off at 25 °C (77 °F) (optional) (TSAH0313-1, TSAH0313-2, TSAH0313-4)
Blower Control	On at 40 °C (104 °F), off at 30 °C (86 °F) (optional) (TSAH0313-1, TSAH0313-2, TSAH0313-4)
Environmental Operation Temperature	-20 °C to 50 °C (-4 °F to 122 °F)
Temper Glass Thickness	2 mm (0.08 in), dual glasses
Bracket	Die-casting semi cable management bracket, TSAM0280 or standard bracket, TSAM0180 (optional)
Weight	2.6 kg (5.73 lb)
Certifications	CE, FCC, RoHS
IR Wave Length	850 nm
IR Distance	40 m (131.23 ft) or 50 m to 70 m (164.04 ft to 229.66 ft) (selectable)
IR H.V. Angle	30°
IR LEDs	42 pieces, (Ø) 8 mm LED
Expected Lifetime	> 25000 hours
IR Light On/Off	Auto

*Design and specifications are subject to change without prior notice.

Features

- IP66
- Input power voltage: AC 230 V/24 V AC/12 V DC (selectable)
- Built-in heater and blower (optional)
- Built-in IR illuminator with distance up to 40 m (131.23 ft)
- Adjustable sliding camera tray & sealed cable entry glands
- Fully-cable management system with swivel bracket
- Made in extruded Aluminum

Available Models

Models	Heater	Blower	PoE	Input Voltage
TSAH0310				
TSAH0313-1	+	+		12 V DC
TSAH0313-2	+	+		24 V AC
TSAH0313-4	+	+		220 V AC

Tech Specs

Model	TSAH0310
Type	Outdoor side open camera housing
Weatherproof	IP66
Material/Color	Extruded Aluminum/beige and white epoxy powder coating
Input Voltage	<ul style="list-style-type: none"> • 12 V DC (TSAH0313-1)

TSAH0410

IP66 Side Open Camera Housing with 50 m to 70 m IR LED Illuminator

Side open camera housing, with sun-shield, IP66, IR illuminator with distance up to 50 m to 70 m, suitable camera size (W × H × L): 95 mm × 70 mm × 260 mm, built-in dual glasses



Model	TSAH0410
Input Voltage (Selectable)	<ul style="list-style-type: none"> • 12 V DC (TSAH0413-1) • 24 V AC (TSAH0413-2) • 220 V AC (TSAH0413-4)
Power Consumption	<ul style="list-style-type: none"> • Heater 24 V AC: 6 W (250 mA) • Heater 220 V AC: 5.3 W (23 mA) • Heater 12 V DC: 4.2 W (350 mA) • Blower: 1.68 W (140 mA)
LAN Interface	-
Dimensions (W × H × L)	147 mm × 115 mm × 377 mm (5.88 in × 4.23 in × 14.84 in)
View Area (L × W)	75 mm × 75 mm (2.95 in × 2.95 in)
Suitable Camera Size (W × H × L)	<ul style="list-style-type: none"> • 95 mm × 70 mm × 260 mm (3.74 in × 2.76 in × 10.24 in) (empty housing with IR board only) (TSAH0410) • 95 mm × 70 mm × 200 mm (3.74 in × 2.76 in × 7.87 in) (with heater/blower) (TSAH0413-1, TSAH0413-2, TSAH0413-4)
Heater Control	On at 15 °C (59 °F), off at 25 °C (77 °F) (optional) (TSAH0413-1, TSAH0413-2, TSAH0413-4)
Blower Control	On at 40 °C (104 °F), off at 30 °C (86 °F) (optional) (TSAH0413-1, TSAH0413-2, TSAH0413-4)
Environmental Operation Temperature	-20 °C to 50 °C (-4 °F to 122 °F)
Temper Glass Thickness	2 mm (0.08 in), dual glasses
Bracket (Optional)	Die-casting semi cable management bracket, TSAM0280 or standard bracket, TSAM0180 (optional)
Weight	2.6 kg (5.73 lb)
Certifications	CE, FCC, RoHS
IR Wave Length	850 nm
IR Distance	50 m to 70 m (164.04 ft to 229.66 ft)
IR H.V. Angle	30°
IR LEDs	42 pieces, (Ø) 8 mm LED
Expected Lifetime	> 25000 hours
IR Light On/Off	Auto

*Design and specifications are subject to change without prior notice.

Features

- IP66
- Input voltage: AC 230 V/24 V AC/12 V DC (selectable)
- Built-in heater and blower (optional)
- Built-in IR illuminator with distance up to 50 m to 70 m (164.04 ft to 229.66 ft)
- Adjustable sliding camera tray & sealed cable entry glands
- Fully-cable management system with swivel bracket
- Made in extruded Aluminum

Available Models

Models	Heater	Blower	PoE	Input Voltage
TSAH0410				
TSAH0413-1	+	+		12 V DC
TSAH0413-2	+	+		24 V AC
TSAH0413-4	+	+		220 V AC

Tech Specs

Model	TSAH0410
Type	Outdoor side open camera housing
Weatherproof	IP66
Material/Color	Extruded Aluminum/beige and white epoxy powder coating

TSAH0510

IP66 Side Open Camera Housing with 20 m Bucket IR LED Illuminator

Side open camera housing, with sun-shield, IP66, IR illuminator with distance up to 20 m, suitable camera size (W × H × L): 100 mm × 70 mm × 350 mm



Model	TSAH0510
Power Consumption	<ul style="list-style-type: none"> • Heater 24 V AC: 6 W (250 mA) • Heater 220 V AC: 5.3 W (23 mA) • Heater 12 V DC: 4.2 W (350 mA) • Blower: 1.68 W (140 mA) • IR LED: 12 V DC: 2 W (1000 mA)
LAN Interface	-
Dimensions (W × H × L)	155 mm × 110 mm × 400 mm (6.10 in × 4.33 in × 15.75 in)
View Area (L × W)	58 mm × 80 mm (2.28 in × 3.15 in)
Suitable Camera Size (W × H × L)	<ul style="list-style-type: none"> • 100 mm × 70 mm × 350 mm (3.93 in × 2.76 in × 13.78 in) (empty housing with IR LED) (TSAH0510) • 100 mm × 70 mm × 310 mm (3.93 in × 2.76 in × 12.20 in) (with heater/blower) (TSAH0513-1, TSAH0513-2, TSAH0513-4)
Heater Control	On at 15 °C (59 °F), off at 25 °C (77 °F) (optional) (TSAH0513-1, TSAH0513-2, TSAH0513-4)
Blower Control	On at 40 °C (104 °F), off at 30 °C (86 °F) (optional) (TSAH0513-1, TSAH0513-2, TSAH0513-4)
Environmental Operation Temperature	-20 °C to 50 °C (-4 °F to 122 °F)
Temper Glass Thickness	2 mm (0.08 in)
Bracket (Optional)	Die-casting cable management bracket, TSAM0265 (optional)
Weight	2.9 kg (6.39 lb)
Certifications	CE, FCC, RoHS
IR Wave Length	850 nm
IR Distance	20 m (65.62 ft)
IR H.V. Angle	60°
IR LEDs	1 piece high power IR LED
Expected Lifetime	> 25000 hours
IR Light On/Off	Auto

*Design and specifications are subject to change without prior notice.

Features

- IP66
- IR illuminator with distance up to 20 m (65.62 ft)
- Input voltage: 12 V DC/24 V AC/220 V AC (selectable)
- Built-in heater and blower (optional)
- Adjustable sliding camera tray & sealed cable entry glands
- Fully-cable management system with swivel bracket
- Die-casting aluminum construction

Available Models

Models	Heater	Blower	PoE	Input Voltage
TSAH0510				
TSAH0513-1	+	+		12 V DC
TSAH0513-2	+	+		24 V AC
TSAH0513-4	+	+		220 V AC

Tech Specs

Model	TSAH0510
Type	Outdoor side open camera housing
Weatherproof	IP66
Material/Color	Die-casting aluminum/beige
Input Voltage	<ul style="list-style-type: none"> • 12 V DC (TSAH0513-1) • 24 V AC (TSAH0513-2) • 220 V AC (TSAH0513-4)

TSAH0610

IP66 Side Open Camera Housing with 30 m Bucket IR LED Illuminator

Side open camera housing, with sun-shield, IP66, IR illuminator with distance up to 30 m, suitable camera size (W × H × L): 100 mm × 70 mm × 350 mm



Model	TSAH0610
Power Consumption	<ul style="list-style-type: none"> • Heater 24 V AC: 6 W (250 mA) • Heater 220 V AC: 5.3 W (23 mA) • Heater 12 V DC: 4.2 W (350 mA) • Blower: 1.68 W (140 mA) • IR LED: 12 V DC: 2 W (1000 mA)
LAN Interface	-
Dimensions (W × H × L)	155 mm × 110 mm × 400 mm (6.10 in × 4.33 in × 15.75 in)
View Area (L × W)	58 mm × 80 mm (2.28 in × 3.15 in)
Suitable Camera Size (W × H × L)	<ul style="list-style-type: none"> • 100 mm × 70 mm × 350 mm (3.94 in × 2.76 in × 13.78 in) (empty housing with IR LED) (TSAH0610) • 100 mm × 70 mm × 310 mm (3.94 in × 2.76 in × 12.20 in) (with heater/blower) (TSAH0613-1, TSAH0613-2, TSAH0613-4)
Heater Control	On at 15 °C (59 °F), off at 25 °C (77 °F) (optional) (TSAH0613-1 , TSAH0613-2 , TSAH0613-4)
Blower Control	On at 40 °C (104 °F), off at 30 °C (86 °F) (optional) (TSAH0613-1 , TSAH0613-2 , TSAH0613-4)
Environmental Operation Temperature	-20 °C to 50 °C (-4 °F to 122 °F)
Temper Glass Thickness	2 mm (0.08 in)
Bracket (Optional)	Die-casting cable management bracket, TSAM0265 (optional)
Weight	2.9 kg (6.39 lb)
Certifications	CE, FCC, RoHS
IR Wave Length	850 nm
IR Distance	30 m (98.42 ft)
IR H.V. Angle	45°
IR LEDs	1 piece high power IR LED
Expected Lifetime	> 25000 hours
IR Light On/Off	Auto

*Design and specifications are subject to change without prior notice.

Features

- IP66
- IR illuminator with distance up to 30 m (98.42 ft)
- Input voltage: 12 V DC/24 V AC/220 V AC (selectable)
- Built-in heater and blower (optional)
- Adjustable sliding camera tray & sealed cable entry glands
- Fully-cable management system with swivel bracket
- Die-casting aluminum construction

Available Models

Models	Heater	Blower	PoE	Input Voltage
TSAH0610				
TSAH0613-1	+	+		12 V DC
TSAH0613-2	+	+		24 V AC
TSAH0613-4	+	+		220 V AC

Tech Specs

Model	TSAH0610
Type	Outdoor side open camera housing
Weatherproof	IP66
Material/Color	Die-casting aluminum/beige
Input Voltage	<ul style="list-style-type: none"> • 12 V DC (TSAH0613-1) • 24 V AC (TSAH0613-2) • 220 V AC (TSAH0613-4)

TSAH0710

IP66 Side Open Camera Housing with 50 m Bucket IR LED Illuminator

Side open camera housing, with sun-shield, IP66, IR illuminator with distance up to 50 m, suitable camera size (W × H × L): 100 mm × 70 mm × 350 mm



Model	TSAH0710
Power Consumption	<ul style="list-style-type: none"> • Heater 24 V AC: 6 W (250 mA) • Heater 220 V AC: 5.3 W (23 mA) • Heater 12 V DC: 4.2 W (350 mA) • Blower: 1.68 W (140 mA) • IR LED: 12 V DC: 2 W (1000 mA)
LAN Interface	-
Dimensions (W × H × L)	155 mm × 110 mm × 400 mm (6.10 in × 4.33 in × 15.75 in)
View Area (L × W)	58 mm × 80 mm (2.28 in × 3.15 in)
Suitable Camera Size (W × H × L)	<ul style="list-style-type: none"> • 100 mm × 70 mm × 350 mm (3.94 in × 2.76 in × 13.78 in) (empty housing with IR LED) (TSAH0713-4) • 100 mm × 70 mm × 310 mm (3.94 in × 2.76 in × 12.20 in) (with heater/blower) (TSAH0713-1, TSAH0713-2, TSAH0713-4)
Heater Control	On at 15 °C (59 °F), off at 25 °C (77 °F) (optional) (TSAH0713-1, TSAH0713-2, TSAH0713-4)
Blower Control	On at 40 °C (104 °F), off at 30 °C (86 °F) (optional) (TSAH0713-1, TSAH0713-2, TSAH0713-4)
Environmental Operation Temperature	-20 °C to 50 °C (-4 °F to 122 °F)
Temper Glass Thickness	2 mm (0.08 in)
Bracket (Optional)	Die-casting cable management bracket, TSAM0265 (optional)
Weight	2.9 kg (6.39 lb)
Certifications	CE, FCC, RoHS
IR Wave Length	850 nm
IR Distance	50 m (164.04 ft)
IR H.V. Angle	15°
IR LEDs	1 piece high power IR LED
Expected Lifetime	> 25000 hours
IR Light On/Off	Auto

*Design and specifications are subject to change without prior notice.

Features

- IP66
- IR illuminator with distance up to 50 m (164 ft)
- Input voltage: 12 V DC/24 V AC/220 V AC (selectable)
- Built-in heater and blower (optional)
- Adjustable sliding camera tray & sealed cable entry glands
- Fully-cable management system with swivel bracket
- Die-casting aluminum construction

Available Models

Models	Heater	Blower	PoE	Input Voltage
TSAH0710				
TSAH0713-1	+	+		12 V DC
TSAH0713-2	+	+		24 V AC
TSAH0713-4	+	+		220 V AC

Tech Specs

Model	TSAH0710
Type	Outdoor side open camera housing
Weatherproof	IP66
Material/Color	Die-casting aluminum/beige
Input Voltage	<ul style="list-style-type: none"> • 12 V DC (TSAH0713-1) • 24 V AC (TSAH0713-2) • 220 V AC (TSAH0713-4)

TSAH0810

IP66 Side Open Camera Housing with 70 m Bucket IR LED Illuminator

Side open camera housing, with sun-shield, IP66, IR illuminator with distance up to 70 m, suitable camera size (W × H × L): 100 mm × 70 mm × 350 mm



Model	TSAH0810
Power Consumption	<ul style="list-style-type: none"> • Heater 24 V AC: 6 W (250 mA) • Heater 220 V AC: 5.3 W (23 mA) • Heater 12 V DC: 4.2 W (350 mA) • Blower: 1.68 W (140 mA) • IR LED: 12 V DC: 2 W (1000 mA)
LAN Interface	-
Dimensions (W × H × L)	155 mm × 110 mm × 400 mm (6.10 in × 4.33 in × 15.75 in)
View Area (L × W)	58 mm × 80 mm (2.28 in × 3.15 in)
Suitable Camera Size (W × H × L)	<ul style="list-style-type: none"> • 100 mm × 70 mm × 350 mm (3.94 in × 2.76 in × 13.78 in) (empty housing with IR LED) (TSAH0810) • 100 mm × 70 mm × 310 mm (3.94 in × 2.76 in × 12.20 in) (with heater/blower) (TSAH0813-1, TSAH0813-2, TSAH0813-4)
Heater Control	On at 15 °C (59 °F), off at 25 °C (77 °F) (optional) (TSAH0813-1, TSAH0813-2, TSAH0813-4)
Blower Control	On at 40 °C (104 °F), off at 30 °C (86 °F) (optional) (TSAH0813-1, TSAH0813-2, TSAH0813-4)
Environmental Operation Temperature	-20 °C to 50 °C (-4 °F to 122 °F)
Temper Glass Thickness	2 mm (0.08 in)
Bracket (Optional)	Die-casting cable management bracket, TSAM0265 (optional)
Weight	2.9 kg (6.39 lb)
Certifications	CE, FCC, RoHS
IR Wave Length	850 nm
IR Distance	70 m (229.66 ft)
IR H.V. Angle	8°
IR LEDs	1 piece high power IR LED
Expected Lifetime	> 25000 hours
IR Light On/Off	Auto

*Design and specifications are subject to change without prior notice.

Features

- IP66
- IR illuminator with distance up to 70 m (229.66 ft)
- Input voltage: 12 V DC/24 V AC/220 V AC (selectable)
- Built-in heater and blower (optional)
- Adjustable sliding camera tray & sealed cable entry glands
- Fully-cable management system with swivel bracket
- Die-casting aluminum construction

Available Models

Models	Heater	Blower	PoE	Input Voltage
TSAH0810				
TSAH0813-1	+	+		12 V DC
TSAH0813-2	+	+		24 V AC
TSAH0813-4	+	+		220 V AC

Tech Specs

Model	TSAH0810
Type	Outdoor side open camera housing
Weatherproof	IP66
Material/Color	Die-casting aluminum/beige
Input Voltage	<ul style="list-style-type: none"> • 12 V DC (TSAH0813-1) • 24 V AC (TSAH0813-2) • 220 V AC (TSAH0813-4)

TSAH0910

IP66 Latched Side Open Camera Housing with 50 m to 70 m IR LED Illuminator

Latched side open camera housing, with sunshield, IP66, IR illuminator with distance up to 50 m to 70 m, with cable management bracket design, suitable camera size (W × H × L): 85 mm × 85 mm × 300 mm, built-in dual glasses



Features

- IP66
- Input power voltage: 12 V DC/24 V AC/220 V AC (selectable)
- Built-in heater and blower (optional)
- Built-in IR illuminator with distance up to 50 m to 70 m (164.04 ft to 229.66 ft)
- Adjustable sliding camera tray and sealed cable entry glands (bottom side or back side)
- Aluminum construction
- Latched side opening for easy installation and camera setup
- Available as compact housings with cable management bracket or semi cable management bracket

Available Models

Models	Heater	Blower	PoE	Input Voltage
TSAH0910				
TSAH0913-1	+	+		12 V DC
TSAH0913-2	+	+		24 V AC
TSAH0913-4	+	+		220 V AC

Tech Specs

Model	TSAH0910
Type	Outdoor latched side open camera housing

Model	TSAH0910
Weatherproof	IP66
Material/Color	Extruded Aluminum with ABS/Beige and white epoxy powder coating
Input Voltage (Selectable)	<ul style="list-style-type: none"> • 12 V DC (TSAH0913-1) • 24 V AC (TSAH0913-2) • 220 V AC (TSAH0913-4)
Power Consumption	<ul style="list-style-type: none"> • Heater 24 V AC: 6 W (250 mA) • Heater 220 V AC: 5.3 W (23 mA) • Heater 12 V DC: 4.2 W (350 mA) • Blower: 1.68 W (140 mA)
LAN Interface	-
Dimensions (W × H × L)	145 mm × mm 110 × mm 414 mm (5.71 in × 4.33 in × 16.30 in)
View Area (L × W)	75 mm × 75 mm (2.95 in × 2.95 in)
Suitable Camera Size (W × H × L)	<ul style="list-style-type: none"> • 85 mm × 85 mm × 300 mm (3.35 in × 3.35 in × 11.81 in) (empty housing) (TSAH0910) • 85 mm × 85 mm × 210 mm (3.35 in × 3.35 in × 8.27 in) (with heater/blower) (TSAH0913-1, TSAH0913-2, TSAH0913-4)
Heater Control	On at 15 °C (59 °F), off at 25 °C (77 °F) (optional) (TSAH0913-1, TSAH0913-2, TSAH0913-4)
Blower Control	On at 40 °C (104 °F), off at 30 °C (86 °F) (optional) (TSAH0913-1, TSAH0913-2, TSAH0913-4)
Environmental Operation Temperature	-40 to 60 °C (-40 °F to 140 °F)
Temper Glass Thickness	2 mm (0.08 in)
Bracket (Optional)	Cable management bracket TSAM0275, die-casting semi cable management bracket, TSAM0280 or standard bracket, TSAM0180 (optional)
Weight	1.6 kg (3.53 lb)
Certifications	CE, FCC, RoHS
IR Wave Length	850 nm
IR Distance	50 m to 70 m (164.04 ft to 229.66 ft)
IR H.V. Angle	30°
IR LEDs	42 pieces, (Ø) 8 mm LED
Expected Lifetime	> 25000 hours
IR Light On/Off	Auto

*Design and specifications are subject to change without prior notice.

TSAH1010

IP66 Side Open Camera Housing with 50 m to 70 m IR LED Illuminator

Side open camera housing, with sunshield, IP66, IR illuminator with distance up to 50 m to 70 m, with cable management bracket design, suitable camera size (W × H × L): 95 × 70 × 260 mm, built-in dual glasses



Model	TSAH1010
Input Voltage (Selectable)	<ul style="list-style-type: none"> • 12 V DC (TSAH1013-1) • 24 V AC (TSAH1013-2) • 220 V AC (TSAH1013-4)
Power Consumption	<ul style="list-style-type: none"> • Heater 24 V AC: 6 W (250 mA) • Heater 220 V AC: 5.3 W (23 mA) • Heater 12 V DC: 4.2 W (350 mA) • Blower: 1.68 W (140 mA)
LAN Interface	-
Dimensions (W × H × L)	147 mm × 115 mm × 377 mm (5.79 in × 4.53 in × 14.84 in)
View Area (L × W)	75 mm × 75 mm (2.95 in × 2.95 in)
Suitable Camera Size (W × H × L)	<ul style="list-style-type: none"> • 95 mm × 70 mm × 260 mm (3.74 in × 2.76 in × 10.24 in) (empty housing) (TSAH1010) • 95 mm × 70 mm × 200 mm (3.74 in × 2.76 in × 7.87 in) (with heater/blower) (TSAH1013-1, TSAH1013-2, TSAH1013-4)
Heater Control	On at 15 °C (59 °F), off at 25 °C (77 °F) (optional) (TSAH1013-1, TSAH1013-2, TSAH1013-4)
Blower Control	On at 40 °C (104 °F), off at 30 °C (86 °F) (optional) (TSAH1013-1, TSAH1013-2, TSAH1013-4)
Environmental Operation Temperature	-40 to 60 °C (-40 °F to 140 °F)
Temper Glass Thickness	2 mm (0.08 in)
Bracket (Optional)	Die-casting cable management bracket TSAM0275
Weight	2.6 kg (5.73 lb)
Certifications	CE, FCC, RoHS
IR Wave Length	850 nm
IR Distance	50 m to 70 m (164.04 ft to 229.66 ft)
IR H.V. Angle	30°
IR LEDs	42 pieces, (Ø) 8 mm LED
Expected Lifetime	> 25000 hours
IR Light On/Off	Auto

*Design and specifications are subject to change without prior notice.

Features

- IP66
- Input power voltage: AC 230 V/24 V AC/12 V DC (selectable)
- Built-in heater and blower (optional)
- Built-in IR illuminator with distance up to 50 m to 70 m (164.04 ft to 229.66 ft)
- Adjustable sliding camera tray and sealed cable entry glands
- Fully-cable management system with swivel bracket
- Made in extruded Aluminum

Available Models

Models	Heater	Blower	PoE	Input Voltage
TSAH1010				
TSAH1013-1	+	+		12 V DC
TSAH1013-2	+	+		24 V AC
TSAH1013-4	+	+		220 V AC

Tech Specs

Model	TSAH1010
Type	Outdoor side open camera housing
Weatherproof	IP66
Material/Color	Extruded Aluminum/Beige and white epoxy powder coating

TSAH0150

IP68 IR Bullet Type Side Open Camera Module Housing

IP68 IR bullet type side open camera module housing



Model	TSAH0150
Bracket	Die-casting quick installation cable management bracket, TSAM0175 or cable management bracket, TSAM0275 (optional)
Weight	1.35 kg (2.98 lb)
Certifications	CE, FCC, RoHS
IR Wave Length	850 nm
IR Distance	30 m (98.42 ft)
IR H.V. Angle	50°
IR LEDs	18 pieces (IR on when Lux is lower than 4 lux)
Expected Lifetime	20,000 hours
IR Light On/Off	Auto

*Design and specifications are subject to change without prior notice.

Features

- IP68
- Input power voltage: 12 V DC/24 V AC/220 V AC (selectable)
- Built-in heater and blower (optional)
- Fully-cable management system with quick installation bracket
- Pressure die-casting aluminum alloy construction

Tech Specs

Model	TSAH0150
Type	Outdoor side open bullet type camera housing
Weatherproof	IP68
Material/Color	Die-casting aluminum/black
Input Power Voltage	12 V DC/24 V AC/220 V AC (selectable)
Power Consumption	-
LAN Interface	-
Dimensions (W × H × L)	100 mm × 110 mm × 300 mm (3.94 in × 4.33 in × 11.81 in)
View Area (Ø)	45 mm (1.77 in) (internal ring)
Suitable Camera Size (W × H × L)	80 mm × 80 mm × 190 mm (3.15 in × 3.15 in × 7.48 in)
Heater Control	-
Blower Control	-
Environmental Operation Temperature	-50 to 60 °C
Temper Glass Thickness	2 mm (0.08 in) dual glasses

TSAH0350

IP66 Dome Type Camera Module Housing

IP66 dome type camera module housing



Features

- IP66
- Input power voltage: 12 V DC/24 V AC/220 V AC (selectable)
- Built-in heater and blower (optional)
- Pressure die-casting aluminum alloy construction

Tech Specs

Model	TSAH0350
Type	Outdoor side open bullet type camera housing
Weatherproof	IP66
Material/Color	Die-casting aluminum/silver
Input Power Voltage	12 V DC/24 V AC/220 V AC (selectable)
Power Consumption	-
LAN Interface	-
Dimensions (Ø × H)	142 mm × 84 mm (5.59 in × 3.01 in)
View Area (Ø)	-
Suitable Camera Size (Ø × H)	42 mm × 42 mm (1.65 in × 1.65 in) to 28 mm × 28 mm (1.10 in × 1.10 in)
Heater Control	-
Blower Control	-
Environmental Operation Temperature	-40 °C to 50 °C (-40 °F to 122 °F)
Temper Glass Thickness	2 mm (0.08 in) dome cover
Bracket	L Type bracket, TSAM0140 (optional)
Weight	0.45 kg (0.99 lb)
Certifications	CE, FCC, RoHS
IR Wave Length	-
IR Distance	-
IR H.V. Angle	-
IR LEDs	-
Expected Lifetime	-
IR Light On/Off	-

*Design and specifications are subject to change without prior notice.

TSAD0200

IP68 IR Bullet Type Dummy Camera

IP68 IR bullet type dummy camera

Model	TSAD0200
Certifications	CE, FCC, RoHS
IR Wave Length	-
IR Distance	-
IR H.V. Angle	-
IR LEDs	-
Expected Lifetime	-
IR Light On/Off	-

*Design and specifications are subject to change without prior notice.



Features

- IP68
- Fully-cable management bracket
- Pressure die-casting aluminum alloy construction

Tech Specs

Model	TSAD0200
Type	Outdoor side open bullet type camera housing
Weatherproof	IP68
Material/Color	Die-casting aluminum/black
Input Power	-
Voltage	-
Power Consumption	-
LAN Interface	-
Dimensions (W × H × L)	100 mm × 110 mm × 300 mm (3.94 in × 4.33 in × 11.81 in)
View Area (Ø)	45 mm (1.77 in) (internal ring)
Suitable Camera Size (W × H × L)	80 mm × 80 mm × 190 mm (3.15 in × 3.15 in × 7.48 in)
Heater Control	-
Blower Control	-
Environmental Operation	-
Temperature	-
Temper Glass Thickness	2 mm (0.08 in) dual glasses
Bracket (Optional)	Die-casting quick installation cable management bracket (TSAM0175) or cable management bracket (TSAM0275)
Weight	1.35 kg (2.98 lb)

TSAD0600

IP66 Dome Type Dummy Camera

IP66 dome type dummy camera



Model	TSAD0600
IR H.V. Angle	-
IR LEDs	-
Expected Lifetime	-
IR Light On/Off	-

*Design and specifications are subject to change without prior notice.

Features

- IP66
- Pressure die-casting aluminum construction

Tech Specs

Model	TSAD0600
Type	Outdoor side open bullet type camera housing
Weatherproof	IP66
Material/Color	Die-casting aluminum/silver
Input Power	-
Voltage	-
Power Consumption	-
LAN Interface	-
Dimensions (Ø × H)	142 mm × 84 mm (5.59 in × 3.31 in)
View Area (Ø)	-
Suitable Camera Size (Ø × H)	-
Heater Control	-
Blower Control	-
Environmental Operation Temperature	-
Temper Glass Thickness	2 mm (0.08 in) dome cover
Bracket (Optional)	L Type bracket (TSAM0140)
Weight	0.45 kg (0.99 lb)
Certifications	CE, FCC, RoHS
IR Wave Length	-
IR Distance	-

TSAM0130

Aluminum Box Camera Bracket

9 cm metal box camera bracket



Tech Specs

Model	TSAM0130
Maximum Load	3 kg (6.61 lb)
Material	Metal (aluminum)
Dimensions (L × Ø)	90 mm × 56.8 mm (3.54 in × 2.24 in)
Weight	0.13 kg (0.29 lb)
Note	-

*Design and specifications are subject to change without prior notice.

TSAM0230

Aluminum Box Camera Bracket

13 cm metal box camera bracket



Tech Specs

Model	TSAM0230
Maximum Load	5 kg (11.02 lb)
Material	Metal (aluminum)
Dimensions (L × Ø)	130 mm × 56.8 mm (5.12 in × 2.24 in)
Weight	0.15 kg (0.33 lb)
Note	-

*Design and specifications are subject to change without prior notice.

TSAM0330

Aluminum Box Camera Bracket

17 cm metal box camera bracket



Tech Specs

Model	TSAM0330
Maximum Load	5 kg (11.02 lb)
Material	Metal (aluminum)
Dimensions (L × Ø)	170 mm × 56.8 mm (6.69 in × 2.24 in)
Weight	0.25 kg (0.55 lb)
Note	-

*Design and specifications are subject to change without prior notice.

TSAM0430

Aluminum Box Camera Bracket

17 cm metal box camera bracket



Tech Specs

Model	TSAM0430
Maximum Load	5 kg (11.02 lb)
Material	Metal (aluminum)
Dimensions (L x Ø)	170 mm x 56.8 mm (6.69 in x 2.24 in)
Weight	0.25 kg (0.55 lb)
Note	-

*Design and specifications are subject to change without prior notice.

TSAM0530

Box Camera Bracket

11.5 cm box camera bracket



Tech Specs

Model	TSAM0530
Maximum Load	1.5 kg (3.31 lb)
Material	Aluminum/plastic
Dimensions (L × Ø)	115 mm × 45.8 mm (4.53 in × 1.80 in)
Weight	0.1 kg (0.22 lb)
Note	-

*Design and specifications are subject to change without prior notice.

TSAM0630

Aluminum Box Camera Bracket

17 cm metal box camera bracket



Tech Specs

Model	TSAM0630
Maximum Load	7 kg (15.43 lb)
Material	Metal (aluminum)
Dimensions (L × Ø)	170 mm × 90 mm (6.69 in × 3.54 in)
Weight	0.4 kg (0.88 lb)
Note	-

*Design and specifications are subject to change without prior notice.

TSAM0165

Cable and Adaptor Management Bracket

Power cord and adaptor management bracket for
TSAH0630/TSAH0110/TSAH0210



Tech Specs

Model	TSAM0165
Maximum Load	30 kg (66.14 lb)
Material	Die-casting aluminum alloy
Dimensions (L x W x H)	278 mm x 138 mm x 210 mm (10.94 in x 5.43 in x 8.28 in)
Weight	1.8 kg (3.97 lb)
Note	Suitable for TSAH0630/TSAH0110/TSAH0210

*Design and specifications are subject to change without prior notice.

TSAM0175

Quick Installation Bullet Type Housing Bracket

Bullet type housing bracket for TSAH0150



Tech Specs

Model	TSAM0900
Maximum Load	20 kg (44.09 lb)
Material	Die-casting aluminum alloy
Dimensions (L × W × H)	200 × 127 mm
Weight	0.68 kg (1.50 lb)
Note	Suitable for TSAH0150

*Design and specifications are subject to change without prior notice.

TSAM0180

Housing Bracket

Bracket for TSAH0330/TSAH0730/TSAH0310/TSAH0410



Tech Specs

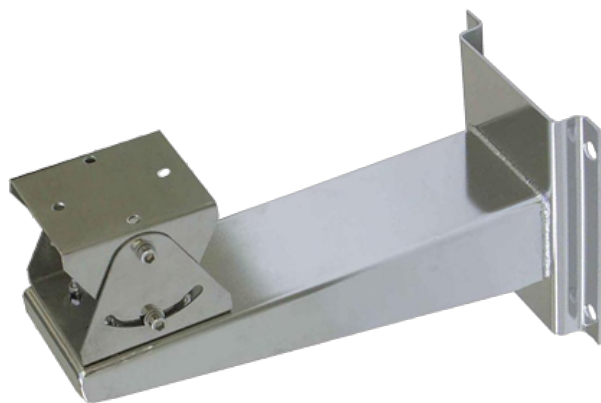
Model	TSAM0180
Maximum Load	10 kg (22.05 lb)
Material	Die-casting aluminum alloy
Dimensions (L × W × H)	248 mm × 82 mm × 130 mm (9.76 in × 3.23 in × 5.12 in)
Weight	0.35 kg (0.77 lb)
Note	Suitable for TSAH0330/TSAH0730/TSAH0310/TSAH0410

*Design and specifications are subject to change without prior notice.

TSAM0190

Explosion Proof Bracket

Explosion proof bracket with stainless steel 304 material for TSAX0130/TSAX0330/TSAX0530



Tech Specs

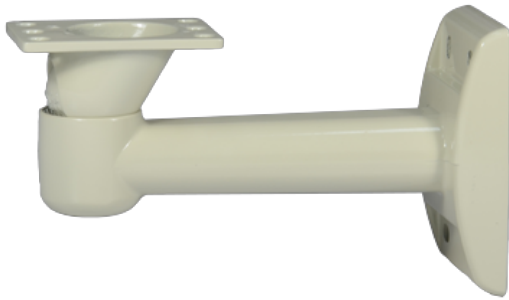
Model	TSAM0190
Maximum Load	60 kg (132.28 lb)
Material	Stainless steel 304
Dimensions (L x W x H)	295 mm x 150 mm x 130 mm (11.61 in x 5.91 in x 5.12 in)
Weight	1.8 kg (3.97 lb)
Note	Suitable for TSAX0130/TSAX0330/TSAX0530

*Design and specifications are subject to change without prior notice.

TSAM0265

Housing Bracket

Housing bracket for TSAH0430/TSAH0530/TSAH0830/TSAH0510/TSAH0610/TSAH0710/TSAH0810



Tech Specs

Model	TSAM0265
Maximum Load	10 kg (22.05 lb)
Material	Die-casting aluminum alloy
Dimensions (L × W × H)	208 mm × 75 mm × 115 mm (8.19 in × 2.95 in × 4.53 in)
Weight	0.68 kg (1.50 lb)
Note	Suitable for TSAH0430/TSAH0530/TSAH0830/TSAH0510/TSAH0610/TSAH0710/TSAH0810

*Design and specifications are subject to change without prior notice.

TSAM0275

Housing Bracket

Housing bracket for TSAH0630/TSAH0110/TSAH0210



Tech Specs

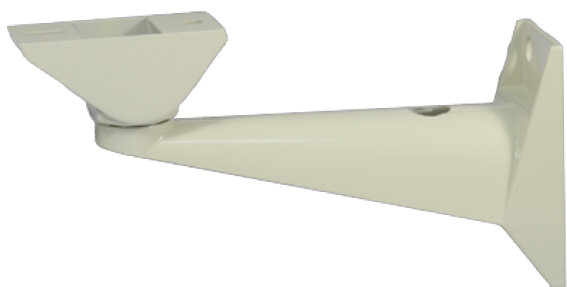
Model	TSAM0275
Maximum Load	20 kg (44.09 lb)
Material	Die-casting aluminum alloy
Dimensions (L × W × H)	213 × 146 mm
Weight	0.69 kg (1.52 lb)
Note	Suitable for TSAH0630/TSAH0110/TSAH0210

*Design and specifications are subject to change without prior notice.

TSAM0280

Housing Bracket

Housing bracket for TSAH0330/TSAH0730/TSAH0310/TSAH0410



Tech Specs

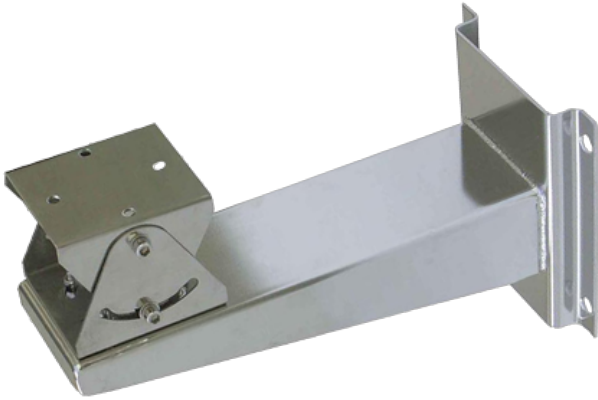
Model	TSAM0280
Maximum Load	10 kg (22.05 lb)
Material	Die-casting aluminum alloy
Dimensions (L × W × H)	205 mm × 69 mm × 116 mm (8.07 in × 2.72 in × 4.57 in)
Weight	0.57 kg (1.26 lb)
Note	Suitable for TSAH0330/TSAH0730/TSAH0310/TSAH0410

*Design and specifications are subject to change without prior notice.

TSAM0290

Explosion Proof Bracket

Explosion proof bracket with stainless steel 316L material for TSAX0230/TSAX0430/TSAX0630



Tech Specs

Model	TSAM0290
Maximum Load	60 kg (132.28 lb)
Material	Stainless steel 316L
Dimensions (L × W × H)	295 mm × 150 mm × 130 mm (11.61 in × 5.91 in × 4.72 in)
Weight	1.8 kg (3.97 lb)
Note	Suitable for TSAX0230/TSAX0430/TSAX0630

*Design and specifications are subject to change without prior notice.

TSAM0465

Housing Bracket

Housing bracket for TSAH0630/TSAH0110/TSAH0210



Tech Specs

Model	TSAM0465
Maximum Load	20 kg (44.09 lb)
Material	Die-cast Aluminum alloy
Dimensions (L × W × H)	210 mm × 140 mm × 75 mm (8.27 in × 5.11 in × 2.95 in)
Weight	0.65 kg (1.43 lb)
Note	Suitable for TSAH0630/TSAH0110/TSAH0210

*Design and specifications are subject to change without prior notice.

TSAM0140

L Type Bracket for Dome

L type dome bracket for TSAH0350/TSAD0600



Tech Specs

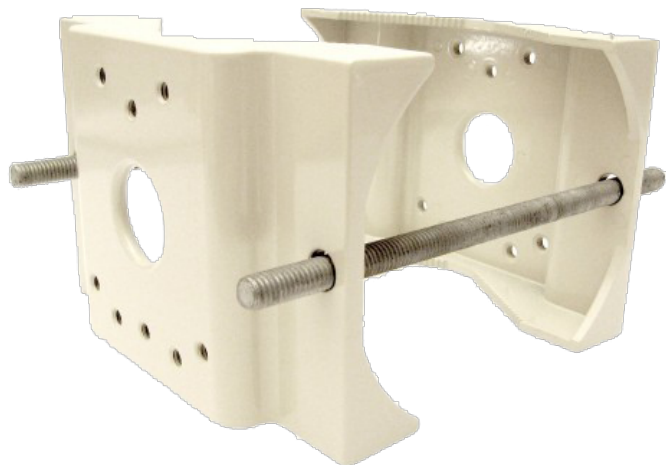
Model	TSAM0140
Maximum Load	2 kg (4.41 lb)
Material	Die-casting aluminum alloy
Dimensions (L × W × H)	147 mm × 138 mm × 110 mm (5.79 in × 5.43 in × 4.33 in)
Weight	0.7 kg (1.54 lb)
Note	Suitable for TSAH0350/TSAD0600

*Design and specifications are subject to change without prior notice.

TSAM0108

Pole Mount Bracket

Lamp pole mount bracket



Tech Specs

Model	TSAM0108
Maximum Load	20 kg (44.09 lb)
Material	Die-casting aluminum alloy
Dimensions (L × W × H)	90 mm to 140 mm
Weight	1.3 kg (2.87 lb)
Note	-

*Design and specifications are subject to change without prior notice.

TSAM0208

Pole Mount Bracket

Lamp pole mount bracket



Tech Specs

Model	TSAM0208
Maximum Load	20 kg (44.09 lb)
Material	Die-casting aluminum alloy
Dimensions (L x W x H)	105 to 145 mm
Weight	0.94 kg (2.07 lb)
Note	-

*Design and specifications are subject to change without prior notice.