



2014

TS Product Catalogue



Precision Products



TSAH0230

IP67 Top Opening Camera Housing

Empty IP67 camera housing, die-cast aluminum construction, internal usable size (W × H × L): 110 mm × 70 mm × 250 mm



Features

- IP67, NEMA-6 enclosure rating
- Designed for indoor and outdoor applications
- Input power: 12 V DC/24 V AC/220 V AC (available) or PoE (upgradable)
- Built-in heater and blower (optional)
- Adjustable sliding camera tray
- Cable entry glands and mounting holes on back of housing
- Die-cast aluminum construction
- Top opening for easy installation and camera setup
- Bundled internal cable managed bracket

Available Models

Model	Heater	Blower	Input Power
TSAH0230			
TSAH0231-1	+		12 V DC
TSAH0231-2	+		24 V AC
TSAH0231-4	+		220 V AC
TSAH0233-1	+	+	12 V DC
TSAH0233-2	+	+	24 V AC
TSAH0233-4	+	+	220 V AC
TSAH0233-9	+	+	PoE

Tech Specs

Model	TSAH0230
Type	Indoor/Outdoor, top-opening
Protection Rating	IP67, NEMA-6 enclosure rating

Model	TSAH0230
Material	Die-cast aluminum
Finish	White polyester powder coat
Input Power	<ul style="list-style-type: none"> • 12 V DC (TSAH0231-1, TSAH0233-1) • 24 V AC (TSAH0231-2, TSAH0233-2) • 220 V AC (TSAH0231-4, TSAH0233-4) • PoE (48 V DC) (TSAH0233-9)
Power Consumption	<ul style="list-style-type: none"> • Heater (24 V AC): 6 W (250 mA) • Heater (220 V AC): 5.3 W (23 mA) • Heater (12 V DC): 4.2 W (350 mA) • Blower: 1.68 W (140 mA)
Network Interface	RJ-45 × 2 (PoE input/PoE output) (TSAH0233-9)
Dimensions (W × H × L)	125 mm × 120 mm × 385 mm (4.92 in × 4.72 in × 15.16 in)
Window Viewing Area (W × H)	60 mm × 80 mm (2.36 in × 3.15 in)
Window Thickness	2 mm (0.08 in), tempered glass
Internal Usable Size (W × H × L)	<ul style="list-style-type: none"> • 110 mm × 70 mm × 250 mm (4.33 in × 2.76 in × 9.84 in) (TSAH0230) • 110 mm × 70 mm × 210 mm (4.33 in × 2.76 in × 8.27 in) (TSAH0231-1, TSAH0231-2, TSAH0231-4, TSAH0233-1, TSAH0233-2, TSAH0233-4, TSAH0233-9)
Heater Control	On at 15 °C ± 3 °C (59 °F ± 5 °F), off at 25 °C ± 3 °C (77 °F ± 5 °F) (TSAH0231-1, TSAH0231-2, TSAH0231-4, TSAH0233-1, TSAH0233-2, TSAH0233-4, TSAH0233-9)
Blower Control	On at 40 °C ± 3 °C (104 °F ± 5 °F), off at 30 °C ± 3 °C (86 °F ± 5 °F) (TSAH0233-1, TSAH0233-2, TSAH0233-4, TSAH0233-9)
Operating Ambient Temperature	-20 °C to 50 °C (-4 °F to 122 °F)
Related Products	-
Weight	1.9 kg (4.19 lb)
Certifications	CE, FCC, RoHS

*Design and specifications are subject to change without prior notice.

TSAH0330

IP66 Cost Effective Camera Housing

Empty IP66 camera housing, aluminum construction, internal usable size (W × H × L): 76 mm × 72 mm × 300 mm



Features

- IP66, NEMA-4X enclosure rating
- Designed for indoor and outdoor applications
- Input power: 12 V DC/24 V AC/220 V AC (available) or PoE (upgradable)
- Built-in heater and blower (optional)
- Adjustable sliding camera tray
- Cable entry glands and mounting holes on back of housing
- Extruded aluminum body and sunshield; die-cast aluminum end caps
- Slide-out opening for easy installation and camera setup

Available Models

Model	Heater	Blower	Input Power
TSAH0330			
TSAH0331-1	+		12 V DC
TSAH0331-2	+		24 V AC
TSAH0331-4	+		220 V AC
TSAH0333-1	+	+	12 V DC
TSAH0333-2	+	+	24 V AC
TSAH0333-4	+	+	220 V AC
TSAH0333-9	+	+	PoE

Tech Specs

Model	TSAH0330
Type	Indoor/Outdoor, slide-out opening
Protection Rating	IP66, NEMA-4X enclosure rating
Material	Extruded aluminum body and sunshield; die-cast aluminum end caps

Model	TSAH0330
Finish	Beige polyester powder coat
Input Power	<ul style="list-style-type: none"> • 12 V DC (TSAH0331-1, TSAH0333-1) • 24 V AC (TSAH0331-2, TSAH0333-2) • 220 V AC (TSAH0331-4, TSAH0333-4) • PoE (48 V DC) (TSAH0333-9)
Power Consumption	<ul style="list-style-type: none"> • Heater (24 V AC): 6 W (250 mA) • Heater (220 V AC): 5.3 W (23 mA) • Heater (12 V DC): 4.2 W (350 mA) • Blower: 1.68 W (140 mA)
Network Interface	RJ-45 × 2 (PoE input/PoE output) (TSAH0333-9)
Dimensions (W × H × L)	118 mm × 107 mm × 410 mm (4.65 in × 4.21 in × 16.14 in)
Window Viewing Area (W × H)	58 mm × 80 mm (2.28 in × 3.15 in)
Window Thickness	2 mm (0.08 in), tempered glass
Internal Usable Size (W × H × L)	<ul style="list-style-type: none"> • 76 mm × 72 mm × 300 mm (2.99 in × 2.83 in × 11.81 in) (TSAH0330) • 76 mm × 72 mm × 250 mm (2.99 in × 2.83 in × 9.84 in) (TSAH0331-1, TSAH0331-2, TSAH0331-4, TSAH0333-1, TSAH0333-2, TSAH0333-4, TSAH0333-9)
Heater Control	On at 15 °C ± 3 °C (59 °F ± 5 °F), off at 25 °C ± 3 °C (77 °F ± 5 °F) (TSAH0331-1, TSAH0331-2, TSAH0331-4, TSAH0333-1, TSAH0333-2, TSAH0333-4, TSAH0333-9)
Blower Control	On at 40 °C ± 3 °C (104 °F ± 5 °F), off at 30 °C ± 3 °C (86 °F ± 5 °F) (TSAH0333-1, TSAH0333-2, TSAH0333-4, TSAH0333-9)
Operating Ambient Temperature	-20 °C to 50 °C (-4 °F to 122 °F)
Related Products	-
Weight	1.7 kg (3.75 lb)
Certifications	CE, FCC, RoHS

*Design and specifications are subject to change without prior notice.

TSAH0430

IP66 Side Opening Polycarbonate Camera Housing

Empty IP66 camera housing, polycarbonate construction, internal usable size (W × H × L): 95 mm × 80 mm × 250 mm



Features

- IP66, NEMA-4X enclosure rating
- Designed for indoor and outdoor applications
- Input power: 12 V DC/24 V AC/220 V AC (available) or PoE (upgradable)
- Built-in heater and blower (optional)
- Adjustable sliding camera tray
- Cable entry glands and mounting holes on bottom of housing
- Polycarbonate construction
- Hinged side opening for easy installation and camera setup
- Bundled internal cable managed bracket

Available Models

Model	Heater	Blower	Input Power
TSAH0430			
TSAH0431-1	+		12 V DC
TSAH0431-2	+		24 V AC
TSAH0431-4	+		220 V AC
TSAH0433-1	+	+	12 V DC
TSAH0433-2	+	+	24 V AC
TSAH0433-4	+	+	220 V AC
TSAH0430-5			PoE
TSAH0431-5	+		PoE
TSAH0433-5	+	+	PoE
TSAH0433-9	+	+	PoE

Tech Specs

Model	TSAH0430
Type	Indoor/Outdoor, side opening
Protection Rating	IP66, NEMA-4X enclosure rating
Material	Polycarbonate
Finish	Beige
Input Power	<ul style="list-style-type: none"> • 12 V DC (TSAH0431-1, TSAH0433-1) • 24 V AC (TSAH0431-2, TSAH0433-2) • 220 V AC (TSAH0431-4, TSAH0433-4) • PoE (IEEE 802.3at Class 4 PoE Plus compliant) (TSAH0430-5, TSAH0431-5, TSAH0433-5) • PoE (48 V DC) (TSAH0433-9)
Power Consumption	<ul style="list-style-type: none"> • Heater (24 V AC): 6 W (250 mA) • Heater (220 V AC): 5.3 W (23 mA) • Heater (12 V DC): 4.2 W (350 mA) • Blower: 1.68 W (140 mA)
Network Interface	<ul style="list-style-type: none"> • RJ-45 × 2 (PoE input/data output) (TSAH0430-5, TSAH0431-5, TSAH0433-5) • RJ-45 × 2 (PoE input/PoE output) (TSAH0433-9)
Dimensions (W × H × L)	151 mm × 145 mm × 390 mm (5.94 in × 5.71 in × 15.35 in)
Window Viewing Area (W × H)	74 mm × 74 mm (2.91 in × 2.91 in)
Window Thickness	2 mm (0.08 in), tempered glass
Internal Usable Size (W × H × L)	<ul style="list-style-type: none"> • 95 mm × 80 mm × 250 mm (3.74 in × 3.15 in × 9.84 in) (TSAH0430, TSAH0431-1, TSAH0431-2, TSAH0431-4, TSAH0433-1, TSAH0433-2, TSAH0433-4, TSAH0433-9) • 95 mm × 80 mm × 215 mm (3.74 in × 3.15 in × 8.46 in) (TSAH0430-5, TSAH0431-5, TSAH0433-5)
Heater Control	On at 15 °C ± 3 °C (59 °F ± 5 °F), off at 25 °C ± 3 °C (77 °F ± 5 °F) (TSAH0431-1, TSAH0431-2, TSAH0431-4, TSAH0433-1, TSAH0433-2, TSAH0433-4, TSAH0431-5, TSAH0433-5, TSAH0433-9)
Blower Control	On at 40 °C ± 3 °C (104 °F ± 5 °F), off at 30 °C ± 3 °C (86 °F ± 5 °F) (TSAH0433-1, TSAH0433-2, TSAH0433-4, TSAH0433-5, TSAH0433-9)
Operating Ambient Temperature	-20 °C to 50 °C (-4 °F to 122 °F)
Related Products	-
Weight	1.9 kg (4.19 lb)
Certifications	CE, FCC, RoHS

*Design and specifications are subject to change without prior notice.

TSAH0530

IP66/IP67 Side Opening Die-cast Aluminum Camera Housing

Empty IP66/67 camera housing, die-cast aluminum construction, internal usable size (W × H × L): 100 mm × 70 mm × 350 mm



Features

- IP66/IP67, NEMA-4X/NEMA-6 enclosure rating
- Designed for indoor and outdoor applications
- Input power: 12 V DC/24 V AC/220 V AC (available) or PoE (upgradable)
- Built-in heater and blower (optional)
- Adjustable sliding camera tray
- Cable entry glands and mounting holes on bottom of housing
- Die-cast aluminum construction
- Hinged side opening for easy installation and camera setup
- Bundled internal cable managed bracket

Available Models

Model	Heater	Blower	Input Power
TSAH0530			
TSAH0531-1	+		12 V DC
TSAH0531-2	+		24 V AC
TSAH0531-4	+		220 V AC
TSAH0533-1	+	+	12 V DC
TSAH0533-2	+	+	24 V AC
TSAH0533-4	+	+	220 V AC
TSAH0530-5			PoE
TSAH0531-5	+		PoE
TSAH0533-5	+	+	PoE
TSAH0533-9	+	+	PoE

Tech Specs

Model	TSAH0530
Type	Indoor/Outdoor, side opening
Protection Rating	IP66/IP67, NEMA-4X/NEMA-6 enclosure rating
Material	Die-cast aluminum
Finish	Beige polyester powder coat
Input Power	<ul style="list-style-type: none"> • 12 V DC (TSAH0531-1, TSAH0533-1) • 24 V AC (TSAH0531-2, TSAH0533-2) • 220 V AC (TSAH0531-4, TSAH0533-4) • PoE (IEEE 802.3at Class 4 PoE Plus compliant) (TSAH0530-5, TSAH0531-5, TSAH0533-5) • PoE (48 V DC) (TSAH0533-9)
Power Consumption	<ul style="list-style-type: none"> • Heater (24 V AC): 6 W (250 mA) • Heater (220 V AC): 5.3 W (23 mA) • Heater (12 V DC): 4.2 W (350 mA) • Blower: 1.68 W (140 mA)
Network Interface	<ul style="list-style-type: none"> • RJ-45 × 2 (PoE input/data output) (TSAH0530-5, TSAH0531-5, TSAH0533-5) • RJ-45 × 2 (PoE input/PoE output) (TSAH0533-9)
Dimensions (W × H × L)	155 mm × 110 mm × 400 mm (6.10 in × 4.33 in × 15.75 in)
Window Viewing Area (W × H)	58 mm × 80 mm (2.28 in × 3.15 in)
Window Thickness	2 mm (0.08 in), tempered glass
Internal Usable Size (W × H × L)	<ul style="list-style-type: none"> • 100 mm × 70 mm × 350 mm (3.94 in × 2.76 in × 13.78 in) (TSAH0530) • 100 mm × 70 mm × 310 mm (3.94 in × 2.76 in × 12.20 in) (TSAH0531-1, TSAH0531-2, TSAH0531-4, TSAH0533-1, TSAH0533-2, TSAH0533-4, TSAH0533-9) • 100 mm × 70 mm × 200 mm (3.94 in × 2.76 in × 7.87 in) (TSAH0530-5, TSAH0531-5, TSAH0533-5)
Heater Control	On at 15 °C ± 3 °C (59 °F ± 5 °F), off at 25 °C ± 3 °C (77 °F ± 5 °F) (TSAH0531-1, TSAH0531-2, TSAH0531-4, TSAH0533-1, TSAH0533-2, TSAH0533-4, TSAH0531-5, TSAH0533-5, TSAH0533-9)
Blower Control	On at 40 °C ± 3 °C (104 °F ± 5 °F), off at 30 °C ± 3 °C (86 °F ± 5 °F) (TSAH0533-1, TSAH0533-2, TSAH0533-4, TSAH0533-5, TSAH0533-9)
Operating Ambient Temperature	-20 °C to 50 °C (-4 °F to 122 °F)
Related Products	-
Weight	2.5 kg (5.51 lb)
Certifications	CE, FCC, RoHS

*Design and specifications are subject to change without prior notice.

TSAH0630

IP68 Side Opening Die-cast Aluminum Camera Housing

Empty IP68 side opening camera housing, die-cast aluminum construction, internal usable size (W × H × L): 100 mm × 80 mm × 335 mm



Features

- IP68, NEMA-6P enclosure rating
- Designed for indoor and outdoor applications
- Input power: 12 V DC/24 V AC/220 V AC (available) or PoE (upgradable)
- Built-in heater and blower (optional)
- Adjustable sliding camera tray
- Cable entry glands and mounting holes on bottom of housing
- Die-cast aluminum construction
- High impact resistance
- Hinged side opening for easy installation and camera setup
- Bundled internal cable managed bracket

Available Models

Model	Heater	Blower	Input Power
TSAH0630			
TSAH0631-1	+		12 V DC
TSAH0631-2	+		24 V AC
TSAH0631-4	+		220 V AC
TSAH0633-1	+	+	12 V DC
TSAH0633-2	+	+	24 V AC
TSAH0633-4	+	+	220 V AC
TSAH0630-5			PoE
TSAH0631-5	+		PoE
TSAH0633-5	+	+	PoE
TSAH0633-9	+	+	PoE

Tech Specs

Model	TSAH0630
Type	Indoor/Outdoor, side opening
Protection Rating	IP68, NEMA-6P enclosure rating
Material	Die-cast aluminum
Finish	White polyester powder coat
Input Power	<ul style="list-style-type: none"> • 12 V DC (TSAH0631-1, TSAH0633-1) • 24 V AC (TSAH0631-2, TSAH0633-2) • 220 V AC (TSAH0631-4, TSAH0633-4) • PoE (IEEE 802.3at Class 4 PoE Plus compliant) (TSAH0630-5, TSAH0631-5, TSAH0633-5) • PoE (48 V DC) (TSAH0633-9)
Power Consumption	<ul style="list-style-type: none"> • Heater (24 V AC): 6 W (250 mA) • Heater (220 V AC): 5.3 W (23 mA) • Heater (12 V DC): 4.2 W (350 mA) • Blower: 1.68 W (140 mA)
Network Interface	<ul style="list-style-type: none"> • RJ-45 × 2 (PoE input/data output) (TSAH0630-5, TSAH0631-5, TSAH0633-5) • RJ-45 × 2 (PoE input/PoE output) (TSAH0633-9)
Dimensions (W × H × L)	145 mm × 109 mm × 406 mm (5.71 in × 4.29 in × 15.98 in)
Window Viewing Area (W × H)	92 mm × 76 mm (3.62 in × 2.99 in)
Window Thickness	2 mm (0.08 in), tempered glass
Internal Usable Size (W × H × L)	<ul style="list-style-type: none"> • 100 mm × 80 mm × 335 mm (3.94 in × 3.15 in × 13.19 in) (TSAH0630) • 100 mm × 80 mm × 250 mm (3.94 in × 3.15 in × 9.84 in) (TSAH0631-1, TSAH0631-2, TSAH0631-4, TSAH0633-1, TSAH0633-2, TSAH0633-4, TSAH0633-9) • 100 mm × 80 mm × 280 mm (3.94 in × 3.15 in × 11.02 in) (TSAH0630-5, TSAH0631-5, TSAH0633-5)
Heater Control	On at 15 °C ± 3 °C (59 °F ± 5 °F), off at 25 °C ± 3 °C (77 °F ± 5 °F) (TSAH0631-1, TSAH0631-2, TSAH0631-4, TSAH0633-1, TSAH0633-2, TSAH0633-4, TSAH0631-5, TSAH0633-5, TSAH0633-9)
Blower Control	On at 40 °C ± 3 °C (104 °F ± 5 °F), off at 30 °C ± 3 °C (86 °F ± 5 °F) (TSAH0633-1, TSAH0633-2, TSAH0633-4, TSAH0633-5, TSAH0633-9)
Operating Ambient Temperature	-40 °C to 50 °C (-40 °F to 122 °F)
Related Products	<ul style="list-style-type: none"> • TSAM0165: Cable and Adaptor Managed Wall Housing Bracket • TSAM0187: Cable Managed Pendant Mount Bracket • TSAM0308: Pole Mount Bracket
Weight	3.6 kg (7.94 lb)
Certifications	CE, FCC, RoHS

*Design and specifications are subject to change without prior notice.

TSAH0730

IP66 Extruded Side Opening Camera Housing

Empty IP66 side opening camera housing, aluminum construction, built-in sunshield, internal usable size (W × H × L): 95 mm × 70 mm × 260 mm



Features

- IP66, NEMA-4X enclosure rating
- Designed for indoor and outdoor applications
- Input power: 12 V DC/24 V AC/220 V AC (available) or PoE (upgradable)
- Built-in heater and blower (optional)
- Adjustable sliding camera tray
- Cable entry glands and mounting holes on back of housing
- Extruded aluminum body and sunshield; injection molded ABS plastic end caps
- Hinged side opening for easy installation and camera setup

Available Models

Model	Heater	Blower	Input Power
TSAH0730			
TSAH0731-1	+		12 V DC
TSAH0731-2	+		24 V AC
TSAH0731-4	+		220 V AC
TSAH0733-1	+	+	12 V DC
TSAH0733-2	+	+	24 V AC
TSAH0733-4	+	+	220 V AC
TSAH0733-9	+	+	PoE

Tech Specs

Model	TSAH0730
Type	Indoor/Outdoor, side opening
Protection Rating	IP66, NEMA-4X enclosure rating
Material	Extruded aluminum body and sunshield; injection molded ABS plastic end caps

Model	TSAH0730
Finish	Beige polyester powder coat
Input Power	<ul style="list-style-type: none"> • 12 V DC (TSAH0731-1, TSAH0733-1) • 24 V AC (TSAH0731-2, TSAH0733-2) • 220 V AC (TSAH0731-4, TSAH0733-4) • PoE (48 V DC) (TSAH0733-9)
Power Consumption	<ul style="list-style-type: none"> • Heater (24 V AC): 6 W (250 mA) • Heater (220 V AC): 5.3 W (23 mA) • Heater (12 V DC): 4.2 W (350 mA) • Blower: 1.68 W (140 mA)
Network Interface	RJ-45 × 2 (PoE input/PoE output) (TSAH0733-9)
Dimensions (W × H × L)	147 mm × 115 mm × 377 mm (3.74 in × 2.76 in × 7.87 in)
Window Viewing Area (W × H)	75 mm × 75 mm (2.95 in × 2.95 in)
Window Thickness	2 mm (0.08 in), tempered glass
Internal Usable Size (W × H × L)	<ul style="list-style-type: none"> • 95 mm × 70 mm × 260 mm (3.74 in × 2.76 in × 10.24 in) (TSAH0730) • 95 mm × 70 mm × 200 mm (3.74 in × 2.76 in × 7.87 in) (TSAH0731-1, TSAH0731-2, TSAH0731-4, TSAH0733-1, TSAH0733-2, TSAH0733-4, TSAH0733-9)
Heater Control	On at 15 °C ± 3 °C (59 °F ± 5 °F), off at 25 °C ± 3 °C (77 °F ± 5 °F) (TSAH0731-1, TSAH0731-2, TSAH0731-4, TSAH0733-1, TSAH0733-2, TSAH0733-4, TSAH0733-9)
Blower Control	On at 40 °C ± 3 °C (104 °F ± 5 °F), off at 30 °C ± 3 °C (86 °F ± 5 °F) (TSAH0733-1, TSAH0733-2, TSAH0733-4, TSAH0733-9)
Operating Ambient Temperature	-20 °C to 50 °C (-4 °F to 122 °F)
Related Products	-
Weight	2.5 kg (5.51 lb)
Certifications	CE, FCC, RoHS

*Design and specifications are subject to change without prior notice.

TSAH0830

IP66 Extruded Side Opening Camera Housing

Empty IP66 side opening camera housing, aluminum construction, internal usable size (W × H × L): 100 mm × 75 mm × 260 mm



Features

- IP66, NEMA-4X enclosure rating
- Designed for indoor and outdoor applications
- Input power: 12 V DC/24 V AC/220 V AC (available) or PoE (upgradable)
- Built-in heater and blower (optional)
- Adjustable sliding camera tray
- Cable entry glands and mounting holes on bottom of housing
- Extruded aluminum body and sunshield; die-cast aluminum end caps
- Hinged side opening for easy installation and camera setup
- Bundled internal cable managed bracket

Available Models

Model	Heater	Blower	Input Power
TSAH0830			
TSAH0831-1	+		12 V DC
TSAH0831-2	+		24 V AC
TSAH0831-4	+		220 V AC
TSAH0833-1	+	+	12 V DC
TSAH0833-2	+	+	24 V AC
TSAH0833-4	+	+	220 V AC
TSAH0833-9	+	+	PoE

Tech Specs

Model	TSAH0830
Type	Indoor/Outdoor, side opening
Protection Rating	IP66, NEMA-4X enclosure rating

Model	TSAH0830
Material	Extruded aluminum body and sunshield; die-cast aluminum end caps
Finish	Beige polyester powder coat
Input Power	<ul style="list-style-type: none"> • 12 V DC (TSAH0831-1, TSAH0833-1) • 24 V AC (TSAH0831-2, TSAH0833-2) • 220 V AC (TSAH0831-4, TSAH0833-4) • PoE (48 V DC) (TSAH0833-9)
Power Consumption	<ul style="list-style-type: none"> • Heater (24 V AC): 6 W (250 mA) • Heater (220 V AC): 5.3 W (23 mA) • Heater (12 V DC): 4.2 W (350 mA) • Blower: 1.68 W (140 mA)
Network Interface	RJ-45 × 2 (PoE input/PoE output) (TSAH0833-9)
Dimensions (W × H × L)	138 mm × 117 mm × 375 mm (5.43 in × 4.60 in × 14.76 in)
Window Viewing Area (W × H)	75 mm × 75 mm (2.95 in × 2.95 in)
Window Thickness	2 mm (0.08 in), tempered glass
Internal Usable Size (W × H × L)	<ul style="list-style-type: none"> • 100 mm × 75 mm × 260 mm (3.94 in × 2.95 in × 10.24 in) (TSAH0830) • 100 mm × 65 mm × 220 mm (3.94 in × 2.56 in × 8.66 in) (TSAH0831-1, TSAH0831-2, TSAH0831-4, TSAH0833-1, TSAH0833-2, TSAH0833-4, TSAH0833-9)
Heater Control	On at 15 °C ± 3 °C (59 °F ± 5 °F), off at 25 °C ± 3 °C (77 °F ± 5 °F) (TSAH0831-1, TSAH0831-2, TSAH0831-4, TSAH0833-1, TSAH0833-2, TSAH0833-4, TSAH0833-9)
Blower Control	On at 40 °C ± 3 °C (104 °F ± 5 °F), off at 30 °C ± 3 °C (86 °F ± 5 °F) (TSAH0833-1, TSAH0833-2, TSAH0833-4, TSAH0833-9)
Operating Ambient Temperature	-20 °C to 50 °C (-4 °F to 122 °F)
Related Products	-
Weight	1.5 kg (3.31 lb)
Certifications	CE, FCC, RoHS

*Design and specifications are subject to change without prior notice.

TSAH0930

IP66 Cost Effective Large Camera Housing

Empty IP66 camera housing, aluminum construction, internal usable size (W × H × L): 105 mm × 100 mm × 320 mm



Features

- IP66, NEMA-4X enclosure rating
- Designed for indoor and outdoor applications
- Input power: 12 V DC/24 V AC/220 V AC (available) or PoE (upgradable)
- Built-in heater and blower (optional)
- Adjustable sliding camera tray
- Cable entry glands and mounting holes on back of housing
- Extruded aluminum body and sunshield; die-cast aluminum end caps
- Slide-out opening for easy installation and camera setup

Available Models

Model	Heater	Blower	Input Power
TSAH0930			
TSAH0931-1	+		12 V DC
TSAH0931-2	+		24 V AC
TSAH0931-4	+		220 V AC
TSAH0933-1	+	+	12 V DC
TSAH0933-2	+	+	24 V AC
TSAH0933-4	+	+	220 V AC
TSAH0930-5			PoE
TSAH0931-5	+		PoE
TSAH0933-5	+	+	PoE
TSAH0933-9	+	+	PoE

Tech Specs

Model	TSAH0930
Type	Indoor/Outdoor, slide-out opening
Protection Rating	IP66, NEMA-4X enclosure rating
Material	Extruded aluminum body and sunshield; die-cast aluminum end caps
Finish	Beige polyester powder coat
Input Power	<ul style="list-style-type: none"> • 12 V DC (TSAH0931-1, TSAH0933-1) • 24 V AC (TSAH0931-2, TSAH0933-2) • 220 V AC (TSAH0931-4, TSAH0933-4) • PoE (IEEE 802.3at Class 4 PoE Plus compliant) (TSAH0930-5, TSAH0931-5, TSAH0933-5) • PoE (48 V DC) (TSAH0933-9)
Power Consumption	<ul style="list-style-type: none"> • Heater (24 V AC): 6 W (250 mA) • Heater (220 V AC): 5.3 W (23 mA) • Heater (12 V DC): 4.2 W (350 mA) • Blower: 1.68 W (140 mA)
Network Interface	<ul style="list-style-type: none"> • RJ-45 × 2 (PoE input/data output) (TSAH0930-5, TSAH0931-5, TSAH0933-5) • RJ-45 × 2 (PoE input/PoE output) (TSAH0933-9)
Dimensions (W × H × L)	148 mm × 145 mm × 465 mm (5.83 in × 5.71 in × 18.31 in)
Window Viewing Area (W × H)	80 mm × 70 mm (3.15 in × 2.76 in)
Window Thickness	2 mm (0.08 in), tempered glass
Internal Usable Size (W × H × L)	<ul style="list-style-type: none"> • 105 mm × 100 mm × 320 mm (4.13 in × 3.94 in × 22.60 in) (TSAH0930) • 105 mm × 100 mm × 260 mm (4.13 in × 3.94 in × 10.24 in) (TSAH0931-1, TSAH0931-2, TSAH0931-4, TSAH0933-1, TSAH0933-2, TSAH0933-4, TSAH0933-9) • 105 mm × 100 mm × 250 mm (4.13 in × 3.94 in × 9.84 in) (TSAH0930-5, TSAH0931-5) • 105 mm × 100 mm × 190 mm (4.13 in × 4.94 in × 7.48 in) (TSAH0933-5)
Heater Control	On at 15 °C ± 3 °C (59 °F ± 5 °F), off at 25 °C ± 3 °C (77 °F ± 5 °F) (TSAH0931-1, TSAH0931-2, TSAH0931-4, TSAH0933-1, TSAH0933-2, TSAH0933-4, TSAH0931-5, TSAH0933-5, TSAH0933-9)
Blower Control	On at 40 °C ± 3 °C (104 °F ± 5 °F), off at 30 °C ± 3 °C (86 °F ± 5 °F) (TSAH0933-1, TSAH0933-2, TSAH0933-4, TSAH0933-5, TSAH0933-9)
Operating Ambient Temperature	-20 °C to 60 °C (-4 °F to 140 °F)
Related Products	-
Weight	2.6 kg (5.73 lb)
Certifications	CE, FCC, RoHS

*Design and specifications are subject to change without prior notice.

TSAH1030

IP66 Latched Side Opening Camera Housing

IP66 latched side opening camera housing, aluminum construction mixed with plastic covers, internal usable size (W × H × L): 85 mm × 85 mm × 300 mm



Features

- IP66, NEMA-4X enclosure rating
- Designed for indoor and outdoor applications
- Input power: 12 V DC/24 V AC/220 V AC (available) or PoE (upgradable)
- Built-in heater and blower (optional)
- Adjustable sliding camera tray
- Cable entry glands and mounting holes on bottom of housing
- Extruded aluminum body and sunshield; injection molded ABS plastic end caps
- Hinged side opening for easy installation and camera setup
- Side-mount link-lock latches for security
- Bundled internal cable managed bracket

Available Models

Model	Heater	Blower	Input Power
TSAH1030			
TSAH1031-1	+		12 V DC
TSAH1031-2	+		24 V AC
TSAH1031-4	+		220 V AC
TSAH1033-1	+	+	12 V DC
TSAH1033-2	+	+	24 V AC
TSAH1033-4	+	+	220 V AC
TSAH1033-9	+	+	PoE

Tech Specs

Model	TSAH1030
Type	Indoor/Outdoor, side opening, link-lock latches

Model	TSAH1030
Protection Rating	IP66, NEMA-4X enclosure rating
Material	Extruded aluminum body and sunshield; injection molded ABS plastic end caps
Finish	White polyester powder coat
Input Power	<ul style="list-style-type: none"> • 12 V DC (TSAH1031-1, TSAH1033-1) • 24 V AC (TSAH1031-2, TSAH1033-2) • 220 V AC (TSAH1031-4, TSAH1033-4) • PoE (48 V DC) (TSAH1033-9)
Power Consumption	<ul style="list-style-type: none"> • Heater (24 V AC): 6 W (250 mA) • Heater (220 V AC): 5.3 W (23 mA) • Heater (12 V DC): 4.2 W (350 mA) • Blower: 1.68 W (140 mA)
Network Interface	RJ-45 × 2 (PoE input/PoE output) (TSAH1033-9)
Dimensions (W × H × L)	145 mm × mm 110 × mm 414 mm (5.71 in × 4.33 in × 16.30 in)
Window Viewing Area (W × H)	75 mm × 75 mm (2.95 in × 2.95 in)
Window Thickness	2 mm (0.08 in), tempered glass
Internal Usable Size (W × H × L)	<ul style="list-style-type: none"> • 85 mm × 85 mm × 300 mm (3.35 in × 3.35 in × 11.81 in) (TSAH1030) • 85 mm × 85 mm × 240 mm (3.35 in × 3.35 in × 9.45 in) (TSAH1031-1, TSAH1031-2, TSAH1031-4) • 85 mm × 85 mm × 210 mm (3.35 in × 3.35 in × 8.27 in) (TSAH1033-1, TSAH1033-2, TSAH1033-4, TSAH1033-9)
Heater Control	On at 15 °C ± 3 °C (59 °F ± 5 °F), off at 25 °C ± 3 °C (77 °F ± 5 °F) (TSAH1031-1, TSAH1031-2, TSAH1031-4, TSAH1033-1, TSAH1033-2, TSAH1033-4, TSAH1033-9)
Blower Control	On at 40 °C ± 3 °C (104 °F ± 5 °F), off at 30 °C ± 3 °C (86 °F ± 5 °F) (TSAH1033-1, TSAH1033-2, TSAH1033-4, TSAH1033-9)
Operating Ambient Temperature	-40 to 60 °C (-40 °F to 140 °F)
Related Products	-
Weight	1.5 kg (3.31 lb)
Certifications	CE, FCC, RoHS

*Design and specifications are subject to change without prior notice.

TSAH1130

IP66 Extruded, Side Opening, Internal Cable Managed Camera Housing

Empty IP66 side opening camera housing, aluminum construction, built-in sunshield, with cable management design, internal usable size (W × H × L): 95 mm × 70 mm × 260 mm



Features

- IP66, NEMA-4X enclosure rating
- Designed for indoor and outdoor applications
- Input power: 12 V DC/24 V AC/220 V AC (available) or PoE (upgradable)
- Built-in heater and blower (optional)
- Adjustable sliding camera tray
- Cable entry glands and mounting holes on bottom of housing
- Extruded aluminum body and sunshield; injection molded ABS plastic end caps
- Hinged side opening for easy installation and camera setup
- Bundled internal cable managed bracket

Available Models

Model	Heater	Blower	Input Power
TSAH1130			
TSAH1131-1	+		12 V DC
TSAH1131-2	+		24 V AC
TSAH1131-4	+		220 V AC
TSAH1133-1	+	+	12 V DC
TSAH1133-2	+	+	24 V AC
TSAH1133-4	+	+	220 V AC
TSAH1133-9	+	+	PoE

Tech Specs

Model	TSAH1130
Type	Indoor/Outdoor, side opening
Protection Rating	IP66, NEMA-4X enclosure rating
Material	Extruded aluminum body and sunshield; injection molded ABS plastic end caps
Finish	Beige polyester powder coat
Input Power	<ul style="list-style-type: none"> • 12 V DC (TSAH1131-1, TSAH1133-1) • 24 V AC (TSAH1131-2, TSAH1133-2) • 220 V AC (TSAH1131-4, TSAH1133-4) • PoE (48 V DC) (TSAH1133-9)
Power Consumption	<ul style="list-style-type: none"> • Heater (24 V AC): 6 W (250 mA) • Heater (220 V AC): 5.3 W (23 mA) • Heater (12 V DC): 4.2 W (350 mA) • Blower: 1.68 W (140 mA)
Network Interface	RJ-45 × 2 (PoE input/PoE output) (TSAH1133-9)
Dimensions (W × H × L)	147 mm × 115 mm × 377 mm (5.79 in × 4.53 in × 14.84 in)
Window Viewing Area (W × H)	75 mm × 75 mm (2.95 in × 2.95 in)
Window Thickness	2 mm (0.08 in), tempered glass
Internal Usable Size (W × H × L)	<ul style="list-style-type: none"> • 95 mm × 70 mm × 260 mm (3.74 in × 2.76 in × 10.24 in) (TSAH1130) • 95 mm × 70 mm × 200 mm (3.74 in × 2.76 in × 7.87 in) (TSAH1131-1, TSAH1131-2, TSAH1131-4, TSAH1133-1, TSAH1133-2, TSAH1133-4, TSAH1133-9)
Heater Control	On at 15 °C ± 3 °C (59 °F ± 5 °F), off at 25 °C ± 3 °C (77 °F ± 5 °F) (TSAH1131-1, TSAH1131-2, TSAH1131-4, TSAH1133-1, TSAH1133-2, TSAH1133-4, TSAH1133-9)
Blower Control	On at 40 °C ± 3 °C (104 °F ± 5 °F), off at 30 °C ± 3 °C (86 °F ± 5 °F) (TSAH1133-1, TSAH1133-2, TSAH1133-4, TSAH1133-9)
Operating Ambient Temperature	-40 to 60 °C (-40 °F to 140 °F)
Related Products	-
Weight	2.5 kg (5.51 lb)
Certifications	CE, FCC, RoHS

*Design and specifications are subject to change without prior notice.

TSAH1230

IP66 Latched Side Opening Camera Housing

IP66 latched side opening camera housing, aluminum construction mixed with plastic covers, internal usable size (W × H × L): 85 mm × 85 mm × 300 mm



Features

- IP66, NEMA-4X enclosure rating
- Bundled adjustable sliding sunshield
- Designed for indoor and outdoor applications
- Input power: 12 V DC/24 V AC/220 V AC (available) or PoE (upgradable)
- Built-in heater and blower (optional)
- Adjustable sliding camera tray
- Cable entry glands and mounting holes on bottom of housing
- Extruded aluminum body and sunshield; injection molded ABS plastic end caps
- Hinged side opening for easy installation and camera setup
- Side-mount link-lock latches for security
- Bundled internal cable managed bracket

Available Models

Model	Heater	Blower	Input Power
TSAH1230			
TSAH1231-1	+		12 V DC
TSAH1231-2	+		24 V AC
TSAH1231-4	+		220 V AC
TSAH1233-1	+	+	12 V DC
TSAH1233-2	+	+	24 V AC
TSAH1233-4	+	+	220 V AC
TSAH1233-9	+	+	PoE

Tech Specs

Model	TSAH1230
Type	Indoor/Outdoor, side opening, link-lock latches
Protection Rating	IP66, NEMA-4X enclosure rating
Material	Extruded aluminum body and sunshield; injection molded ABS plastic end caps
Finish	White polyester powder coat
Input Power	<ul style="list-style-type: none"> • 12 V DC (TSAH1231-1, TSAH1233-1) • 24 V AC (TSAH1231-2, TSAH1233-2) • 220 V AC (TSAH1231-4, TSAH1233-4) • PoE (48 V DC) (TSAH1233-9)
Power Consumption	<ul style="list-style-type: none"> • Heater (24 V AC): 6 W (250 mA) • Heater (220 V AC): 5.3 W (23 mA) • Heater (12 V DC): 4.2 W (350 mA) • Blower: 1.68 W (140 mA)
Network Interface	RJ-45 × 2 (PoE input/PoE output) (TSAH1233-9)
Dimensions (W × H × L)	145 mm × mm 110 × mm 414 mm (5.71 in × 4.33 in × 16.30 in)
Window Viewing Area (W × H)	75 mm × 75 mm (2.95 in × 2.95 in)
Window Thickness	2 mm (0.08 in), tempered glass
Internal Usable Size (W × H × L)	<ul style="list-style-type: none"> • 85 mm × 85 mm × 300 mm (3.35 in × 3.35 in × 11.81 in) (TSAH1230) • 85 mm × 85 mm × 240 mm (3.35 in × 3.35 in × 9.45 in) (TSAH1231-1, TSAH1231-2, TSAH1231-4) • 85 mm × 85 mm × 210 mm (3.35 in × 3.35 in × 8.27 in) (TSAH1233-1, TSAH1233-2, TSAH1233-4, TSAH1233-9)
Heater Control	On at 15 °C ± 3 °C (59 °F ± 5 °F), off at 25 °C ± 3 °C (77 °F ± 5 °F) (TSAH1231-1, TSAH1231-2, TSAH1231-4, TSAH1233-1, TSAH1233-2, TSAH1233-4, TSAH1233-9)
Blower Control	On at 40 °C ± 3 °C (104 °F ± 5 °F), off at 30 °C ± 3 °C (86 °F ± 5 °F) (TSAH1233-1, TSAH1233-2, TSAH1233-4, TSAH1233-9)
Operating Ambient Temperature	-40 to 60 °C (-40 °F to 140 °F)
Related Products	-
Weight	1.5 kg (3.31 lb)
Certifications	CE, FCC, RoHS

*Design and specifications are subject to change without prior notice.

TSAH1330

IP66/IP67 Side Opening Die-cast Aluminum Camera Housing

Empty IP66/IP67 camera housing, die-cast aluminum construction, internal usable size (W × H × L): 100 mm × 70 mm × 350 mm



Features

- IP66/IP67, NEMA-4X/NEMA-6 enclosure rating
- Designed for indoor and outdoor applications
- Input power: 12 V DC/24 V AC/220 V AC (available) or PoE (upgradable)
- Built-in heater and blower (optional)
- Adjustable sliding camera tray
- Cable entry glands and mounting holes on bottom of housing
- Die-cast aluminum construction
- Hinged side opening for easy installation and camera setup
- Bundled internal cable managed bracket

Available Models

Model	Heater	Blower	Input Power
TSAH1330			
TSAH1331-1	+		12 V DC
TSAH1331-2	+		24 V AC
TSAH1331-4	+		220 V AC
TSAH1333-1	+	+	12 V DC
TSAH1333-2	+	+	24 V AC
TSAH1333-4	+	+	220 V AC
TSAH1330-5			PoE
TSAH1331-5	+		PoE
TSAH1333-5	+	+	PoE
TSAH1333-9	+	+	PoE

Tech Specs

Model	TSAH1330
Type	Indoor/Outdoor, side opening
Protection Rating	IP66/IP67, NEMA-4X/NEMA-6 enclosure rating
Material	Die-cast aluminum
Finish	Black polyester powder coat
Input Power	<ul style="list-style-type: none"> • 12 V DC (TSAH1331-1, TSAH1333-1) • 24 V AC (TSAH1331-2, TSAH1333-2) • 220 V AC (TSAH1331-4, TSAH1333-4) • PoE (IEEE 802.3at Class 4 PoE Plus compliant) (TSAH1330-5, TSAH1331-5, TSAH1333-5) • PoE (48 V DC) (TSAH1333-9)
Power Consumption	<ul style="list-style-type: none"> • Heater (24 V AC): 6 W (250 mA) • Heater (220 V AC): 5.3 W (23 mA) • Heater (12 V DC): 4.2 W (350 mA) • Blower: 1.68 W (140 mA)
Network Interface	<ul style="list-style-type: none"> • RJ-45 × 2 (PoE input/data output) (TSAH1330-5, TSAH1331-5, TSAH1333-5) • RJ-45 × 2 (PoE input/PoE output) (TSAH1333-9)
Dimensions (W × H × L)	155 mm × 110 mm × 400 mm (6.10 in × 4.33 in × 15.75 in)
Window Viewing Area (W × H)	58 mm × 80 mm (2.28 in × 3.15 in)
Window Thickness	2 mm (0.08 in), tempered glass
Internal Usable Size (W × H × L)	<ul style="list-style-type: none"> • 100 mm × 70 mm × 350 mm (3.94 in × 2.76 in × 13.78 in) (TSAH1330) • 100 mm × 70 mm × 310 mm (3.94 in × 2.76 in × 12.20 in) (TSAH1331-1, TSAH1331-2, TSAH1331-4, TSAH1333-1, TSAH1333-2, TSAH1333-4, TSAH1333-9) • 100 mm × 70 mm × 200 mm (3.94 in × 2.76 in × 7.87 in) (TSAH1330-5, TSAH1331-5, TSAH1333-5)
Heater Control	On at 15 °C ± 3 °C (59 °F ± 5 °F), off at 25 °C ± 3 °C (77 °F ± 5 °F) (TSAH1331-1, TSAH1331-2, TSAH1331-4, TSAH1333-1, TSAH1333-2, TSAH1333-4, TSAH1333-5, TSAH1333-5, TSAH1333-9)
Blower Control	On at 40 °C ± 3 °C (104 °F ± 5 °F), off at 30 °C ± 3 °C (86 °F ± 5 °F) (TSAH1333-1, TSAH1333-2, TSAH1333-4, TSAH1333-5, TSAH1333-9)
Operating Ambient Temperature	-20 °C to 50 °C (-4 °F to 122 °F)
Related Products	-
Weight	2.5 kg (5.51 lb)
Certifications	CE, FCC, RoHS

*Design and specifications are subject to change without prior notice.

TSAH0143

In Ceiling Dome Housing

6-inch, in ceiling, die-cast aluminum construction, dome housing



Model	TSAH0143
Operating Ambient Temperature	-10 °C to 50 °C (14 °F to 122 °F)
Bubble	2 mm (0.08 in)
Related Products	-
Weight	-
Certifications	CE, FCC, RoHS

*Design and specifications are subject to change without prior notice.

Features

- 6-inch polycarbonate dome bubble
- Designed for indoor applications
- Die-cast aluminum construction
- Dual wall construction strengthens the heat insulation
- Built-in heater and blower (optional)
- Included safety wire
- Resistant to 1000 hours of salt fog testing (according ISO9227)
- Clear or smoked dome bubble (available)
- In ceiling hole diameter: 225 mm (8.86 in)

Tech Specs

Model	TSAH0143
Type	6-inch, indoor, dome housing
Protection Rating	-
Material	Die-cast aluminum, polycarbonate dome bubble
Finish	White polyester powder coat
Input Power	12 V DC
Power Consumption	12 W maximum
Network Interface	-
Dimensions (Ø × H)	250 mm × 257 mm (9.84 in × 10.12 in)
Internal Usable Size (W × H × L)	Contact us
Heater Control	On at 5 °C ± 3 °C (41 °F ± 5 °F), off at 15 °C ± 3 °C (59 °F ± 5 °F) (optional)
Blower Control	On at 40 °C ± 3 °C (104 °F ± 5 °F), off at 30 °C ± 3 °C (86 °F ± 5 °F) (optional)

TSAH0343

IP66 Dome Housing

6-inch, IP66, IK10 vandal resistant, die-cast aluminum construction, dome housing



Model	TSAH0343
Blower Control	On at 40 °C ± 3 °C (104 °F ± 5 °F), off at 30 °C ± 3 °C (86 °F ± 5 °F) (optional)
Operating Ambient Temperature	-40 °C to 50 °C (-40 °F to 122 °F)
Bubble	2 mm (0.08 in), clear or smoked (available)
Related Products	-
Weight	-
Certifications	CE, FCC, RoHS, IP66, IK10

*Design and specifications are subject to change without prior notice.

Features

- 6-inch polycarbonate dome bubble
- Designed for indoor and outdoor applications
- Die-cast aluminum construction
- IP66, NEMA-4X enclosure rating
- IK10 (20J) vandal resistant
- Dual wall construction strengthens the heat insulation
- Built-in heater and blower (optional)
- Included safety wire
- Resistant to 1000 hours of salt fog testing (according ISO9227)
- Internal adjustable support for camera
- Clear or smoked dome bubble (available)

Tech Specs

Model	TSAH0343
Type	6-inch, indoor/outdoor, dome housing
Protection Rating	<ul style="list-style-type: none"> • IP66, NEMA-4X enclosure rating • IK10 (20J) vandal resistant
Material	Die-cast aluminum, polycarbonate dome bubble
Finish	Beige polyester powder coat
Input Power	12 V DC
Power Consumption	12 W maximum
Network Interface	-
Dimensions (Ø × H)	220 mm × 336 mm (8.66 in × 13.23 in)
Internal Usable Size (W × H × L)	Contact us
Heater Control	On at 5 °C ± 3 °C (41 °F ± 5 °F), off at 15 °C ± 3 °C (59 °F ± 5 °F) (optional)

TSAH0443

IP66 Dome Housing

7-inch, IP66, IK10 vandal resistant, die-cast aluminum construction, dome housing



Features

- 7-inch polycarbonate dome bubble
- Designed for indoor and outdoor applications
- Die-cast aluminum construction
- IP66, NEMA-4X enclosure rating
- IK10 (20J) vandal resistant
- Dual wall construction strengthens the heat insulation
- Built-in heater and blower (optional)
- Included safety wire
- Resistant to 1000 hours of salt fog testing (according ISO9227)
- Internal adjustable support for camera
- Clear or smoked dome bubble (available)

Tech Specs

Model	TSAH0443
Type	7-inch, indoor/outdoor, dome housing
Protection Rating	<ul style="list-style-type: none"> • IP66, NEMA-4X enclosure rating • IK10 (20J) vandal resistant
Material	Die-cast aluminum, polycarbonate dome bubble
Finish	Beige polyester powder coat
Input Power	12 V DC
Power Consumption	12 W maximum
Network Interface	-
Dimensions (Ø × H)	275 mm × 431 mm (10.83 in × 16.97 in)
Internal Usable Size (W × H × L)	Contact us
Heater Control	On at 5 °C ± 3 °C (41 °F ± 5 °F), off at 15 °C ± 3 °C (59 °F ± 5 °F) (optional)

Model	TSAH0443
Blower Control	On at 40 °C ± 3 °C (104 °F ± 5 °F), off at 30 °C ± 3 °C (86 °F ± 5 °F) (optional)
Operating Ambient Temperature	-40 °C to 50 °C (-40 °F to 122 °F)
Bubble	2 mm (0.08 in), clear or smoked (available)
Related Products	-
Weight	-
Certifications	CE, FCC, RoHS, IP66, IK10

*Design and specifications are subject to change without prior notice.

TSAH0543-6

IP68 Dome Housing with Nitrogen Pressurized

7-inch IP68, IK10 vandal resistant, die-cast aluminum construction, dome housing with nitrogen pressurized



Features

- 7-inch polycarbonate dome bubble
- Designed for indoor and outdoor applications
- Die-cast aluminum construction
- IP68, NEMA-6P enclosure rating
- IK10 (20J) vandal resistant
- Dual wall construction strengthens the heat insulation
- Built-in heater and blower (optional)
- Included safety wire
- Resistant to 1000 hours of salt fog testing (according ISO9227)
- Nitrogen pressurized
- Clear or smoked dome bubble (available)

Tech Specs

Model	TSAH0543-6
Type	7-inch, indoor/outdoor, nitrogen pressurized, dome housing
Protection Rating	<ul style="list-style-type: none"> • IP68, NEMA-6P enclosure rating • IK10 (20J) vandal resistant
Material	Die-cast aluminum, polycarbonate dome bubble
Finish	Beige polyester powder coat
Input Power	12 V DC
Power Consumption	12 W maximum
Network Interface	-
Dimensions (Ø × H)	275 mm × 431 mm (10.83 in × 16.97 in)
Internal Usable Size (W × H × L)	Contact us

Model	TSAH0543-6
Heater Control	On at 5 °C ± 3 °C (41 °F ± 5 °F), off at 15 °C ± 3 °C (59 °F ± 5 °F) (optional)
Blower Control	On at 40 °C ± 3 °C (104 °F ± 5 °F), off at 30 °C ± 3 °C (86 °F ± 5 °F) (optional)
Operating Ambient Temperature	-40 °C to 50 °C (-40 °F to 122 °F)
Bubble	2 mm (0.08 in), clear or smoked (available)
Related Products	-
Weight	-
Certifications	CE, FCC, RoHS, IP68, IK10

*Design and specifications are subject to change without prior notice.

TSAH0643

IP66 Dome Housing

9-inch, IP66, IK10 vandal resistant, die-cast aluminum construction, dome housing



Model	TSAH0643
Blower Control	On at 40 °C ± 3 °C (104 °F ± 5 °F), off at 30 °C ± 3 °C (86 °F ± 5 °F) (optional)
Operating Ambient Temperature	-40 °C to 50 °C (-40 °F to 122 °F)
Bubble	2 mm (0.08 in)
Related Products	-
Weight	-
Certifications	CE, FCC, RoHS, IP66, IK10

*Design and specifications are subject to change without prior notice.

Features

- 9-inch acrylic dome bubble
- Designed for indoor and outdoor applications
- Die-cast aluminum construction
- IP66, NEMA-4X enclosure rating
- IK10 (20J) vandal resistant
- Dual wall construction strengthens the heat insulation
- Built-in heater and blower (optional)
- Included safety wire
- Resistant to 1000 hours of salt fog testing (according ISO9227)
- Internal adjustable support for camera

Tech Specs

Model	TSAH0643
Type	9-inch, indoor/outdoor, dome housing
Protection Rating	<ul style="list-style-type: none"> • IP66, NEMA-4X enclosure rating • IK10 (20J) vandal resistant
Material	Die-cast aluminum, acrylic dome bubble
Finish	Beige polyester powder coat
Input Power	12 V DC
Power Consumption	12 W maximum
Network Interface	-
Dimensions (Ø × H)	310 mm × 428 mm (12.20 in × 16.85 in)
Internal Usable Size (W × H × L)	Contact us
Heater Control	On at 5 °C ± 3 °C (41 °F ± 5 °F), off at 15 °C ± 3 °C (59 °F ± 5 °F) (optional)

TSAH0110

IP68 Side Opening Die-cast Aluminum Camera Housing with 80 m IR LED Illuminator

IP68 side opening camera housing, die-cast aluminum construction, IR illuminator with distance up to 80 m, internal usable size (W × H × L): 100 mm × 80 mm × 320 mm, built-in dual glasses



Features

- IP68, NEMA-6P enclosure rating
- Designed for indoor and outdoor applications
- Input power: 12 V DC or PoE (IEEE 802.3at Class 4 PoE Plus compliant)
- Built-in heater and blower (optional)
- Built-in IR illuminator with distance up to 100 m (328 ft) (input power: 12 V DC)
- Height adjustable sliding camera tray
- Cable entry glands and mounting holes on bottom of housing
- Die-cast aluminum construction
- High impact resistance
- Hinged side opening for easy installation and camera setup
- Bundled internal cable managed bracket

Available Models

Model	Heater	Blower	Input Power
TSAH0110			
TSAH0113-1	+	+	12 V DC
TSAH0113-5	+	+	PoE

Tech Specs

Model	TSAH0110
Type	Indoor/Outdoor, side opening
Protection Rating	IP68, NEMA-6P enclosure rating

Model	TSAH0110
Material	Die-cast aluminum
Finish	White polyester powder coat
Input Power	<ul style="list-style-type: none"> • 12 V DC (TSAH0113-1) • PoE (IEEE 802.3at Class 4 PoE Plus compliant) (TSAH0113-5)
Power Consumption	<ul style="list-style-type: none"> • Heater (24 V AC): 6 W (250 mA) • Heater (220 V AC): 5.3 W (23 mA) • Heater (12 V DC): 4.2 W (350 mA) • Blower: 1.68 W (140 mA) • IR LEDs: 8 W
Network Interface	RJ-45 × 2 (PoE input/data output) (TSAH0113-5)
Dimensions (W × H × L)	145 mm × 109 mm × 406 mm (5.71 in × 4.29 in × 15.98 in)
Window Viewing Area (W × H)	92 mm × 76 mm (3.62 in × 2.99 in)
Window Thickness	2 mm (0.08 in), dual tempered glasses
Internal Usable Size (W × H × L)	<ul style="list-style-type: none"> • 100 mm × 80 mm × 320 mm (3.94 in × 3.15 in × 12.6 in) (TSAH0110) • 100 mm × 80 mm × 235 mm (3.94 in × 3.15 in × 9.25 in) (TSAH0113-1) • 100 mm × 80 mm × 265 mm (3.94 in × 3.15 in × 10.43 in) (TSAH0113-5)
Heater Control	On at 15 °C ± 3 °C (59 °F ± 5 °F), off at 25 °C ± 3 °C (77 °F ± 5 °F) (TSAH0113-1, TSAH0113-5)
Blower Control	On at 40 °C ± 3 °C (104 °F ± 5 °F), off at 30 °C ± 3 °C (86 °F ± 5 °F) (TSAH0113-1, TSAH0113-5)
Operating Ambient Temperature	-40 °C to 50 °C (-40 °F to 122 °F)
Related Products	<ul style="list-style-type: none"> • TSAM0165: Cable and Adaptor Managed Wall Housing Bracket • TSAM0187: Cable Managed Pendant Mount Bracket • TSAM0308: Pole Mount Bracket
Weight	3.7 kg (8.16 lb)
Certifications	CE, FCC, RoHS
IR Wavelength	850 nm
IR Illumination Distance	80 m to 100 m (262.47 ft to 328 ft)
IR Beam Angle	30°
IR LEDs	6 pieces
IR LED Lifetime	20,000 hours
IR Light On/Off	On when illumination is lower than 4 lux

*Design and specifications are subject to change without prior notice.

TSAH0210

IP68 Side Opening Die-cast Aluminum Camera Housing with 50 m to 70 m IR LED Illuminator

IP68 side opening camera housing, die-cast aluminum construction, IR illuminator with distance up to 50 m to 70 m, internal usable size (W × H × L): 100 mm × 80 mm × 320 mm, built-in dual glasses



Features

- IP68, NEMA-6P enclosure rating
- Designed for indoor and outdoor applications
- Input power: 12 V DC or PoE (IEEE 802.3at Class 4 PoE Plus compliant)
- Built-in heater and blower (optional)
- Built-in IR illuminator with distance up to 50 m to 70 m (164.04 ft to 229.66 ft) (input power: 12 V DC)
- Adjustable sliding camera tray
- Cable entry glands and mounting holes on bottom of housing
- Die-cast aluminum construction
- High impact resistance
- Hinged side opening for easy installation and camera setup
- Bundled internal cable managed bracket

Available Models

Model	Heater	Blower	Input Power
TSAH0210			
TSAH0213-1	+	+	12 V DC
TSAH0213-5	+	+	PoE

Tech Specs

Model	TSAH0210
Type	Indoor/Outdoor, side opening

Model	TSAH0210
Protection Rating	IP68, NEMA-6P enclosure rating
Material	Die-cast aluminum
Finish	White polyester powder coat
Input Power	<ul style="list-style-type: none"> • 12 V DC (TSAH0213-1) • PoE (IEEE 802.3at Class 4 PoE Plus compliant) (TSAH0213-5)
Power Consumption	<ul style="list-style-type: none"> • Heater (24 V AC): 6 W (250 mA) • Heater (220 V AC): 5.3 W (23 mA) • Heater (12 V DC): 4.2 W (350 mA) • Blower: 1.68 W (140 mA) • IR LEDs: 5 W
Network Interface	RJ-45 × 2 (PoE in/data output) (TSAH0213-5)
Dimensions (W × H × L)	145 mm × 109 mm × 406 mm (5.71 in × 4.29 in × 15.98 in)
Window Viewing Area (W × H)	92 mm × 76 mm (3.62 in × 2.99 in)
Window Thickness	2 mm (0.08 in), dual tempered glasses
Internal Usable Size (W × H × L)	<ul style="list-style-type: none"> • 100 mm × 80 mm × 320 mm (3.94 in × 3.15 in × 12.6 in) (TSAH0210) • 100 mm × 80 mm × 235 mm (3.94 in × 3.15 in × 9.25 in) (TSAH0213-1) • 100 mm × 80 mm × 265 mm (3.94 in × 3.15 in × 10.43 in) (TSAH0213-5)
Heater Control	On at 15 °C ± 3 °C (59 °F ± 5 °F), off at 25 °C ± 3 °C (77 °F ± 5 °F) (TSAH0213-1, TSAH0213-5)
Blower Control	On at 40 °C ± 3 °C (104 °F ± 5 °F), off at 30 °C ± 3 °C (86 °F ± 5 °F) (TSAH0213-1, TSAH0213-5)
Operating Ambient Temperature	-40 °C to 50 °C (-40 °F to 122 °F)
Related Products	<ul style="list-style-type: none"> • TSAM0165: Cable and Adaptor Managed Wall Housing Bracket • TSAM0187: Cable Managed Pendant Mount Bracket • TSAM0308: Pole Mount Bracket
Weight	3.7 kg (8.16 lb)
Certifications	CE, FCC, RoHS
IR Wavelength	850 nm
IR Illumination Distance	50 m to 70 m (164.04 ft to 229.66 ft)
IR Beam Angle	30°
IR LEDs	24 pieces
IR LED Lifetime	20,000 hours
IR Light On/Off	On when illumination is lower than 4 lux

*Design and specifications are subject to change without prior notice.

TSAH0310

IP66 Side Opening Camera Housing with 40 m IR LED Illuminator

IP66 side opening camera housing, with sunshield, IR illuminator with distance up to 40 m, internal usable size (W × H × L): 95 mm × 70 mm × 260 mm, built-in dual glasses



Features

- IP66, NEMA-4X enclosure rating
- Designed for indoor and outdoor applications
- Input power: 12 V DC/24 V AC/220 V AC (available)
- Built-in heater and blower (optional)
- Built-in IR illuminator with distance up to 40 m (131.23 ft) (input power: 12 V DC)
- Adjustable sliding camera tray
- Cable entry glands and mounting holes on back of housing
- Extruded aluminum body and sunshield; injection molded ABS plastic end caps
- Hinged side opening for easy installation and camera setup
- Bundled internal cable managed bracket

Available Models

Model	Heater	Blower	Input Power
TSAH0310			
TSAH0313-1	+	+	12 V DC
TSAH0313-2	+	+	24 V AC
TSAH0313-4	+	+	220 V AC

Tech Specs

Model	TSAH0310
Type	Indoor/Outdoor, side opening
Protection Rating	IP66, NEMA-4X enclosure rating

Model	TSAH0310
Material	Extruded aluminum body and sunshield; injection molded ABS plastic end caps
Finish	Beige polyester powder coat
Input Power	<ul style="list-style-type: none"> • 12 V DC (TSAH0313-1) • 24 V AC (TSAH0313-2) • 220 V AC (TSAH0313-4)
Power Consumption	<ul style="list-style-type: none"> • Heater (24 V AC): 6 W (250 mA) • Heater (220 V AC): 5.3 W (23 mA) • Heater (12 V DC): 4.2 W (350 mA) • Blower: 1.68 W (140 mA) • IR LEDs: 4 W
Network Interface	-
Dimensions (W × H × L)	147 mm × 115 mm × 377 mm (5.79 in × 4.53 in × 14.84 in)
Window Viewing Area (W × H)	75 mm × 75 mm (2.95 in × 2.95 in)
Window Thickness	2 mm (0.08 in), dual tempered glasses
Internal Usable Size (W × H × L)	<ul style="list-style-type: none"> • 95 mm × 70 mm × 260 mm (3.74 in × 2.76 in × 10.23 in) (TSAH0310) • 95 mm × 70 mm × 200 mm (3.74 in × 2.76 in × 7.87 in) (TSAH0313-1, TSAH0313-2, TSAH0313-4)
Heater Control	On at 15 °C ± 3 °C (59 °F ± 5 °F), off at 25 °C ± 3 °C (77 °F ± 5 °F) (TSAH0313-1, TSAH0313-2, TSAH0313-4)
Blower Control	On at 40 °C ± 3 °C (104 °F ± 5 °F), off at 30 °C ± 3 °C (86 °F ± 5 °F) (TSAH0313-1, TSAH0313-2, TSAH0313-4)
Operating Ambient Temperature	-20 °C to 50 °C (-4 °F to 122 °F)
Related Products	-
Weight	2.6 kg (5.73 lb)
Certifications	CE, FCC, RoHS
IR Wavelength	850 nm
IR Illumination Distance	40 m (131.23 ft) or 50 m to 70 m (164.04 ft to 229.66 ft) (available)
IR Beam Angle	30°
IR LEDs	42 pieces, (Ø) 8 mm LED
IR LED Lifetime	> 25,000 hours
IR Light On/Off	On when illumination is lower than 4 lux

*Design and specifications are subject to change without prior notice.

TSAH0410

IP66 Side Opening Camera Housing with 50 m to 70 m IR LED Illuminator

IP66 side opening camera housing, with sunshield, IR illuminator with distance up to 50 m to 70 m, internal usable size (W × H × L): 95 mm × 70 mm × 260 mm, built-in dual glasses



Features

- IP66, NEMA-4X enclosure rating
- Designed for indoor and outdoor applications
- Input power: 12 V DC/24 V AC/220 V AC (available)
- Built-in heater and blower (optional)
- Built-in IR illuminator with distance up to 50 m to 70 m (164.04 ft to 229.66 ft) (input power: 12 V DC)
- Adjustable sliding camera tray
- Cable entry glands and mounting holes on back of housing
- Extruded aluminum body and sunshield; injection molded ABS plastic end caps
- Hinged side opening for easy installation and camera setup

Available Models

Model	Heater	Blower	Input Power
TSAH0410			
TSAH0413-1	+	+	12 V DC
TSAH0413-2	+	+	24 V AC
TSAH0413-4	+	+	220 V AC

Tech Specs

Model	TSAH0410
Type	Indoor/Outdoor, side opening
Protection Rating	IP66, NEMA-4X enclosure rating

Model	TSAH0410
Material	Extruded aluminum body and sunshield; injection molded ABS plastic end caps
Finish	Beige polyester powder coat
Input Power	<ul style="list-style-type: none"> • 12 V DC (TSAH0413-1) • 24 V AC (TSAH0413-2) • 220 V AC (TSAH0413-4)
Power Consumption	<ul style="list-style-type: none"> • Heater (24 V AC): 6 W (250 mA) • Heater (220 V AC): 5.3 W (23 mA) • Heater (12 V DC): 4.2 W (350 mA) • Blower: 1.68 W (140 mA) • IR LEDs: 4 W
Network Interface	-
Dimensions (W × H × L)	147 mm × 115 mm × 377 mm (5.88 in × 4.23 in × 14.84 in)
Window Viewing Area (W × H)	75 mm × 75 mm (2.95 in × 2.95 in)
Window Thickness	2 mm (0.08 in), dual tempered glasses
Internal Usable Size (W × H × L)	<ul style="list-style-type: none"> • 95 mm × 70 mm × 260 mm (3.74 in × 2.76 in × 10.24 in) (TSAH0410) • 95 mm × 70 mm × 200 mm (3.74 in × 2.76 in × 7.87 in) (TSAH0413-1, TSAH0413-2, TSAH0413-4)
Heater Control	On at 15 °C ± 3 °C (59 °F ± 5 °F), off at 25 °C ± 3 °C (77 °F ± 5 °F) (TSAH0413-1, TSAH0413-2, TSAH0413-4)
Blower Control	On at 40 °C ± 3 °C (104 °F ± 5 °F), off at 30 °C ± 3 °C (86 °F ± 5 °F) (TSAH0413-1, TSAH0413-2, TSAH0413-4)
Operating Ambient Temperature	-20 °C to 50 °C (-4 °F to 122 °F)
Related Products	-
Weight	2.6 kg (5.73 lb)
Certifications	CE, FCC, RoHS
IR Wavelength	850 nm
IR Illumination Distance	50 m to 70 m (164.04 ft to 229.66 ft)
IR Beam Angle	30°
IR LEDs	42 pieces, (Ø) 8 mm LED
IR LED Lifetime	> 25,000 hours
IR Light On/Off	On when illumination is lower than 4 lux

*Design and specifications are subject to change without prior notice.

TSAH0510

IP66 Side Opening Camera Housing with 20 m Bucket IR LED Illuminator

IP66 side opening camera housing, with sunshield, IR illuminator with distance up to 20 m, internal usable size (W × H × L): 100 mm × 70 mm × 350 mm



Features

- IP66, NEMA-4X enclosure rating
- Designed for indoor and outdoor applications
- IR illuminator with distance up to 20 m (65.62 ft) (input power: 12 V DC)
- Input power: 12 V DC/24 V AC/220 V AC (available)
- Built-in heater and blower (optional)
- Adjustable sliding camera tray
- Cable entry glands and mounting holes on bottom of housing
- Die-cast aluminum construction
- Hinged side opening for easy installation and camera setup
- Bundled internal cable managed bracket

Available Models

Model	Heater	Blower	Input Power
TSAH0510			
TSAH0513-1	+	+	12 V DC
TSAH0513-2	+	+	24 V AC
TSAH0513-4	+	+	220 V AC

Tech Specs

Model	TSAH0510
Type	Indoor/Outdoor, side opening
Protection Rating	IP66, NEMA-4X enclosure rating
Material	Die-cast aluminum

Model	TSAH0510
Finish	Beige polyester powder coat
Input Power	<ul style="list-style-type: none"> • 12 V DC (TSAH0513-1) • 24 V AC (TSAH0513-2) • 220 V AC (TSAH0513-4)
Power Consumption	<ul style="list-style-type: none"> • Heater (24 V AC): 6 W (250 mA) • Heater (220 V AC): 5.3 W (23 mA) • Heater (12 V DC): 4.2 W (350 mA) • Blower: 1.68 W (140 mA) • IR LED (12 V DC): 2 W (1000 mA)
Network Interface	-
Dimensions (W × H × L)	155 mm × 110 mm × 400 mm (6.10 in × 4.33 in × 15.75 in)
Window Viewing Area (W × H)	58 mm × 80 mm (2.28 in × 3.15 in)
Window Thickness	2 mm (0.08 in), tempered glass
Internal Usable Size (W × H × L)	<ul style="list-style-type: none"> • 100 mm × 70 mm × 350 mm (3.93 in × 2.76 in × 13.78 in) (TSAH0510) • 100 mm × 70 mm × 310 mm (3.93 in × 2.76 in × 12.20 in) (TSAH0513-1, TSAH0513-2, TSAH0513-4)
Heater Control	On at 15 °C ± 3 °C (59 °F ± 5 °F), off at 25 °C ± 3 °C (77 °F ± 5 °F) (TSAH0513-1, TSAH0513-2, TSAH0513-4)
Blower Control	On at 40 °C ± 3 °C (104 °F ± 5 °F), off at 30 °C ± 3 °C (86 °F ± 5 °F) (TSAH0513-1, TSAH0513-2, TSAH0513-4)
Operating Ambient Temperature	-20 °C to 50 °C (-4 °F to 122 °F)
Related Products	-
Weight	2.9 kg (6.39 lb)
Certifications	CE, FCC, RoHS
IR Wavelength	850 nm
IR Illumination Distance	20 m (65.62 ft)
IR Beam Angle	60°
IR LEDs	1 piece high power IR LED
IR LED Lifetime	> 25,000 hours
IR Light On/Off	On when illumination is lower than 4 lux

*Design and specifications are subject to change without prior notice.

TSAH0610

IP66 Side Opening Camera Housing with 30 m Bucket IR LED Illuminator

IP66 side opening camera housing, with sunshield, IR illuminator with distance up to 30 m, internal usable size (W × H × L): 100 mm × 70 mm × 350 mm



Features

- IP66, NEMA-4X enclosure rating
- Designed for indoor and outdoor applications
- IR illuminator with distance up to 30 m (98.42 ft) (input power: 12 V DC)
- Input power: 12 V DC/24 V AC/220 V AC (available)
- Built-in heater and blower (optional)
- Adjustable sliding camera tray
- Cable entry glands and mounting holes on bottom of housing
- Die-cast aluminum construction
- Hinged side opening for easy installation and camera setup
- Bundled internal cable managed bracket

Available Models

Model	Heater	Blower	Input Power
TSAH0610			
TSAH0613-1	+	+	12 V DC
TSAH0613-2	+	+	24 V AC
TSAH0613-4	+	+	220 V AC

Tech Specs

Model	TSAH0610
Type	Indoor/Outdoor, side opening
Protection Rating	IP66, NEMA-4X enclosure rating
Material	Die-cast aluminum

Model	TSAH0610
Finish	Beige polyester powder coat
Input Power	<ul style="list-style-type: none"> • 12 V DC (TSAH0613-1) • 24 V AC (TSAH0613-2) • 220 V AC (TSAH0613-4)
Power Consumption	<ul style="list-style-type: none"> • Heater (24 V AC): 6 W (250 mA) • Heater (220 V AC): 5.3 W (23 mA) • Heater (12 V DC): 4.2 W (350 mA) • Blower: 1.68 W (140 mA) • IR LED (12 V DC): 2 W (1000 mA)
Network Interface	-
Dimensions (W × H × L)	155 mm × 110 mm × 400 mm (6.10 in × 4.33 in × 15.75 in)
Window Viewing Area (W × H)	58 mm × 80 mm (2.28 in × 3.15 in)
Window Thickness	2 mm (0.08 in), tempered glass
Internal Usable Size (W × H × L)	<ul style="list-style-type: none"> • 100 mm × 70 mm × 350 mm (3.94 in × 2.76 in × 13.78 in) (TSAH0610) • 100 mm × 70 mm × 310 mm (3.94 in × 2.76 in × 12.20 in) (TSAH0613-1, TSAH0613-2, TSAH0613-4)
Heater Control	On at 15 °C ± 3 °C (59 °F ± 5 °F), off at 25 °C ± 3 °C (77 °F ± 5 °F) (TSAH0613-1, TSAH0613-2, TSAH0613-4)
Blower Control	On at 40 °C ± 3 °C (104 °F ± 5 °F), off at 30 °C ± 3 °C (86 °F ± 5 °F) (TSAH0613-1, TSAH0613-2, TSAH0613-4)
Operating Ambient Temperature	-20 °C to 50 °C (-4 °F to 122 °F)
Related Products	-
Weight	2.9 kg (6.39 lb)
Certifications	CE, FCC, RoHS
IR Wavelength	850 nm
IR Illumination Distance	30 m (98.42 ft)
IR Beam Angle	45°
IR LEDs	1 piece high power IR LED
IR LED Lifetime	> 25,000 hours
IR Light On/Off	On when illumination is lower than 4 lux

*Design and specifications are subject to change without prior notice.

TSAH0710

IP66 Side Opening Camera Housing with 50 m Bucket IR LED Illuminator

IP66 side opening camera housing, with sunshield, IR illuminator with distance up to 50 m, internal usable size (W × H × L): 100 mm × 70 mm × 350 mm



Features

- IP66, NEMA-4X enclosure rating
- Designed for indoor and outdoor applications
- IR illuminator with distance up to 50 m (164 ft) (input power: 12 V DC)
- Input power: 12 V DC/24 V AC/220 V AC (available)
- Built-in heater and blower (optional)
- Adjustable sliding camera tray
- Cable entry glands and mounting holes on bottom of housing
- Die-cast aluminum construction
- Hinged side opening for easy installation and camera setup
- Bundled internal cable managed bracket

Available Models

Model	Heater	Blower	Input Power
TSAH0710			
TSAH0713-1	+	+	12 V DC
TSAH0713-2	+	+	24 V AC
TSAH0713-4	+	+	220 V AC

Tech Specs

Model	TSAH0710
Type	Indoor/Outdoor, side opening
Protection Rating	IP66, NEMA-4X enclosure rating
Material	Die-cast aluminum

Model	TSAH0710
Finish	Beige polyester powder coat
Input Power	<ul style="list-style-type: none"> • 12 V DC (TSAH0713-1) • 24 V AC (TSAH0713-2) • 220 V AC (TSAH0713-4)
Power Consumption	<ul style="list-style-type: none"> • Heater (24 V AC): 6 W (250 mA) • Heater (220 V AC): 5.3 W (23 mA) • Heater (12 V DC): 4.2 W (350 mA) • Blower: 1.68 W (140 mA) • IR LED (12 V DC): 2 W (1000 mA)
Network Interface	-
Dimensions (W × H × L)	155 mm × 110 mm × 400 mm (6.10 in × 4.33 in × 15.75 in)
Window Viewing Area (W × H)	58 mm × 80 mm (2.28 in × 3.15 in)
Window Thickness	2 mm (0.08 in), tempered glass
Internal Usable Size (W × H × L)	<ul style="list-style-type: none"> • 100 mm × 70 mm × 350 mm (3.94 in × 2.76 in × 13.78 in) (TSAH0713-4) • 100 mm × 70 mm × 310 mm (3.94 in × 2.76 in × 12.20 in) (TSAH0713-1, TSAH0713-2, TSAH0713-4)
Heater Control	On at 15 °C ± 3 °C (59 °F ± 5 °F), off at 25 °C ± 3 °C (77 °F ± 5 °F) (TSAH0713-1, TSAH0713-2, TSAH0713-4)
Blower Control	On at 40 °C ± 3 °C (104 °F ± 5 °F), off at 30 °C ± 3 °C (86 °F ± 5 °F) (TSAH0713-1, TSAH0713-2, TSAH0713-4)
Operating Ambient Temperature	-20 °C to 50 °C (-4 °F to 122 °F)
Related Products	-
Weight	2.9 kg (6.39 lb)
Certifications	CE, FCC, RoHS
IR Wavelength	850 nm
IR Illumination Distance	50 m (164.04 ft)
IR Beam Angle	15°
IR LEDs	1 piece high power IR LED
IR LED Lifetime	> 25,000 hours
IR Light On/Off	On when illumination is lower than 4 lux

*Design and specifications are subject to change without prior notice.

TSAH0810

IP66 Side Opening Camera Housing with 70 m Bucket IR LED Illuminator

IP66 side opening camera housing, with sunshield, IR illuminator with distance up to 70 m, internal usable size (W × H × L): 100 mm × 70 mm × 350 mm



Features

- IP66, NEMA-4X enclosure rating
- Designed for indoor and outdoor applications
- IR illuminator with distance up to 70 m (229.66 ft) (input power: 12 V DC)
- Input power: 12 V DC/24 V AC/220 V AC (available)
- Built-in heater and blower (optional)
- Adjustable sliding camera tray
- Cable entry glands and mounting holes on bottom of housing
- Die-cast aluminum construction
- Hinged side opening for easy installation and camera setup
- Bundled internal cable managed bracket

Available Models

Model	Heater	Blower	Input Power
TSAH0810			
TSAH0813-1	+	+	12 V DC
TSAH0813-2	+	+	24 V AC
TSAH0813-4	+	+	220 V AC

Tech Specs

Model	TSAH0810
Type	Indoor/Outdoor, side opening
Protection Rating	IP66, NEMA-4X enclosure rating
Material	Die-cast aluminum

Model	TSAH0810
Finish	Beige polyester powder coat
Input Power	<ul style="list-style-type: none"> • 12 V DC (TSAH0813-1) • 24 V AC (TSAH0813-2) • 220 V AC (TSAH0813-4)
Power Consumption	<ul style="list-style-type: none"> • Heater (24 V AC): 6 W (250 mA) • Heater (220 V AC): 5.3 W (23 mA) • Heater (12 V DC): 4.2 W (350 mA) • Blower: 1.68 W (140 mA) • IR LED (12 V DC): 2 W (1000 mA)
Network Interface	-
Dimensions (W × H × L)	155 mm × 110 mm × 400 mm (6.10 in × 4.33 in × 15.75 in)
Window Viewing Area (W × H)	58 mm × 80 mm (2.28 in × 3.15 in)
Window Thickness	2 mm (0.08 in), tempered glass
Internal Usable Size (W × H × L)	<ul style="list-style-type: none"> • 100 mm × 70 mm × 350 mm (3.94 in × 2.76 in × 13.78 in) (TSAH0810) • 100 mm × 70 mm × 310 mm (3.94 in × 2.76 in × 12.20 in) (TSAH0813-1, TSAH0813-2, TSAH0813-4)
Heater Control	On at 15 °C ± 3 °C (59 °F ± 5 °F), off at 25 °C ± 3 °C (77 °F ± 5 °F) (TSAH0813-1, TSAH0813-2, TSAH0813-4)
Blower Control	On at 40 °C ± 3 °C (104 °F ± 5 °F), off at 30 °C ± 3 °C (86 °F ± 5 °F) (TSAH0813-1, TSAH0813-2, TSAH0813-4)
Operating Ambient Temperature	-20 °C to 50 °C (-4 °F to 122 °F)
Related Products	-
Weight	2.9 kg (6.39 lb)
Certifications	CE, FCC, RoHS
IR Wavelength	850 nm
IR Illumination Distance	70 m (229.66 ft)
IR Beam Angle	8°
IR LEDs	1 piece high power IR LED
IR LED Lifetime	> 25,000 hours
IR Light On/Off	On when illumination is lower than 4 lux

*Design and specifications are subject to change without prior notice.

TSAH0910

IP66 Latched Side Opening Camera Housing with 50 m to 70 m IR LED Illuminator

IP66 latched side opening camera housing, with sunshield, IR illuminator with distance up to 50 m to 70 m, with cable management bracket design, internal usable size (W × H × L): 85 mm × 85 mm × 300 mm, built-in dual glasses



Features

- IP66, NEMA-4X enclosure rating
- Designed for indoor and outdoor applications
- Input power: 12 V DC/24 V AC/220 V AC (available)
- Built-in heater and blower (optional)
- Built-in IR illuminator with distance up to 50 m to 70 m (164.04 ft to 229.66 ft) (input power: 12 V DC)
- Adjustable sliding camera tray
- Cable entry glands and mounting holes on bottom of housing
- Extruded aluminum body and sunshield; injection molded ABS plastic end caps
- Hinged side opening for easy installation and camera setup
- Side-mount link-lock latches for security
- Bundled internal cable managed bracket

Available Models

Model	Heater	Blower	Input Power
TSAH0910			
TSAH0913-1	+	+	12 V DC
TSAH0913-2	+	+	24 V AC
TSAH0913-4	+	+	220 V AC

Tech Specs

Model	TSAH0910
Type	Indoor/Outdoor, side opening, link-lock latches
Protection Rating	IP66, NEMA-4X enclosure rating
Material	Extruded aluminum body and sunshield; injection molded ABS plastic end caps
Finish	White polyester powder coat
Input Power	<ul style="list-style-type: none"> • 12 V DC (TSAH0913-1) • 24 V AC (TSAH0913-2) • 220 V AC (TSAH0913-4)
Power Consumption	<ul style="list-style-type: none"> • Heater (24 V AC): 6 W (250 mA) • Heater (220 V AC): 5.3 W (23 mA) • Heater (12 V DC): 4.2 W (350 mA) • Blower: 1.68 W (140 mA) • IR LEDs: 4 W
Network Interface	-
Dimensions (W × H × L)	145 mm × 110 mm × 414 mm (5.71 in × 4.33 in × 16.30 in)
Window Viewing Area (W × H)	75 mm × 75 mm (2.95 in × 2.95 in)
Window Thickness	2 mm (0.08 in), dual tempered glasses
Internal Usable Size (W × H × L)	<ul style="list-style-type: none"> • 85 mm × 85 mm × 300 mm (3.35 in × 3.35 in × 11.81 in) (TSAH0910) • 85 mm × 85 mm × 210 mm (3.35 in × 3.35 in × 8.27 in) (TSAH0913-1, TSAH0913-2, TSAH0913-4)
Heater Control	On at 15 °C ± 3 °C (59 °F ± 5 °F), off at 25 °C ± 3 °C (77 °F ± 5 °F) (TSAH0913-1, TSAH0913-2, TSAH0913-4)
Blower Control	On at 40 °C ± 3 °C (104 °F ± 5 °F), off at 30 °C ± 3 °C (86 °F ± 5 °F) (TSAH0913-1, TSAH0913-2, TSAH0913-4)
Operating Ambient Temperature	-40 to 60 °C (-40 °F to 140 °F)
Related Products	-
Weight	1.6 kg (3.53 lb)
Certifications	CE, FCC, RoHS
IR Wavelength	850 nm
IR Illumination Distance	50 m to 70 m (164.04 ft to 229.66 ft)
IR Beam Angle	30°
IR LEDs	42 pieces, (Ø) 8 mm LED
IR LED Lifetime	> 25,000 hours
IR Light On/Off	On when illumination is lower than 4 lux

*Design and specifications are subject to change without prior notice.

TSAH1010

IP66 Side Opening Camera Housing with 50 m to 70 m IR LED Illuminator

IP66 side opening camera housing, with sunshield, IR illuminator with distance up to 50 m to 70 m, with cable management bracket design, internal usable size (W × H × L): 95 × 70 × 260 mm, built-in dual glasses



Features

- IP66, NEMA-4X enclosure rating
- Designed for indoor and outdoor applications
- Input power: 12 V DC/24 V AC/220 V AC (available)
- Built-in heater and blower (optional)
- Built-in IR illuminator with distance up to 50 m to 70 m (164.04 ft to 229.66 ft) (input power: 12 V DC)
- Adjustable sliding camera tray
- Cable entry glands and mounting holes on bottom of housing
- Extruded aluminum body and sunshield; injection molded ABS plastic end caps
- Hinged side opening for easy installation and camera setup
- Bundled internal cable managed bracket

Available Models

Models	Heater	Blower	Input Power
TSAH1010			
TSAH1013-1	+	+	12 V DC
TSAH1013-2	+	+	24 V AC
TSAH1013-4	+	+	220 V AC

Tech Specs

Model	TSAH1010
Type	Indoor/Outdoor, side opening

Model	TSAH1010
Protection Rating	IP66, NEMA-4X enclosure rating
Material	Extruded aluminum body and sunshield; injection molded ABS plastic end caps
Finish	Beige polyester powder coat
Input Power	<ul style="list-style-type: none"> • 12 V DC (TSAH1013-1) • 24 V AC (TSAH1013-2) • 220 V AC (TSAH1013-4)
Power Consumption	<ul style="list-style-type: none"> • Heater (24 V AC): 6 W (250 mA) • Heater (220 V AC): 5.3 W (23 mA) • Heater (12 V DC): 4.2 W (350 mA) • Blower: 1.68 W (140 mA) • IR LEDs: 4 W
Network Interface	-
Dimensions (W × H × L)	147 mm × 115 mm × 377 mm (5.79 in × 4.53 in × 14.84 in)
Window Viewing Area (W × H)	75 mm × 75 mm (2.95 in × 2.95 in)
Window Thickness	2 mm (0.08 in), dual tempered glasses
Internal Usable Size (W × H × L)	<ul style="list-style-type: none"> • 95 mm × 70 mm × 260 mm (3.74 in × 2.76 in × 10.24 in) (TSAH1010) • 95 mm × 70 mm × 200 mm (3.74 in × 2.76 in × 7.87 in) (TSAH1013-1, TSAH1013-2, TSAH1013-4)
Heater Control	On at 15 °C ± 3 °C (59 °F ± 5 °F), off at 25 °C ± 3 °C (77 °F ± 5 °F) (TSAH1013-1, TSAH1013-2, TSAH1013-4)
Blower Control	On at 40 °C ± 3 °C (104 °F ± 5 °F), off at 30 °C ± 3 °C (86 °F ± 5 °F) (TSAH1013-1, TSAH1013-2, TSAH1013-4)
Operating Ambient Temperature	-40 to 60 °C (-40 °F to 140 °F)
Related Products	-
Weight	2.6 kg (5.73 lb)
Certifications	CE, FCC, RoHS
IR Wavelength	850 nm
IR Illumination Distance	50 m to 70 m (164.04 ft to 229.66 ft)
IR Beam Angle	30°
IR LEDs	42 pieces, (Ø) 8 mm LED
IR LED Lifetime	> 25,000 hours
IR Light On/Off	On when illumination is lower than 4 lux

*Design and specifications are subject to change without prior notice.

TSAH1110

IP66 Side Opening Polycarbonate Camera Housing with 30 m IR LED Illuminator

Empty IP66 camera housing, polycarbonate construction, IR illuminator with distance up to 30 m, internal usable size (W × H × L): 95 mm × 80 mm × 250 mm, built-in dual glasses



Features

- IP66, NEMA-4X enclosure rating
- Designed for indoor and outdoor applications
- Input power: 12 V DC/24 V AC/220 V AC (available)
- Built-in IR illuminator with distance up to 30 m (98.43 ft) (input power: 12 V DC)
- Built-in heater and blower (optional)
- Adjustable sliding camera tray
- Cable entry glands and mounting holes on bottom of housing
- Polycarbonate construction
- Hinged side opening for easy installation and camera setup
- Bundled internal cable managed bracket

Available Models

Model	Heater	Blower	Input Power
TSAH1110			
TSAH1113-1	+	+	12 V DC
TSAH1113-2	+	+	24 V AC
TSAH1113-4	+	+	220 V AC

Tech Specs

Model	TSAH1110
Type	Indoor/Outdoor, side opening
Protection Rating	IP66, NEMA-4X enclosure rating

Model	TSAH1110
Material	Polycarbonate
Finish	Beige
Input Power	<ul style="list-style-type: none"> • 12 V DC (TSAH1113-1) • 24 V AC (TSAH1113-2) • 220 V AC (TSAH1113-4)
Power Consumption	<ul style="list-style-type: none"> • Heater (24 V AC): 6 W (250 mA) • Heater (220 V AC): 5.3 W (23 mA) • Heater (12 V DC): 4.2 W (350 mA) • Blower: 1.68 W (140 mA) • IR LEDs: 4 W
Network Interface	-
Dimensions (W × H × L)	151 mm × 145 mm × 390 mm (5.94 in × 5.71 in × 15.35 in)
Window Viewing Area (W × H)	74 mm × 74 mm (2.91 in × 2.91 in)
Window Thickness	2 mm (0.08 in), tempered glass
Internal Usable Size (W × H × L)	<ul style="list-style-type: none"> • 95 mm × 80 mm × 250 mm (3.74 in × 3.15 in × 9.84 in) (TSAH1110, TSAH1113-1, TSAH1113-2, TSAH1113-4)
Heater Control	On at 15 °C ± 3 °C (59 °F ± 5 °F), off at 25 °C ± 3 °C (77 °F ± 5 °F) (TSAH1113-1, TSAH1113-2, TSAH1113-4)
Blower Control	On at 40 °C ± 3 °C (104 °F ± 5 °F), off at 30 °C ± 3 °C (86 °F ± 5 °F) (TSAH1113-1, TSAH1113-2, TSAH1113-4)
Operating Ambient Temperature	-20 °C to 50 °C (-4 °F to 122 °F)
Related Products	-
Weight	1.9 kg (4.19 lb)
Certifications	CE, FCC, RoHS
IR Wavelength	850 nm
IR Illumination Distance	30 m (98.43 ft)
IR Beam Angle	30°
IR LEDs	14 pieces, (Ø) 8 mm LED
IR LED Lifetime	> 25,000 hours
IR Light On/Off	On when illumination is lower than 4 lux

*Design and specifications are subject to change without prior notice.

TSAX0130

IP66 Explosion Proof Camera Housing

IP66 large size explosion proof camera housing with stainless steel 304 material



Features

- IP66, NEMA-4X enclosure rating
- Operating temperature range from -25 °C to 60 °C (-13 °F to 140 °F)
- Ex d IIC T6 Gb explosion-proof marking
- AISI 304 stainless steel construction
- Included wiper and sunshield

Tech Specs

Model	TSAX0130
Atmospheric Pressure	80 kPa to 106 kPa
Operating Ambient Temperature	-25 °C to 60 °C (-13 °F to 140 °F)
Relative Humidity	5 % to 95 % noncondensing
Protection Rating	<ul style="list-style-type: none"> • Ex d IIC T6 Gb explosion-proof marking • IP66, NEMA-4X enclosure rating
Input Power	220 V AC, 50 Hz (optional)
Dimensions (W × H × L)	420 mm × 195 mm × 194 mm (16.54 in × 7.68 in × 7.64 in)
Internal Usable Size (W × H × L)	300 mm × 80 mm × 80 mm (11.81 in × 3.15 in × 3.15 in)
Window Viewing Area (Ø)	-
Weight	11 kg (24.25 lb)
Material	AISI 304 stainless steel
Heater Control	On at 1 °C ± 3 °C (34 °F ± 5 °F) (optional)
Related Products	<ul style="list-style-type: none"> • TSAM0190: Explosion Proof Wall Housing Bracket • TSAU0400: Heavy Explosion Proof Pan and Tilt Unit

*Design and specifications are subject to change without prior notice.

TSAX0230

IP66 Explosion Proof Camera Housing

IP66 large size explosion proof camera housing with stainless steel 316L material



Features

- IP66, NEMA-4X enclosure rating
- Operating temperature range from -25 °C to 60 °C (-13 °F to 140 °F)
- Ex d IIC T6 Gb explosion-proof marking
- AISI 316L stainless steel construction
- Included wiper and sunshield

Tech Specs

Model	TSAX0230
Atmospheric Pressure	80 kPa to 106 kPa
Operating Ambient Temperature	-25 °C to 60 °C (-13 °F to 140 °F)
Relative Humidity	5 % to 95 % noncondensing
Protection Rating	<ul style="list-style-type: none"> • Ex d IIC T6 Gb explosion-proof marking • IP66, NEMA-4X enclosure rating
Input Power	220 V AC, 50 Hz (optional)
Dimensions (W × H × L)	420 mm × 195 mm × 194 mm (16.54 in × 7.68 in × 7.64 in)
Internal Usable Size (W × H × L)	300 mm × 80 mm × 80 mm (11.81 in × 3.15 in × 3.15 in)
Window Viewing Area (Ø)	-
Weight	11 kg (24.25 lb)
Material	AISI 316L stainless steel
Heater Control	On at 1 °C ± 3 °C (34 °F ± 5 °F) (optional)
Related Products	<ul style="list-style-type: none"> • TSAM0290: Explosion Proof Wall Housing Bracket • TSAU0500: Heavy Explosion Proof Pan and Tilt Unit

*Design and specifications are subject to change without prior notice.

TSAX0330

IP66 Explosion Proof Camera Housing

IP66 small size explosion proof camera housing with stainless steel 304 material



Features

- IP66, NEMA-4X enclosure rating
- Operating temperature range from -25 °C to 60 °C (-13 °F to 140 °F)
- Ex d IIC T6 Gb explosion-proof marking
- AISI 304 stainless steel construction
- Included wiper and sunshield

Tech Specs

Model	TSAX0330
Atmospheric Pressure	80 kPa to 106 kPa
Operating Ambient Temperature	-25 °C to 60 °C (-13 °F to 140 °F)
Relative Humidity	5 % to 95 % noncondensing
Protection Rating	<ul style="list-style-type: none"> • Ex d IIC T6 Gb explosion-proof marking • IP66, NEMA-4X enclosure rating
Input Power	220 V AC, 50 Hz (optional)
Dimensions (W × H × L)	365.5 mm × 163 mm × 169.5 mm (14.39 in × 6.42 in × 6.67 in)
Internal Usable Size (W × H × L)	260 mm × 80 mm × 80 mm (10.24 in × 3.15 in × 3.15 in)
Window Viewing Area (Ø)	-
Weight	6 kg (13.23 lb)
Material	AISI 304 stainless steel
Heater Control	On at 1 °C ± 3 °C (34 °F ± 5 °F) (optional)
Related Products	<ul style="list-style-type: none"> • TSAM0190: Explosion Proof Wall Housing Bracket • TSAU0400: Heavy Explosion Proof Pan and Tilt Unit

*Design and specifications are subject to change without prior notice.

TSAX0430

IP66 Explosion Proof Camera Housing

IP66 small size explosion proof camera housing with stainless steel 316L material



Features

- IP66, NEMA-4X enclosure rating
- Operating temperature range from -25 °C to 60 °C (-13 °F to 140 °F)
- Ex d IIC T6 Gb explosion-proof marking
- AISI 316L stainless steel construction
- Included wiper and sunshield

Tech Specs

Model	TSAX0430
Atmospheric Pressure	80 kPa to 106 kPa
Operating Ambient Temperature	-25 °C to 60 °C (-13 °F to 140 °F)
Relative Humidity	5 % to 95 % noncondensing
Protection Rating	<ul style="list-style-type: none"> • Ex d IIC T6 Gb explosion-proof marking • IP66, NEMA-4X enclosure rating
Input Power	220 V AC, 50 Hz (optional)
Dimensions (W × H × L)	365.5 mm × 163 mm × 169.5 mm (14.39 in × 6.42 in × 6.67 in)
Internal Usable Size (W × H × L)	260 mm × 80 mm × 80 mm (10.24 in × 3.15 in × 3.15 in)
Window Viewing Area (Ø)	-
Weight	6 kg (13.23 lb)
Material	AISI 316L stainless steel
Heater Control	On at 1 °C ± 3 °C (34 °F ± 5 °F) (optional)
Related Products	<ul style="list-style-type: none"> • TSAM0290: Explosion Proof Wall Housing Bracket • TSAU0500: Heavy Explosion Proof Pan and Tilt Unit

*Design and specifications are subject to change without prior notice.

TSAX0530

IP68 Explosion Proof Camera Housing

IP68 small size explosion proof camera housing with stainless steel 304 material



Features

- IP68, NEMA-6P enclosure rating
- Operating temperature range from -25 °C to 60 °C (-13 °F to 140 °F)
- Ex d IIB T6 Gb explosion-proof marking
- AISI 304 stainless steel construction

Tech Specs

Model	TSAX0530
Atmospheric Pressure	80 kPa to 106 kPa
Operating Ambient Temperature	-25 °C to 60 °C (-13 °F to 140 °F)
Relative Humidity	5 % to 95 % noncondensing
Protection Rating	<ul style="list-style-type: none"> • Ex d IIB T6 Gb explosion-proof marking • IP68, NEMA-6P enclosure rating
Input Power	220 V AC, 50 Hz (optional)
Dimensions (W × H × L)	365.5 mm × 163 mm × 169.5 mm (14.39 in × 6.42 in × 6.67 in)
Internal Usable Size (W × H × L)	260 mm × 80 mm × 80 mm (10.24 in × 3.15 in × 3.15 in)
Window Viewing Area (Ø)	79 mm (3.11 in)
Weight	5.5 kg (12.13 lb)
Material	AISI 304 stainless steel
Heater Control	On at 1 °C ± 3 °C (34 °F ± 5 °F) (optional)
Related Products	<ul style="list-style-type: none"> • TSAM0190: Explosion Proof Wall Housing Bracket • TSAU0400: Heavy Explosion Proof Pan and Tilt Unit

*Design and specifications are subject to change without prior notice.

TSAX0630

IP68 Explosion Proof Camera Housing

IP68 small size explosion proof camera housing with stainless steel 316L material



Features

- IP68, NEMA-6P enclosure rating
- Operating temperature range from -25 °C to 60 °C (-13 °F to 140 °F)
- Ex d IIB T6 Gb explosion-proof marking
- AISI 316L stainless steel construction

Tech Specs

Model	TSAX0630
Atmospheric Pressure	80 kPa to 106 kPa
Operating Ambient Temperature	-25 °C to 60 °C (-13 °F to 140 °F)
Relative Humidity	5 % to 95 % noncondensing
Protection Rating	<ul style="list-style-type: none"> • Ex d IIB T6 Gb explosion-proof marking • IP68, NEMA-6P enclosure rating
Input Power	220 V AC, 50 Hz (optional)
Dimensions (W × H × L)	365.5 mm × 163 mm × 169.5 mm (14.39 in × 6.42 in × 6.67 in)
Internal Usable Size (W × H × L)	260 mm × 80 mm × 80 mm (10.24 in × 3.15 in × 3.15 in)
Window Viewing Area (Ø)	79 mm (3.11 in)
Weight	5.5 kg (12.13 lb)
Material	AISI 316L stainless steel
Heater Control	On at 1 °C ± 3 °C (34 °F ± 5 °F) (optional)
Related Products	<ul style="list-style-type: none"> • TSAM0290: Explosion Proof Wall Housing Bracket • TSAU0500: Heavy Explosion Proof Pan and Tilt Unit

*Design and specifications are subject to change without prior notice.

TSAX0740

IP68 Explosion Proof Dome Camera Housing

IP68 explosion proof dome camera housing with stainless steel 304 material



Features

- IP68, NEMA-6P enclosure rating
- Operating temperature range from -25 °C to 60 °C (-13 °F to 140 °F)
- Ex d IIC T6 Gb explosion-proof marking
- AISI 304 stainless steel construction

Tech Specs

Model	TSAX0740
Atmospheric Pressure	80 kPa to 106 kPa
Operating Ambient Temperature	-25 °C to 60 °C (-13 °F to 140 °F)
Relative Humidity	5 % to 95 % noncondensing
Protection Rating	<ul style="list-style-type: none"> • Ex d IIC T6 Gb explosion-proof marking • IP68, NEMA-6P enclosure rating
Input Power	220 V AC, 50 Hz (optional)
Dimensions (Ø × H)	204 mm × 446 mm (8.03 in × 17.56 in)
Internal Usable Size (W × H × L)	-
Window Viewing Area (Ø)	-
Weight	12 kg (26.45 lb)
Material	AISI 304 stainless steel
Heater Control	On at 1 °C ± 3 °C (34 °F ± 5 °F) (optional)
Related Products	-

*Design and specifications are subject to change without prior notice.

TSAX0840

IP68 Explosion Proof Dome Camera Housing

IP68 explosion proof dome camera housing with stainless steel 316L material



Features

- IP68, NEMA-6P enclosure rating
- Operating temperature range from -25 °C to 60 °C (-13 °F to 140 °F)
- Ex d IIC T6 Gb explosion-proof marking
- AISI 316L stainless steel construction

Tech Specs

Model	TSAX0840
Atmospheric Pressure	80 kPa to 106 kPa
Operating Ambient Temperature	-25 °C to 60 °C (-13 °F to 140 °F)
Relative Humidity	5 % to 95 % noncondensing
Protection Rating	<ul style="list-style-type: none"> • Ex d IIC T6 Gb explosion-proof marking • IP68, NEMA-6P enclosure rating
Input Power	220 V AC, 50 Hz (optional)
Dimensions (Ø × H)	204 mm × 446 mm (8.03 in × 17.56 in)
Internal Usable Size (W × H × L)	-
Window Viewing Area (Ø)	-
Weight	12 kg (26.45 lb)
Material	AISI 316L stainless steel
Heater Control	On at 1 °C ± 3 °C (34 °F ± 5 °F) (optional)
Related Products	-

*Design and specifications are subject to change without prior notice.

TSAD0200

IP68 IR Bullet Type Dummy Camera

IP68 IR bullet type dummy camera



Model	TSAD0200
Related Products	-
Weight	1.35 kg (2.98 lb)
Certifications	CE, FCC, RoHS

*Design and specifications are subject to change without prior notice.

Features

- IP68, NEMA-6P enclosure rating
- Die-cast aluminum construction
- Bundled quick installation and internal cable managed bullet type housing bracket

Tech Specs

Model	TSAD0200
Type	Indoor/Outdoor, side-opening, bullet type
Protection Rating	IP68, NEMA-6P enclosure rating
Material	Die-cast aluminum
Finish	Silver/Black polyester powder coat
Input Power	-
Power Consumption	-
Network Interface	-
Dimensions (W × H × L)	100 mm × 110 mm × 300 mm (3.94 in × 4.33 in × 11.81 in)
Window Viewing Area (Ø)	45 mm (1.77 in), internal ring
Internal Usable Size (W × H × L)	80 mm × 80 mm × 190 mm (3.15 in × 3.15 in × 7.48 in)
Heater Control	-
Blower Control	-
Operating Ambient Temperature	-
Window Thickness	2 mm (0.08 in), dual tempered glasses

TSAD0600

IP66 Dome Type Dummy Camera

IP66 dome type dummy camera



Features

- IP66, NEMA-4X enclosure rating
- Die-cast aluminum construction

Tech Specs

Model	TSAD0600
Type	Indoor/Outdoor, dome type
Protection Rating	IP66, NEMA-4X enclosure rating
Material	Die-cast aluminum
Finish	Silver polyester powder coat
Input Power	-
Power Consumption	-
Network Interface	-
Dimensions (Ø × H)	142 mm × 84 mm (5.59 in × 3.31 in)
Window Viewing Area (Ø)	-
Internal Usable Size (Ø × H)	-
Heater Control	-
Blower Control	-
Operating Ambient Temperature	-
Bubble	2 mm (0.08 in), tempered glass
Related Products	TSAM0140: L Type Bracket for Dome
Weight	0.45 kg (0.99 lb)
Certifications	CE, FCC, RoHS

*Design and specifications are subject to change without prior notice.

TSAH0150

IP68 IR Bullet Type Side Opening Camera Module Housing

IP68 IR bullet type side opening camera module housing



Model	TSAH0150
Heater Control	-
Blower Control	-
Operating Ambient Temperature	-50 to 60 °C
Related Products	-
Weight	1.35 kg (2.98 lb)
Certifications	CE, FCC, RoHS
IR Wavelength	850 nm
IR Illumination Distance	30 m (98.42 ft)
IR Beam Angle	50°
IR LEDs	18 pieces
IR LED Lifetime	20,000 hours
IR Light On/Off	On when illumination is lower than 4 lux

*Design and specifications are subject to change without prior notice.

Features

- IP68, NEMA-6P enclosure rating
- Designed for indoor and outdoor applications
- Input power: 12 V DC/24 V AC/220 V AC (available)
- Built-in heater and blower (optional)
- Built-in IR illuminator with distance up to 30 m (98.42 ft) (input power: 12 V DC)
- Die-cast aluminum construction
- Hinged side opening for easy installation and camera setup
- Bundled quick installation and internal cable managed bullet type housing bracket

Tech Specs

Model	TSAH0150
Type	Indoor/Outdoor, side opening, bullet type
Protection Rating	IP68, NEMA-6P enclosure rating
Material	Die-cast aluminum
Finish	Silver/Black polyester powder coat
Input Power	12 V DC/24 V AC/220 V AC (available)
Power Consumption	-
Network Interface	-
Dimensions (W × H × L)	100 mm × 110 mm × 300 mm (3.94 in × 4.33 in × 11.81 in)
Window Viewing Area (Ø)	45 mm (1.77 in), internal ring
Window thickness	2 mm (0.08 in), dual tempered glasses
Internal Usable Size (W × H × L)	80 mm × 80 mm × 190 mm (3.15 in × 3.15 in × 7.48 in)

TSAH0350

IP66 Dome Type Camera Module Housing

IP66 dome type camera module housing



Features

- IP66, NEMA-4X enclosure rating
- Designed for indoor and outdoor applications
- Input power: 12 V DC/24 V AC/220 V AC (available)
- Built-in heater and blower (optional)
- Die-cast aluminum construction

Tech Specs

Model	TSAH0350
Type	Indoor/Outdoor, dome type
Protection Rating	IP66, NEMA-4X enclosure rating
Material	Die-cast aluminum
Finish	Silver
Input Power	12 V DC/24 V AC/220 V AC (available)
Power Consumption	-
Network Interface	-
Dimensions (Ø × H)	142 mm × 84 mm (5.59 in × 3.01 in)
Window Viewing Area (Ø)	-
Internal Usable Size (Ø × H)	42 mm × 42 mm (1.65 in × 1.65 in) to 28 mm × 28 mm (1.10 in × 1.10 in)
Heater Control	-
Blower Control	-
Operating Ambient Temperature	-40 °C to 50 °C (-40 °F to 122 °F)
Bubble	2 mm (0.08 in), tempered glass
Related Products	<ul style="list-style-type: none"> • TSAM0140: L Type Bracket for Dome
Weight	0.45 kg (0.99 lb)
Certifications	CE, FCC, RoHS

*Design and specifications are subject to change without prior notice.

TSAU0200

Outdoor Pan and Tilt Unit

Outdoor pan and tilt unit with maximum load of 7 kg



Model	TSAU0200
Communication Speed	2400
Dimensions (W × H × L)	179 mm × 115 mm × 180 mm (7.0 in × 4.5 in × 7.1 in)
Weight	1.58 kg (3.5 lb)

*Design and specifications are subject to change without prior notice.

Features

- Polycarbonate and steel construction
- Maximum load 7 kg (15.42 lb)
- Designed for indoor and outdoor applications

Tech Specs

Model	TSAU0200
Maximum Load	7 kg (15.42 lb)
Material	Polycarbonate and steel construction
Finish	Beige
Input Power	24 V AC
Pan Range (Movement in Horizontal Plane)	0° to 355°
Pan Speed	6° per second
Tilt Range (Movement in Vertical Plane)	-50° to 40°
Tilt Speed	-
Atmospheric Pressure	-
Operating Ambient Temperature	-10 °C to 45 °C (14 °F to 113 °F)
Relative Humidity	5 % to 95 % noncondensing
Protection Rating	-
Communication Way	RS-485
Communications Protocols	Pelco-D

TSAU0300

Indoor Pan and Tilt Unit

Indoor pan and tilt motor with maximum load of 7 kg



Model	TSAU0300
Communication Speed	-
Dimensions (Ø × H)	117 mm × 118 mm (4.6 in × 4.6 in)
Weight	9.4 kg (20.7 lb)

*Design and specifications are subject to change without prior notice.

Features

- Polycarbonate construction
- Maximum load 7 kg (15.42 lb)
- Designed for indoor applications

Tech Specs

Model	TSAU0300
Maximum Load	7 kg (15.42 lb)
Material	Polycarbonate
Finish	Beige
Input Power	-
Pan Range (Movement in Horizontal Plane)	0° to 350°
Pan Speed	6° per second
Tilt Range (Movement in Vertical Plane)	-50° to 40°
Tilt Speed	-
Atmospheric Pressure	-
Operating Ambient Temperature	-10 °C to 45 °C (14 °F to 113 °F)
Relative Humidity	5 % to 95 % noncondensing
Protection Rating	-
Communication Way	-
Communications Protocols	-

TSAU0400

Heavy Explosion Proof Pan and Tilt Unit

IP68 heavy explosion proof pan and tilt unit with stainless steel 304L material



Model	TSAU0400
Communications Protocols	Pelco-D, Pelco-P, according to customer request
Communication Speed	2400, 4800, 9600, 19200 adjustable
Dimensions (W × H × L)	366 mm × 233 mm × 372 mm (14.4 in × 9.2 in × 14.6 in)
Weight	20 kg (44.1 lb)

*Design and specifications are subject to change without prior notice.

Features

- IP68, NEMA-6P enclosure rating
- AISI 304 stainless steel construction
- Ex d IIC T6 Gb explosion proof marking
- Maximum load 27 kg (59.52 lb)

Tech Specs

Model	TSAU0400
Maximum Load	27 kg (59.52 lb)
Material	AISI 304 stainless steel
Finish	Silver
Input Power	220 V AC, 50 Hz
Pan Range (Movement in Horizontal Plane)	0° to 360°
Pan Speed	6° per second
Tilt Range (Movement in Vertical Plane)	-90° to 60°
Tilt Speed	6° per second
Atmospheric Pressure	80 kPa to 106 kPa
Operating Ambient Temperature	-25 °C to 60 °C (-13 °F to 140 °F)
Relative Humidity	5 % to 95 % noncondensing
Protection Rating	<ul style="list-style-type: none"> • Ex d IIC T6 Gb explosion-proof marking • IP68, NEMA-6P enclosure rating
Communication Way	RS-485 half-duplex

TSAU0500

Heavy Explosion Proof Pan and Tilt Unit

IP68 heavy explosion proof pan and tilt unit with stainless steel 316L material



Model	TSAU0500
Communications Protocols	Pelco-D, Pelco-P, according to customer request
Communication Speed	2400, 4800, 9600, 19200 adjustable
Dimensions (W × H × L)	366 mm × 233 mm × 372 mm (14.4 in × 9.2 in × 14.6 in)
Weight	20 kg (44.1 lb)

*Design and specifications are subject to change without prior notice.

Features

- IP68, NEMA-6P enclosure rating
- AISI 316L stainless steel construction
- Ex d IIC T6 Gb explosion proof marking
- Maximum load 27 kg (59.52 lb)

Tech Specs

Model	TSAU0500
Maximum Load	27 kg (59.52 lb)
Material	AISI 316L stainless steel
Finish	Silver
Input Power	220 V AC, 50 Hz
Pan Range (Movement in Horizontal Plane)	0° to 360°
Pan Speed	6° per second
Tilt Range (Movement in Vertical Plane)	-90° to 60°
Tilt Speed	6° per second
Atmospheric Pressure	80 kPa to 106 kPa
Operating Ambient Temperature	-25 °C to 60 °C (-13 °F to 140 °F)
Relative Humidity	5 % to 95 % noncondensing
Protection Rating	<ul style="list-style-type: none"> • Ex d IIC T6 Gb explosion-proof marking • IP68, NEMA-6P enclosure rating
Communication Way	RS-485 half-duplex

TSAM0130

Aluminum Box Camera Bracket

9 cm metal box camera bracket



Tech Specs

Model	TSAM0130
Maximum Load	3 kg (6.61 lb)
Material	Die-cast aluminum
Finish	Silver polyester powder coat
Dimensions (H × Ø)	90 mm × 56.8 mm (3.54 in × 2.24 in)
Weight	0.13 kg (0.29 lb)
Related Products	-

*Design and specifications are subject to change without prior notice.

TSAM0230

Aluminum Box Camera Bracket

13 cm metal box camera bracket



Tech Specs

Model	TSAM0230
Maximum Load	5 kg (11.02 lb)
Material	Die-cast aluminum
Finish	Silver polyester powder coat
Dimensions (H × Ø)	130 mm × 56.8 mm (5.12 in × 2.24 in)
Weight	0.15 kg (0.33 lb)
Related Products	-

*Design and specifications are subject to change without prior notice.

TSAM0530

Box Camera Bracket

11.5 cm box camera bracket



Tech Specs

Model	TSAM0530
Maximum Load	1.5 kg (3.31 lb)
Material	Aluminum and plastic
Finish	Beige polyester powder coat
Dimensions (H × Ø)	115 mm × 45.8 mm (4.53 in × 1.80 in)
Weight	0.1 kg (0.22 lb)
Related Products	-

*Design and specifications are subject to change without prior notice.

TSAM0630

Aluminum Box Camera Bracket

17 cm metal box camera bracket



Tech Specs

Model	TSAM0630
Maximum Load	7 kg (15.43 lb)
Material	Die-cast aluminum
Finish	Silver polyester powder coat
Dimensions (H × Ø)	170 mm × 90 mm (6.69 in × 3.54 in)
Weight	0.4 kg (0.88 lb)
Related Products	-

*Design and specifications are subject to change without prior notice.

TSAM0730

Box Camera Bracket

17 cm box camera bracket



Tech Specs

Model	TSAM0730
Maximum Load	1.5 kg (3.31 lb)
Material	Die-cast aluminum
Finish	White polyester powder coat
Dimensions (H × Ø)	170 mm × 57 mm (6.69 in × 2.24 in)
Weight	0.15 kg (0.33 lb)
Related Products	-

*Design and specifications are subject to change without prior notice.

TSAM0830

Aluminum Box Camera Bracket

17 cm metal box camera bracket



Tech Specs

Model	TSAM0830
Maximum Load	1.5 kg (3.31 lb)
Material	Die-cast aluminum
Finish	Beige polyester powder coat
Dimensions (H × Ø)	170 mm × 45 mm (6.69 in × 1.77 in)
Weight	0.081 kg (0.18 lb)
Related Products	-

*Design and specifications are subject to change without prior notice.

TSAM0175

Quick Installation and Internal Cable Managed Bullet Type Housing Bracket

Bullet type housing bracket for TSAH0150



Tech Specs

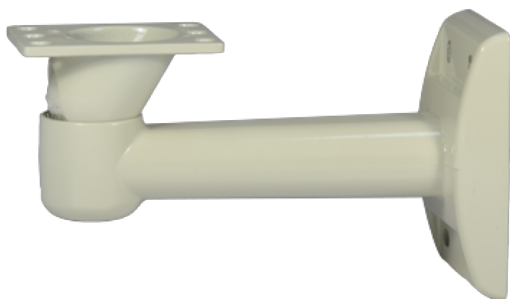
Model	TSAM0175
Maximum Load	20 kg (44.09 lb)
Material	Die-cast aluminum
Finish	Silver/Black polyester powder coat
Dimensions (W × H × L)	200 mm × 127 mm
Weight	0.68 kg (1.50 lb)
Related Products	<ul style="list-style-type: none"> TSAH0150: IP68 IR Bullet Type Side Open Camera Module Housing

*Design and specifications are subject to change without prior notice.

TSAM0265

Internal Cable Managed Wall Housing Bracket

Housing bracket for TSAH0430, TSAH0530, TSAH0830, TSAH0510, TSAH0610, TSAH0710, TSAH0810



Tech Specs

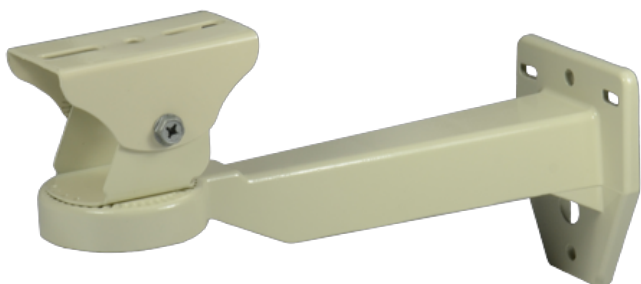
Model	TSAM0265
Maximum Load	10 kg (22.05 lb)
Material	Die-cast aluminum
Finish	Beige polyester powder coat
Dimensions (W × H × L)	208 mm × 75 mm × 115 mm (8.19 in × 2.95 in × 4.53 in)
Weight	0.68 kg (1.50 lb)
Related Products	<ul style="list-style-type: none"> • TSAH0430: IP66 Side Open Polycarbonate Camera Housing • TSAH0530: IP66/67 Die-cast Side Open Camera Housing • TSAH0830: IP66 Extruded Side Open Camera Housing • TSAH0510: IP66 Side Open Camera Housing with 20 m Bucket IR LED Illuminator • TSAH0610: IP66 Side Open Camera Housing with 30 m Bucket IR LED Illuminator • TSAH0710: IP66 Side Open Camera Housing with 50 m Bucket IR LED Illuminator • TSAH0810: IP66 Side Open Camera Housing with 70 m Bucket IR LED Illuminator

*Design and specifications are subject to change without prior notice.

TSAM0380

Wall Housing Bracket

Bracket for TSAH0330, TSAH0730, TSAH0930, TSAH0310, TSAH0410



Tech Specs

Model	TSAM0380
Maximum Load	5 kg (11.02 lb)
Material	Die-cast aluminum
Finish	Beige polyester powder coat
Dimensions (W × H × L)	83 mm × 145 mm × 255 mm (3.27 in × 5.71 in × 10.04 in)
Weight	0.55 kg (0.88 lb)
Related Products	-

*Design and specifications are subject to change without prior notice.

TSAM0165

Cable and Adaptor Managed Wall Housing Bracket

Power cord and adaptor management bracket for TSAH0630, TSAH0110, TSAH0210



Tech Specs

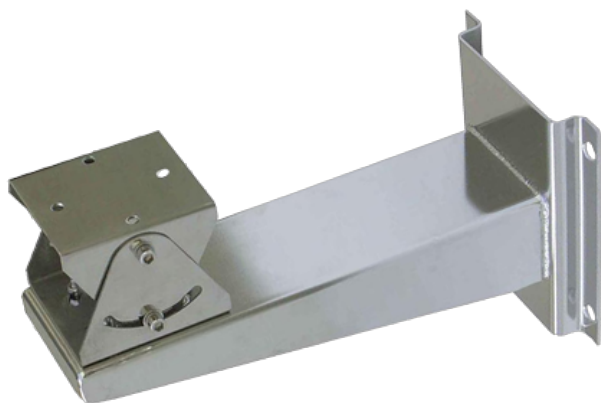
Model	TSAM0165
Maximum Load	30 kg (66.14 lb)
Material	Die-cast aluminum
Finish	White polyester powder coat
Dimensions (W × H × L)	278 mm × 138 mm × 210 mm (10.94 in × 5.43 in × 8.28 in)
Weight	1.8 kg (3.97 lb)
Note	<ul style="list-style-type: none"> • TSAH0630: IP68 Die-casting Side Open Camera Housing • TSAH0110: IP68 Side Open Camera Housing with 80 m IR LED Illuminator • TSAH0210: IP68 Side Open Camera Housing with 50 m to 70 m IR LED Illuminator

*Design and specifications are subject to change without prior notice.

TSAM0190

Explosion Proof Wall Housing Bracket

Explosion proof bracket with stainless steel 304 material for TSAX0130, TSAX0330, TSAX0530



Tech Specs

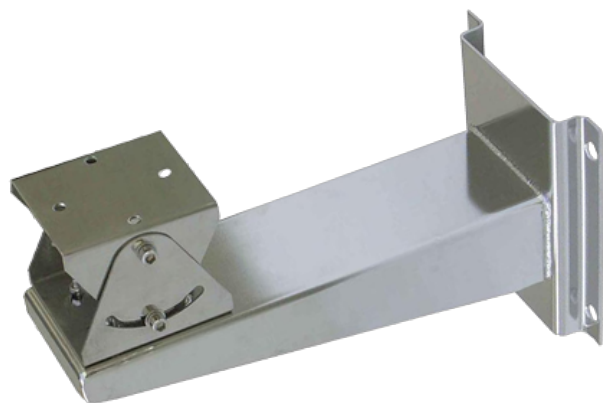
Model	TSAM0190
Maximum Load	60 kg (132.28 lb)
Material	AISI 304 stainless steel
Finish	-
Dimensions (W × H × L)	295 mm × 150 mm × 130 mm (11.61 in × 5.91 in × 5.12 in)
Weight	1.8 kg (3.97 lb)
Related Products	<ul style="list-style-type: none"> • TSAX0130: IP66 Explosion Proof Camera Housing • TSAX0330: IP66 Explosion Proof Camera Housing • TSAX0530: IP68 Explosion Proof Camera Housing

*Design and specifications are subject to change without prior notice.

TSAM0290

Explosion Proof Wall Housing Bracket

Explosion proof bracket with stainless steel 316L material for TSAX0230, TSAX0430, TSAX0630



Tech Specs

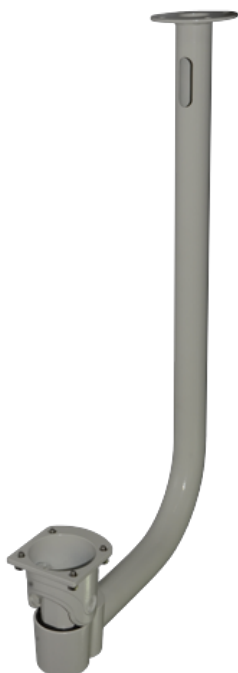
Model	TSAM0290
Maximum Load	60 kg (132.28 lb)
Material	AISI 316L stainless steel
Finish	-
Dimensions (W × H × L)	295 mm × 150 mm × 130 mm (11.61 in × 5.91 in × 5.12 in)
Weight	1.8 kg (3.97 lb)
Related Products	<ul style="list-style-type: none"> • TSAX0230: IP66 Explosion Proof Camera Housing • TSAX0430: IP66 Explosion Proof Camera Housing • TSAX0630: IP68 Explosion Proof Camera Housing

*Design and specifications are subject to change without prior notice.

TSAM0187

Cable Managed Pendant Mount Bracket

Pendant mount bracket for TSAH0630, TSAH0210, TSAH0110



Tech Specs

Model	TSAM0187
Maximum Load	20 kg (44.09 lb)
Material	Die-cast aluminum
Finish	White polyester powder coat
Dimensions (W × H × L)	360 mm × 610 mm × 90 mm (14.17 in × 24.01 in × 3.54 in)
Weight	0.7 kg (5.29 lb)
Related Products	-

*Design and specifications are subject to change without prior notice.

TSAM0286

Pendant Mount Bracket

Pendant mount bracket for TSAH0330, TSAH0430, TSAH0530, TSAH0830, TSAH0930, TSAH1330, TSAH0510, TSAH0610, TSAH0710, TSAH0810



Tech Specs

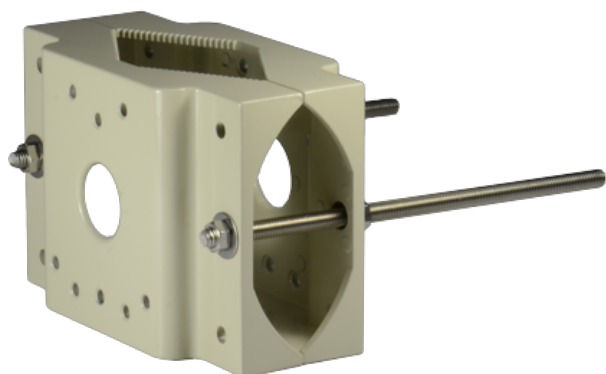
Model	TSAM0286
Maximum Load	10 kg (22.05 lb)
Material	Steel
Finish	Beige polyester powder coat
Dimensions (W × H × L)	350 mm × 230 mm × 60 mm (13.78 in × 9.06 in × 2.36 in)
Weight	1.5 kg (3.31 lb)
Related Products	<ul style="list-style-type: none"> • TSAH0330: IP66 Cost Effective Camera Housing • TSAH0430: IP66 Side Opening Polycarbonate Camera Housing • TSAH0530: IP66/IP67 Side Opening Die-cast Aluminum Camera Housing • TSAH0830: IP66 Extruded Side Opening Camera Housing • TSAH0930: IP66 Cost Effective Large Camera Housing • TSAH1330: IP66/IP67 Side Opening Die-cast Aluminum Camera Housing • TSAH0510: IP66 Side Opening Camera Housing with 20 m Bucket IR LED Illuminator • TSAH0610: IP66 Side Opening Camera Housing with 30 m Bucket IR LED Illuminator • TSAH0710: IP66 Side Opening Camera Housing with 50 m Bucket IR LED Illuminator • TSAH0810: IP66 Side Opening Camera Housing with 70 m Bucket IR LED Illuminator

*Design and specifications are subject to change without prior notice.

TSAM0108

Pole Mount Bracket

Lamp pole mount bracket (2 sides)



Tech Specs

Model	TSAM0108
Maximum Load	20 kg (44.09 lb)
Material	Die-cast aluminum
Finish	Beige polyester powder coat
Dimensions (W × H × L)	90 mm to 140 mm
Weight	1.3 kg (2.87 lb)
Related Products	-

*Design and specifications are subject to change without prior notice.

TSAM0208

Pole Mount Bracket

Lamp pole mount bracket (1 side)



Tech Specs

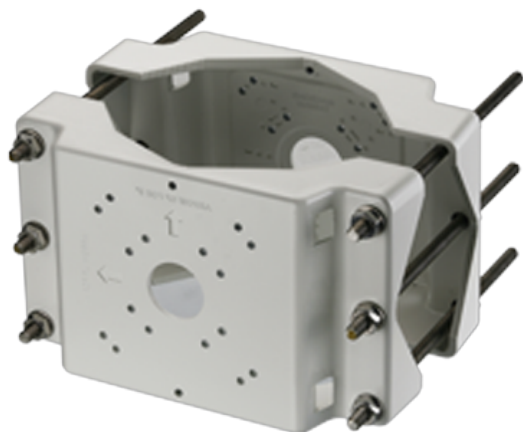
Model	TSAM0208
Maximum Load	20 kg (44.09 lb)
Material	Steel
Finish	Beige polyester powder coat
Dimensions (W × H × L)	105 mm to 145 mm (4.13 in to 5.71 in)
Weight	0.94 kg (2.07 lb)
Related Products	-

*Design and specifications are subject to change without prior notice.

TSAM0308

Pole Mount Bracket

Lamp pole mount bracket, suitable for explosion proof series (bigger size)



Tech Specs

Model	TSAM0308
Maximum Load	30 kg (66.14 lb)
Material	Die-cast aluminum
Finish	White polyester powder coat
Dimensions (W × H × L)	277 mm × 75 mm × 168 mm (10.91 in × 2.95 in × 6.61 in)
Weight	2.4 kg (5.29 lb)
Related Products	-

*Design and specifications are subject to change without prior notice.

TSAM0140

L Type Bracket for Dome

L type dome bracket for dome type camera



Tech Specs

Model	TSAM0140
Maximum Load	2 kg (4.41 lb)
Material	Die-cast aluminum
Finish	Silver polyester powder coat
Dimensions (W × H × L)	147 mm × 138 mm × 110 mm (5.79 in × 5.43 in × 4.33 in)
Weight	0.7 kg (1.54 lb)
Related Products	<ul style="list-style-type: none"> • TSAH0350: IP66 Dome Type Camera Module Housing • TSAD0600: IP66 Dome Type Dummy Camera

*Design and specifications are subject to change without prior notice.

TSAW0100-0

Housing Wiper

Housing Wiper for TSAH0330 series, 110 V AC



Model	TSAW0100
Related Products	-
Weight	0.43 kg (0.95 lb)
Certifications	CE, RoHS

*Design and specifications are subject to change without prior notice.

Features

- Easy installation on TSAH0330 housings
- Different voltages, 110 V AC, 24 V AC or 220 V AC, available

Available Models

Model	Input Power
TSAW0100-0	110 V AC
TSAW0100-2	24 V AC
TSAW0100-4	220 V AC

Tech Specs

Model	TSAW0100
Rotation Speed	5 rpm
Rotation Angle	45°
Torque	8 kgs
Finish	Beige polyester powder coat
Input Power	<ul style="list-style-type: none"> • 110 V AC (TSAW0100-0) • 24 V AC (TSAW0100-2) • 220 V AC (TSAW0100-4)
Power Consumption	<ul style="list-style-type: none"> • 3 W (TSAW0100-0) • 4 W (TSAW0100-2) • 4 W (TSAW0100-4)
Dimensions (Ø × L)	87 mm × 70 mm (3.43 in × 2.76 in), not comprehensive of blade
Blade Length	100 mm (3.94 in)
Wiper Stem Length	130 mm (5.12 in)